

Rolfe East



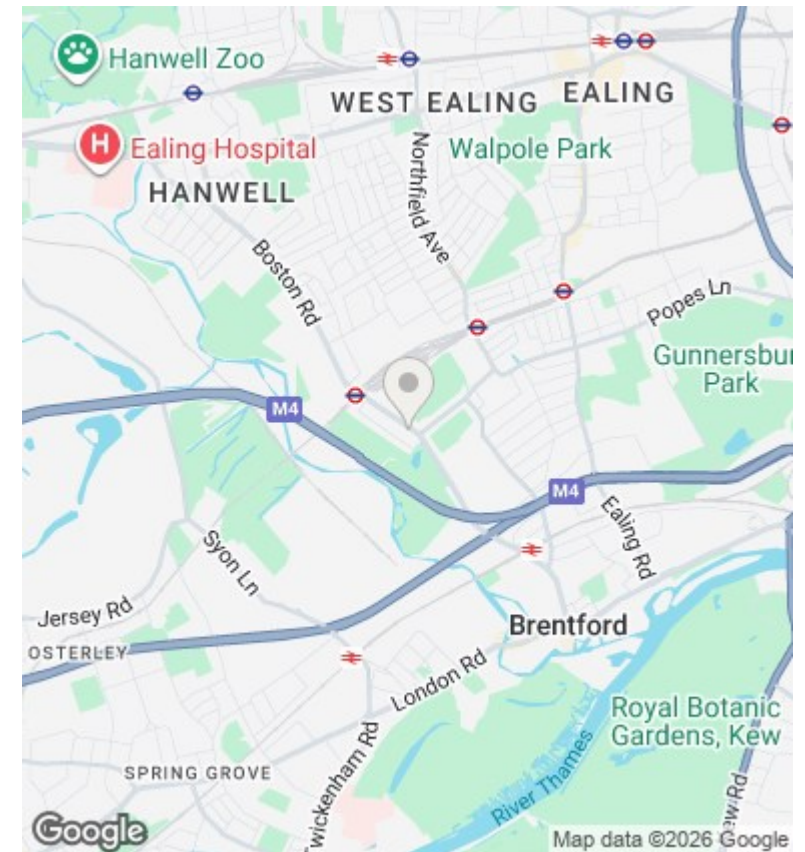
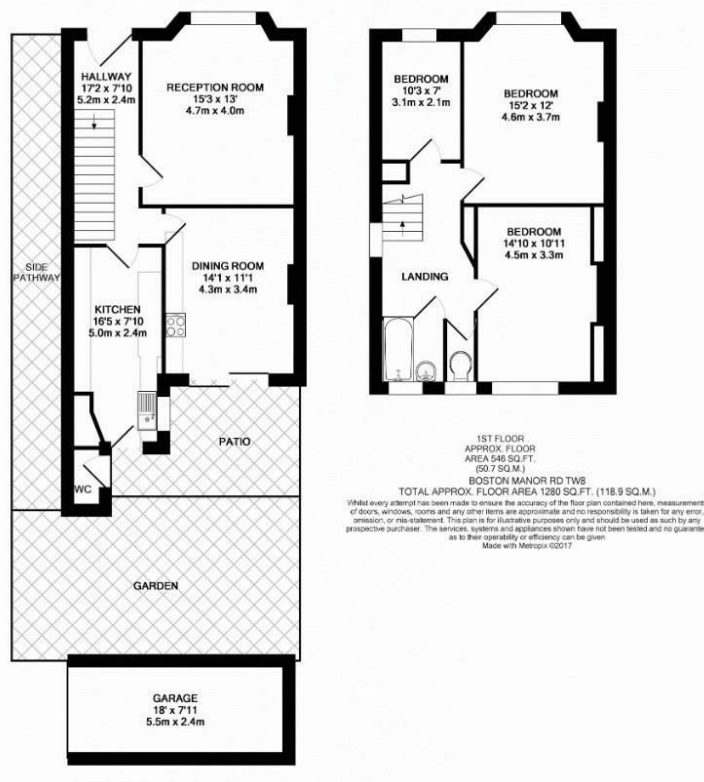
Boston Manor Road, Brentford, TW8 9LN

£760,000

- Three well proportioned bedrooms
- Potential to extend STPP
- No onward chain
- Two large reception rooms
- 0.3 of a mile from Boston Manor Station (Piccadilly Line)
- Large garage to rear
- Chain free sale
- Excellent transport links

289 Northfield Avenue, Ealing, W5 4XB
020 8579 1111

northfields@rolfe-east.com
<https://www.rolfe-east.com/>



Directions

Viewings

Viewings by arrangement only. Call 020 8579 1111 to make an appointment.

Council Tax Band

E

EPC Rating:

E

Energy Efficiency Rating		
	Current	Potential
Very energy efficient - lower running costs		
(92 plus) A		
(81-91) B		84
(69-80) C		
(55-68) D		
(39-54) E	48	
(21-38) F		
(1-20) G		
Not energy efficient - higher running costs		
England & Wales	EU Directive 2002/91/EC	