

Rolfe East



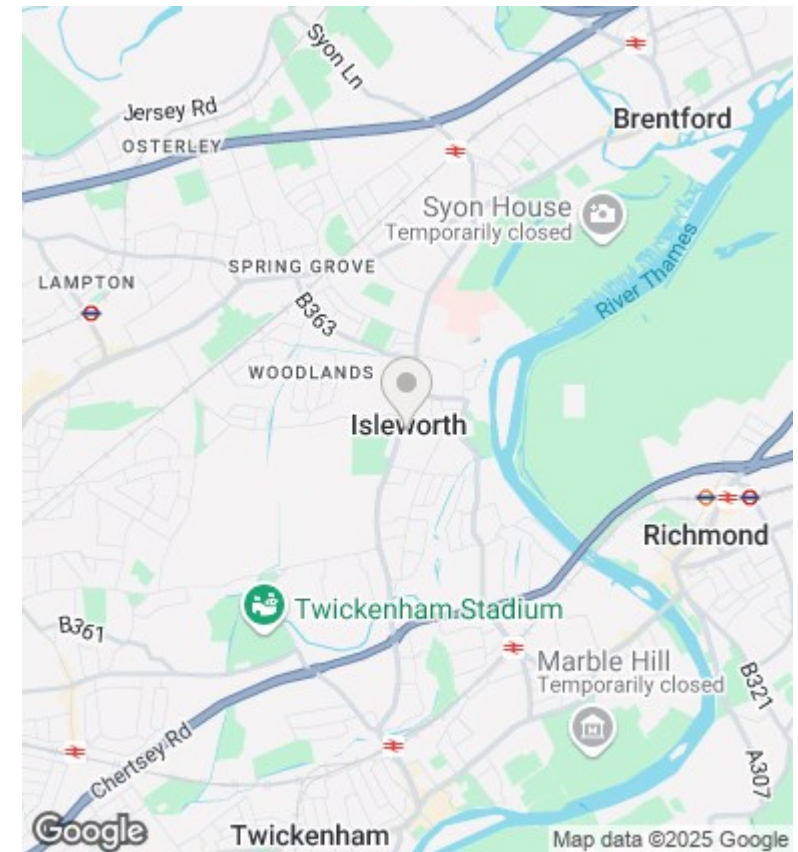
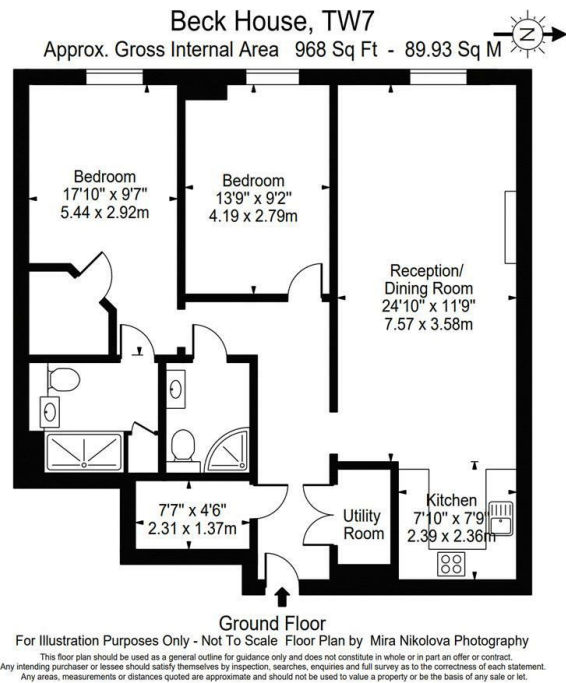
Twickenham Road, Isleworth, TW7 7DJ

£399,950

- Private gated retirement development (over 60's)
- Two double bedrooms
- Long 995 year lease
- Two Luxury bathrooms
- Almost 1000 sqft of accommodation
- Beautiful communal areas
- Attractive communal grounds
- High specification throughout

289 Northfield Avenue, Ealing, W5 4XB
020 8579 1111

northfields@rolfe-east.com
<https://www.rolfe-east.com/>



Directions

Viewings

Viewings by arrangement only. Call 020 8579 1111 to make an appointment.

Council Tax Band

E

EPC Rating:

B

Energy Efficiency Rating		
	Current	Potential
Very energy efficient - lower running costs		
(92 plus) A		
(81-91) B	87	87
(69-80) C		
(55-68) D		
(39-54) E		
(21-38) F		
(1-20) G		
Not energy efficient - higher running costs		
England & Wales	EU Directive 2002/91/EC	