



TO LET

Perry Vale, Forest Hill, SE23

£1,700 pcm

Two bedroom flat, with study
Unfurnished





Description

Hindwoods are delighted to offer to the market this well presented spacious 2 bedroom flat, with a study room, above a commercial unit.

The property boasts a bright and airy space and is situated in the heart of Forest Hill, only a-stones-throw away from Forest Hill station, approx. 0.2 miles.

Local amenities such as Wine & Food stores, restaurants, pubs, and bars are nearby. Popular parks such as the Devonshire Nature Reserve and Horniman Gardens enjoyed by Forest Hill residents are local to the property.

The accommodation comprises: -

Mezzanine Floor

Bathroom

Double glazed obscure window to rear. White bathroom suite comprising bath with shower attachment over. Pedestal wash hand basin and low-level WC. Vinyl flooring.

1st Floor

Kitchen

12'4" x 11'9" (3.75m x 3.59m)

Double glazed window to rear. Range of wall and base units with work surface to 2 walls. Inset electric oven with gas hob and extractor hood. Washing machine. Fridge freezer.

Living Room

18'0" x 11'6" (5.48m x 3.50m)

Two double glazed windows to front, double radiator, carpeted.

2nd Floor

Bedroom One

18'1" x 11'6" (5.52m x 3.50m)

Two double glazed windows to front, feature fireplace, double radiator, carpeted.

Bedroom Two

12'1" x 11'9" (3.67m x 3.59m)

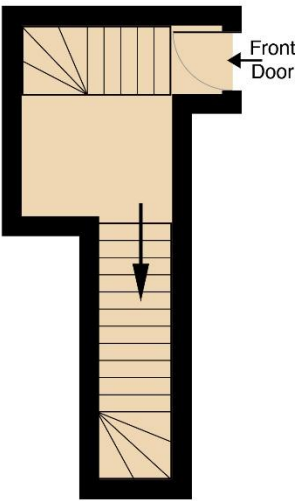
Double glazed window to front, small feature fireplace, double radiator, built in cupboard, carpeted.

Study

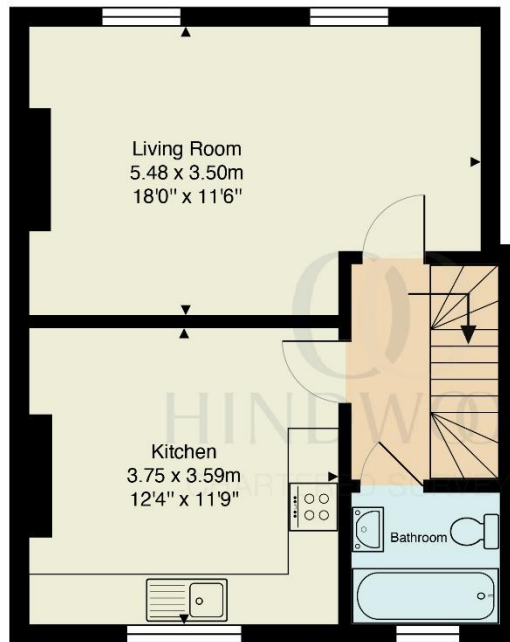
5'11" x 4'11" (1.82m x 1.51m)



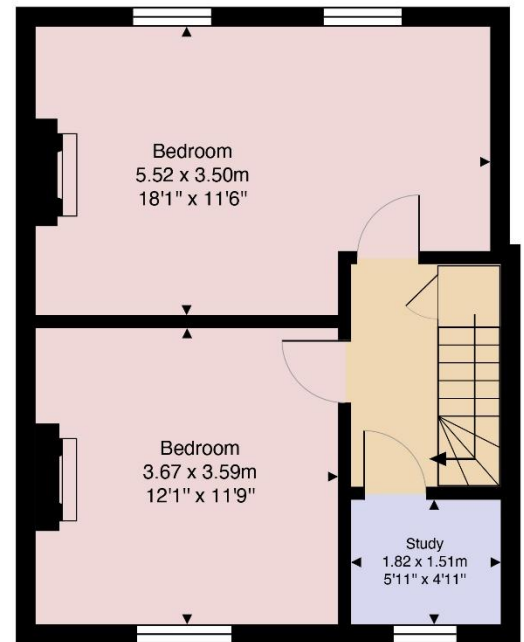
Perry Vale



Ground Floor



First Floor



Second Floor

Gross Internal Area: 88.9 m² ... 957 ft²



Disclaimer: Floor Plan measurements are approximate and are for illustrative purposes only. While we do not doubt the floor plans accuracy, we make no guarantee, warranty or representation as to the accuracy and completeness of the floor plan. You or your advisors should conduct a careful, independent investigation of the property to determine to your satisfaction as to the suitability of the property for your space requirements. Floor Plan sketched by Property Gold Marketing.

