

TO LET

**Walworth Road,
London, SE17 2AL**

3 Bedroom Flat

Unfurnished

£2,500 pcm





Description

Hindwoods are delighted to welcome to the market this newly refurbished self-contained 3-bedroom split level maisonette. Situated on the corner of Walworth Road and Merrow Street, over commercial premises. Within half a mile of Kennington Underground Station and within a mile of Elephant and Castle with its mainline and underground Stations.

The accommodation consists of the following: -

1st Floor

Living Room

19'1" x 14'8" (5.81 x 4.48m)

Sash windows, fresh painted walls, newly laid carpet double radiator.

Bedroom 1

12'7" x 12'5" (3.82 x 3.78m)

Sash windows, feature fireplace, fresh painted walls, newly laid carpet, double radiator.

Kitchen

11'8" x 10'8" (3.57 x 3.25m)

Range of wall and base units with worktop surfaces.

Stainless steel sink with chrome effect mixer tap over.

Built in oven, hob and extractor. Tiled splashback.

Fridge/freezer. Sash window, freshly painted and new flooring.

2nd Floor

Bedroom 2

19'5" x 14'8" (5.93 x 4.48m)

Windows to front, fresh painted walls, newly laid carpets,

Bedroom 3

12'9" x 12'10" (3.89 x 3.90m)

Sash windows, feature fireplace, newly laid carpet and freshly painted walls, double radiator.

Bathroom

White suite comprising of panelled bath, pedestal wash hand basin and WC. Separate walk in shower. Part tiled walls, Frosted window, double radiator.

WC

Low level W.C., Sash window



Information

Viewings

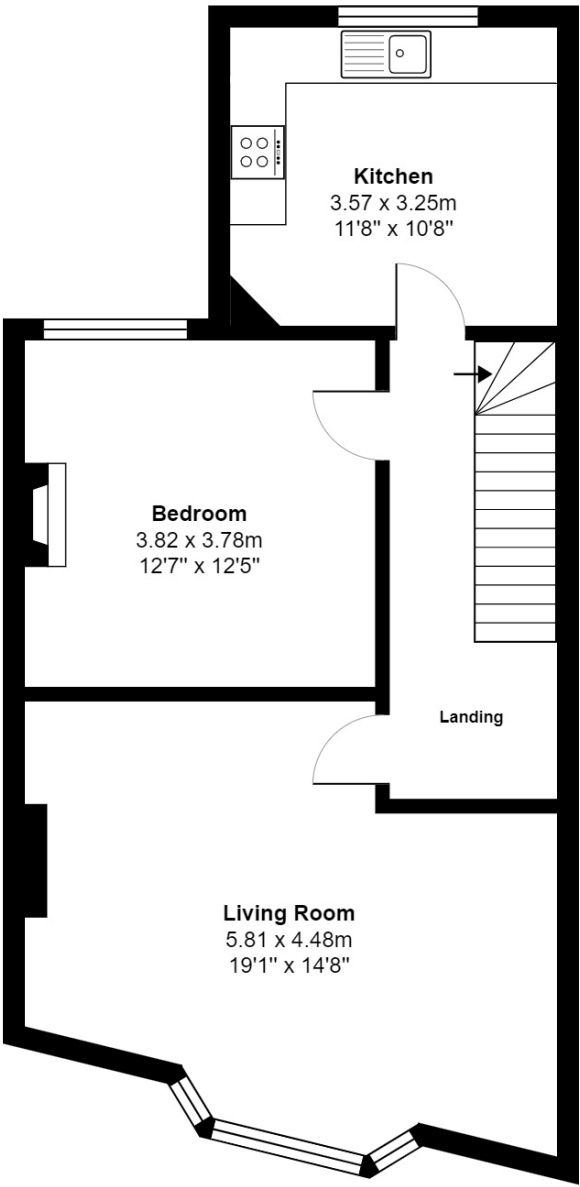
Strictly via Hindwoods.

Donna Distin

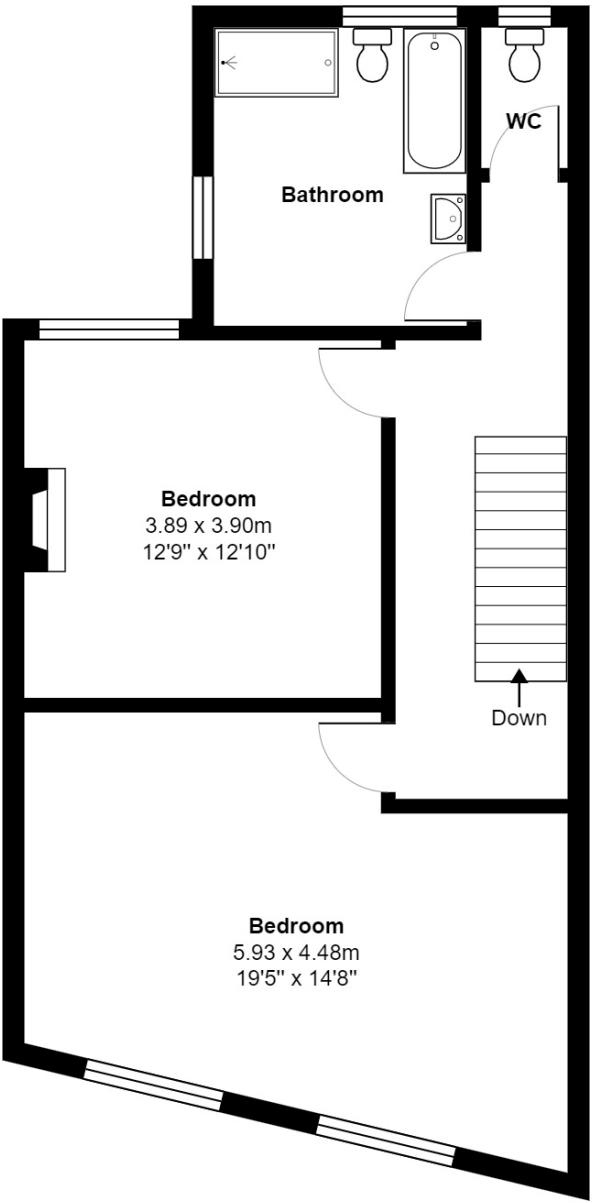
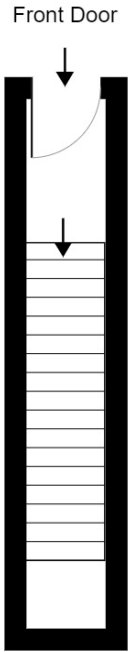
d.distin@hindwoods.co.uk



Walworth Rd



1st Floor



2nd Floor

Total Area: 123.7 m² ... 1331 ft²
All measurements are approximate and for display purposes only