

TO LET

**Thicket Road  
Anerley  
London, SE20**

**£1,450 pcm**

Refurbished 1 Bedroom Flat -  
Unfurnished





## Description

Hindwoods are delighted to welcome to the market, this well presented newly refurbished one bedroom flat. Situated off the main Anerley Road, within half a mile of Anerley, Crystal Palace and Penge West Stations.

The accommodation comprises of.

### Kitchen

5'8" x 8'11" (1.73 x 2.73m)

Range of wall and base units with stainless steel sink unit and worktop surfaces. tiled splashbacks, built in oven and hob with extractor hood over and fridge freezer. Vinyl flooring.

### Lounge

14'11" x 13'8" (4.54 x 4.17m)

Sash window to front, freshly painted walls, new carpet, radiator.

### Bedroom

9'11" x 13'9" (3.03 x 4.19m)

Sash window to rear, freshly painted walls, new carpet and double radiator.

### Bathroom

Small window to side, white suite comprising of a panelled bath with mixer tap and shower attachment. Glass shower screen, vanity wash hand basin with a mixer tap, low level W/C, part tiled walls and vinyl flooring.



## Viewings

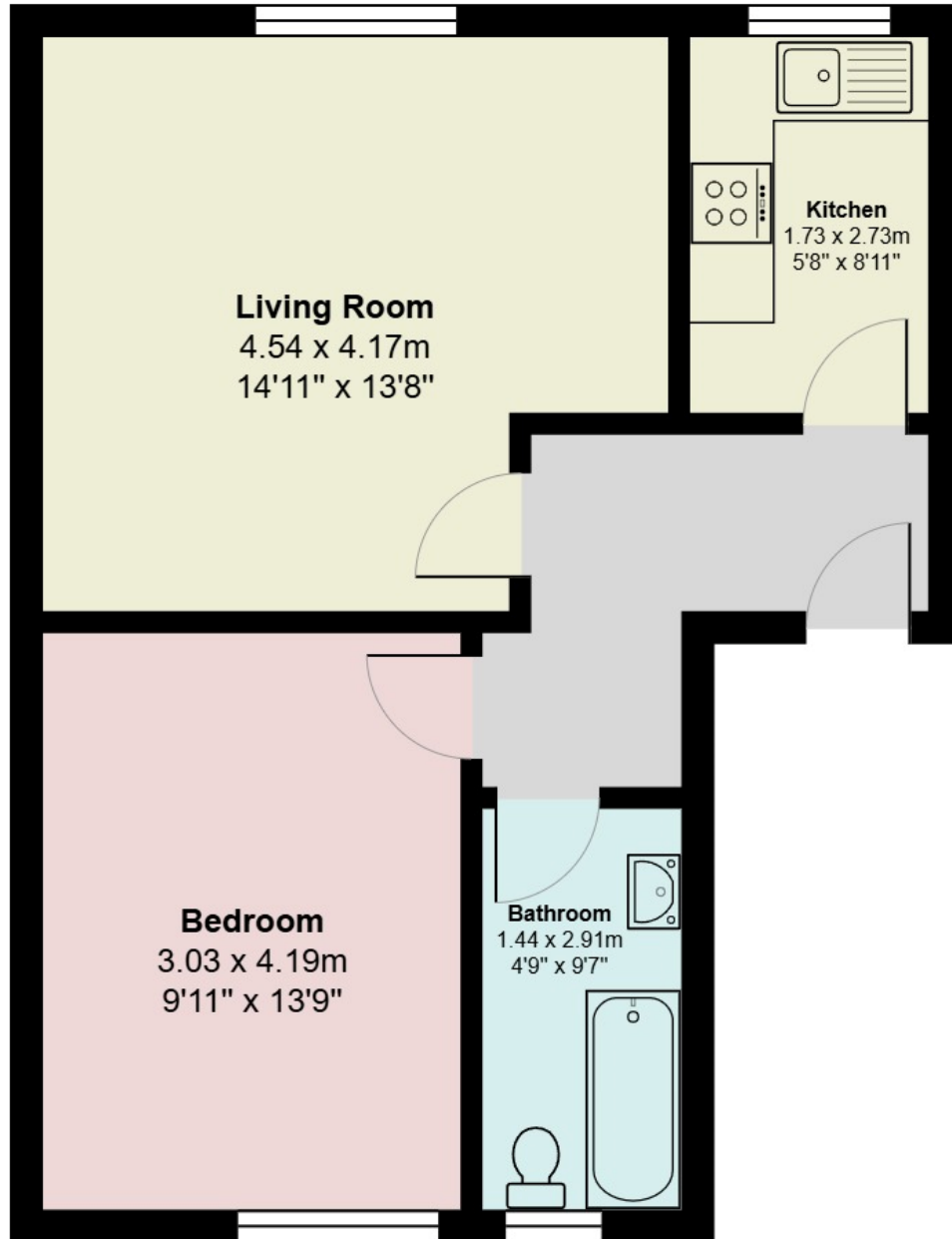
Strictly via Hindwoods.

Donna Distin

[D.distin@hindwoods.co.uk](mailto:D.distin@hindwoods.co.uk)



## Thicket Road



Total Area: 46.9 m<sup>2</sup> ... 505 ft<sup>2</sup>

All measurements are approximate and for display purposes only