



TO LET

# Perry Vale, Forest Hill London SE23 2NE

£1,900 pcm  
2 Bedroom Maisonette  
Unfurnished





## Description

Hindwoods are delighted to present to the market this beautiful split-level two-bedroom flat located in the sought-after Perry Vale area of Forest Hill.

With two spacious double bedrooms, a separate living room and a well-equipped kitchen, this property is perfect for professionals or small families looking for comfort and convenience.

The accommodation comprises:

### FIRST FLOOR

#### Living Room

18'0" X 11'6" (5.48 X 3.50m) Double glazed windows to front. Radiator. Covered fireplace. Door to hallway and stairs.

#### Kitchen

12'4" x 11'9" (3.75 X 3.59m) Range of wall and base units with inset stainless-steel sink and worktop surface. Built in oven, hob and extractor. Tiled splashback. Combi boiler. Washing machine. Fridge/Freezer. Radiator. Window.

#### Bathroom

White bathroom suite, bath with built in shower, W.C, Pedestal sink.



### SECOND FLOOR

#### Bedroom 1

18'1" X 11'6" (5.52 X 3.50m) Double glazed windows to front. Radiator. Feature fireplace.

#### Bedroom 2

12'1" X 11'9" (3.67 X 3.59m) Double glazed window to rear. Radiator. Feature fireplace.

#### Box Room/ Study

5'11" X 4'11" (1.82 X 1.51m) Double glazed window to rear. Radiator.



## Viewings

For further information please contact:  
Hindwoods 0208 858 9303

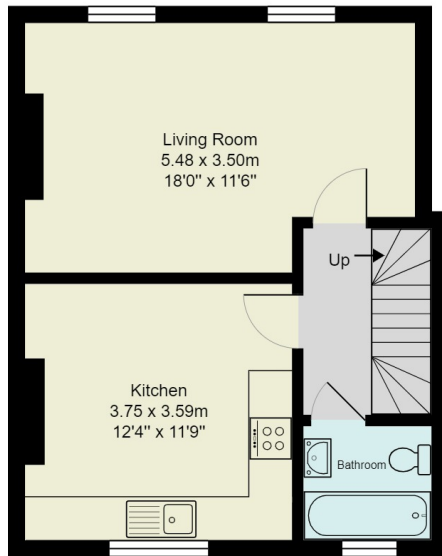
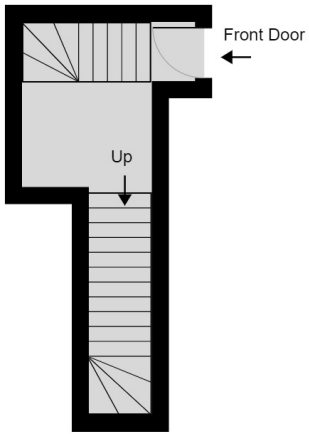


Louis Manzi  
[L.Manzi@hindwoods.co.uk](mailto:L.Manzi@hindwoods.co.uk)

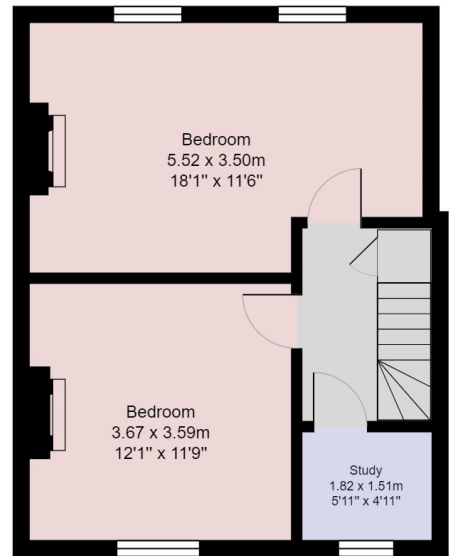
Score	Energy rating	Current	Potential
92+	A		
81-91	B		
69-80	C		79 C
55-68	D	65 D	
39-54	E		
21-38	F		
1-20	G		



# Perry Vale



1st Floor



2nd Floor

Gross Internal Area: 81.3 m<sup>2</sup> ... 876 ft<sup>2</sup>  
All measurements are approximate and for display purposes only.

