



TO LET

**Thurlow Park Rd,
West Dulwich**

£1,200 pcm

**1 Bedroom Hall Floor Flat
Unfurnished, with Garden**





Description

Hindwoods are delighted to present to the market a one-bedroom self-contained hall floor flat being one of four converted in an end of terrace brick faced building with a double bay window. Comes with sole use of rear garden.

The accommodation comprises:

LIVING ROOM

16' X 14' (4.88M X 4.27M) Three sash windows to bay. Coved ceiling cornice. Radiator.

Bedroom

13'6 x 7' (4.11m x 2.13m) Window to rear. Coved ceiling cornice. Radiator.

Kitchen

9'3 x 4'6 (2.82m x 1.37m) Range of wall and base units with inset stainless steel skin unit and worktop surfaces. Built in electric oven, gas hob and cooker hood. Plumbing for washing machine. Tiled backsplash. Potterton boiler. Window to rear.

Bathroom

Suite comprising enclosed bath with thermostatically controlled shower over, pedestal wash basin and W.C Part tiled walls. Radiator. Door to rear Garden.



Viewings

Strictly via Hindwoods.

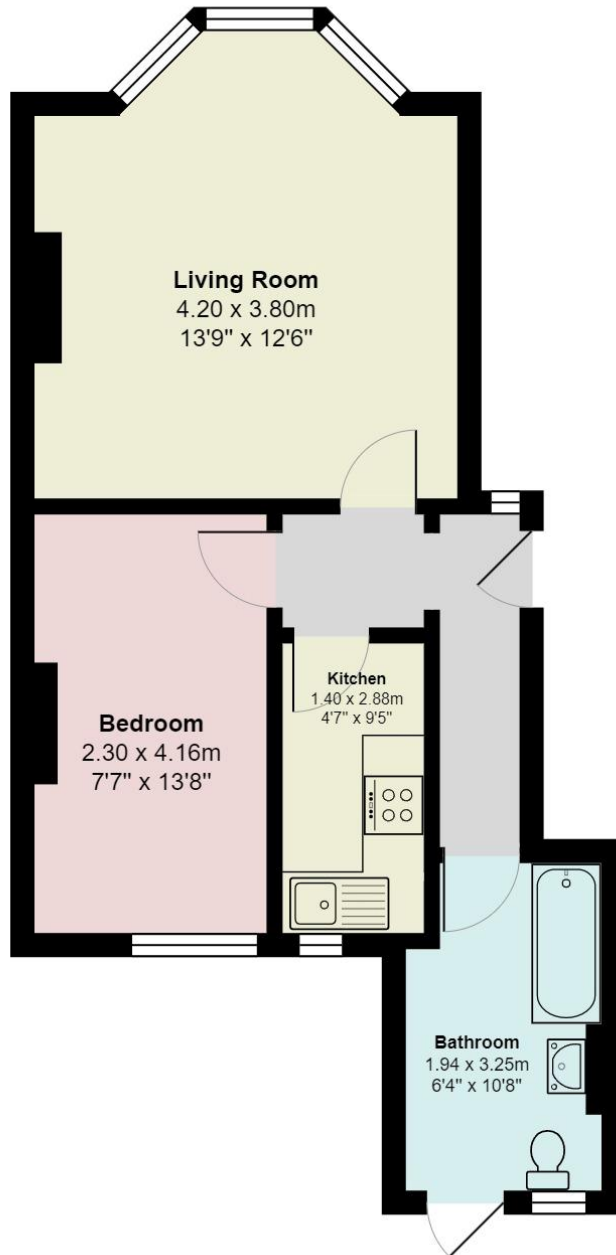
Donna Distin

d.distin@hindwoods.co.uk

23/02/2021 Energy performance certificate (EPC) - Find an energy certificate - GOV.UK

Score	Energy rating	Current	Potential
92+	A		
81-91	B		
69-80	C		74 C
55-68	D	57 D	
39-54	E		
21-38	F		

Thurlow Park Road



Total Area: 43.8 m² ... 471 ft²

All measurements are approximate and for display purposes only