



Hawthorne Court, Tile Hill, Coventry CV4 9AF  
Offers Over £220,000

**archerbassett**  
LETTINGS AND SALES



**\*EXCELLENT FIRST TIME PURCHASE OR INVESTMENT\*** A spacious four bedroom end terraced home with double glazing and gas central heating which is close to local amenities. Comprises of a lounge, downstairs W/C, spacious open plan dining /modern fitted kitchen with a range of wall and base units and integrated electric hob and oven. To the first floor are two double and two generously sized single bedrooms and a part tiled family bathroom with white suite to include bath with shower over, W/C and hand wash basin. To the front and rear are low maintenance gardens and off road parking.

**Lounge**  
**12'2" x 12'6" (3.71m x 3.82m)**  
Double glazed window to front, lounge with laminate flooring.

**Kitchen/Diner**  
**16'9" x 15'11" (5.10m x 4.85m)**  
Double glazed window to rear, spacious open plan diner/fitted kitchen with a range of wall and base units with integrated electric hob and oven.

**WC**  
Double glazed window to rear, downstairs W/C with hand wash basin.

**Bedroom 1**  
**11'10" x 8'11" (3.61m x 2.73m)**  
Double glazed window to front, spacious double room with carpet.

**Bedroom 2**  
**11'6" x 8'11" (3.50m x 2.73m)**  
Double glazed window to rear, spacious double room with carpet.

**Bedroom 3**  
**8'8" x 6'9" (2.64m x 2.05m)**  
Double glazed window to front, spacious single room with carpet.

**DISCLAIMER**

The details for this property advert are believed to be accurate but not all items shown in the photographs may be included and interested parties must not rely upon this advert or any other statement as being a representation of fact and must satisfy themselves by inspection or otherwise to the correctness of each of them. Archer Bassett, or any of its employees, has authority to make or give any representation or warranty whatsoever in relation to the property. All verbal statements made in the course of negotiations are made on the same understanding. This advert does not form part of any contract not does it constitute property particulars.

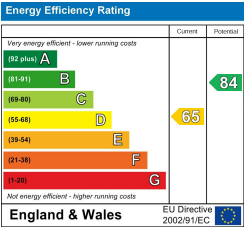
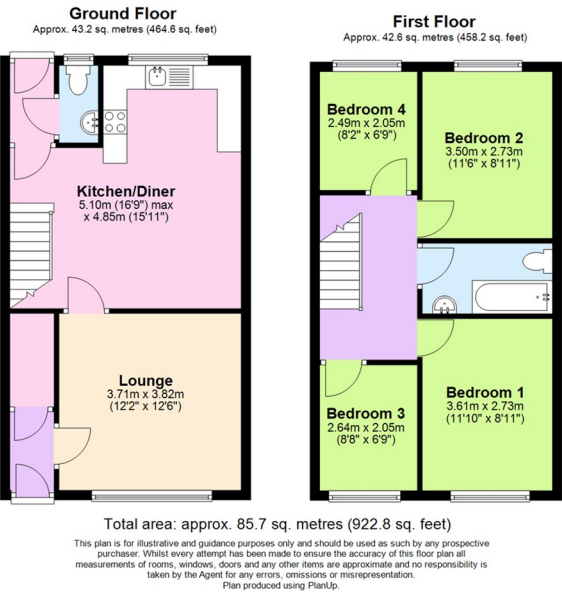
**Bedroom 4**  
**8'2" x 6'9" (2.49m x 2.05m)**  
Double glazed window to rear, spacious double room with carpet.

**Bathroom**  
**4'10" x 8'11" (1.48m x 2.73m)**  
Part tiled bathroom with white suite to include bath with shower over, W/C and hand wash basin.

**Tenure - Freehold**  
The agent has been informed that the property is offered freehold however any interested party should obtain confirmation of this via their own solicitor or legal representative.

**Viewings**  
Viewings are strictly by appointment only via Archer Bassett.

**Agent Notes**  
1. Anti-Money Laundering (AML) Regulations – All named purchasers and anyone gifting funds will be asked to produce identification documentation before proceeding to instruction of solicitors and we would ask for your co-operation in order to proceed to agreeing the sale as soon as possible.  
2. Source of Funds - All named purchasers and anyone gifting funds will be asked to produce evidence of the source of their funds before proceeding to instruction of solicitors.  
3. These particulars do not constitute part or all of an offer or contract.  
4. Any measurements indicated are intended for guidance only and as such must not be relied upon and any interested parties are advised to confirm any measurements before committing to any offer.  
5. Archer Bassett has not tested any equipment, appliances, fixtures, fittings or services.



67 Hertford Street, Coventry CV1 1LB  
**024 7623 7500**  
sales@archerbassett.co.uk  
archerbassett.co.uk