

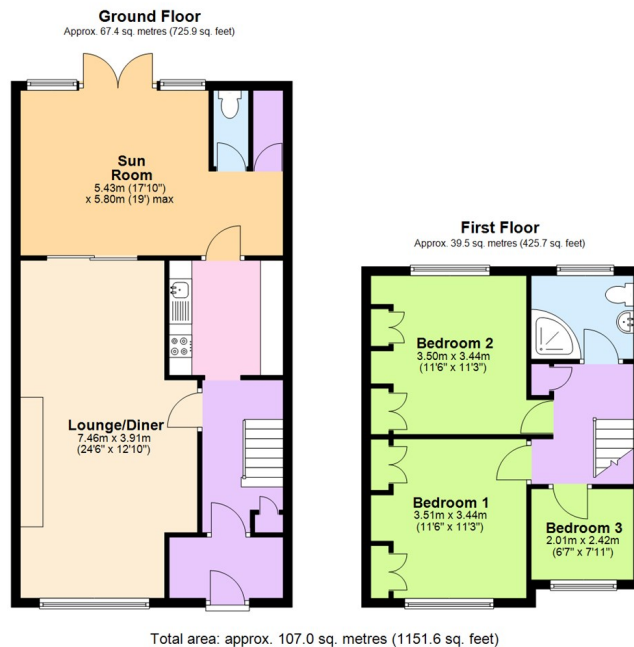


Torbay Road, Allesley Park, Coventry CV5 9JL
Offers In The Region Of £239,950

archerbassett
LETTINGS AND SALES

- Spacious family home located in the popular Allesley Park area.
- Large through lounge/diner.
- Fitted kitchen
- Garden front and rear
- Three Bedrooms.
- Sun room with ground floor W/C.
- Bathroom with corner shower & vanity units
- Scope to extend to the rear (STPP)

This spacious three bedroom family home stands back from the road and is situated in the Allesley Park area which is ideally located for local schools and local amenities and comes with double glazing & central heating. From the entrance hall is a large through lounge/diner with patio doors out into the sun room which has a W/C, storage cupboard and plumbing for a washing machine and the fitted kitchen has a range of white wall & base units. To the first floor are two double bedrooms both of which have fitted wardrobes, a further single bedroom and a good size bathroom with corner shower & vanity units. Externally there is a lawned fore garden and the rear garden has a patio & decked area, lawn and a small garage suitable for storage. The property is in need of some updating and also offers scope to extend to the rear (subject to planning permission). ** Floor plan will be uploaded shortly**



This plan is for illustrative and guidance purposes only and should be used as such by any prospective purchaser. Whilst every attempt has been made to ensure the accuracy of this floor plan all measurements of rooms, windows, doors and any other items are approximate and no responsibility is taken by the Agent for any errors, omissions or misrepresentation. Plan produced using PlanUp.

