



Swan Copse, Yardley, Birmingham B25 8LR
Guide Price £70,000

archerbassett
LETTINGS AND SALES

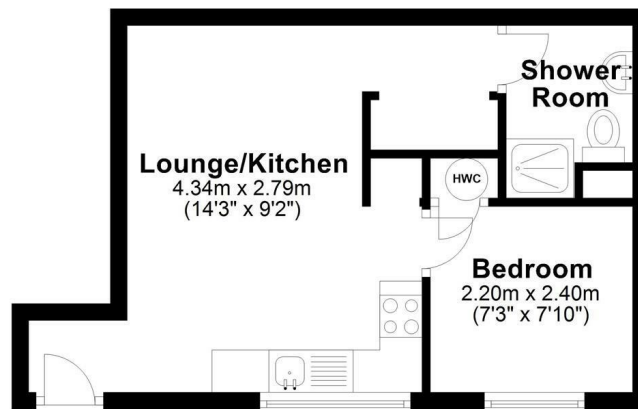
- ATTENTION INVESTORS - TENANT IN-SITU - CURRENT INCOME OF £7140PA
- OPEN PLAN LOUNGE/KITCHEN
- DOUBLE GLAZING
- CLOSE TO TRAIN STATION
- ONE BEDROOM GROUND FLOOR FLAT
- OFF ROAD PARKING
- BEING SOLD VIA SECURE SALE ONLINE BIDDING. TERMS & CONDITIONS APPLY - STARTING BID £75,000
- NO SERVICE CHARGE OR GROUND RENT

ATTENTION INVESTORS - TENANT IN-SITU - CURRENT INCOME OF £7140PA - BEING SOLD VIA SECURE SALE ONLINE BIDDING. TERMS & CONDITIONS APPLY - STARTING BID £75,000 A modern one bedroom ground floor maisonette within walking distance of Acocks Green train station benefiting from double glazing and electric heating, briefly comprising of open plan lounge/kitchen to include built in electric oven and hob, bedroom and shower room.



Floor Plan

Approx. 27.0 sq. metres (291.0 sq. feet)



Total area: approx. 27.0 sq. metres (291.0 sq. feet)

This floor plan is for illustration purposes only, this is not intended to be a measured/scaled survey or comply with RICS guidelines. All measurements (including total floor area) openings, orientation and floor area are approximate. No details are guaranteed, they cannot be relied upon for any purpose and do not form part of any agreement. A party must rely upon its own inspection(s). No responsibility is taken for any error, omission, or mis-statement.

Plan produced using PlanUp.