

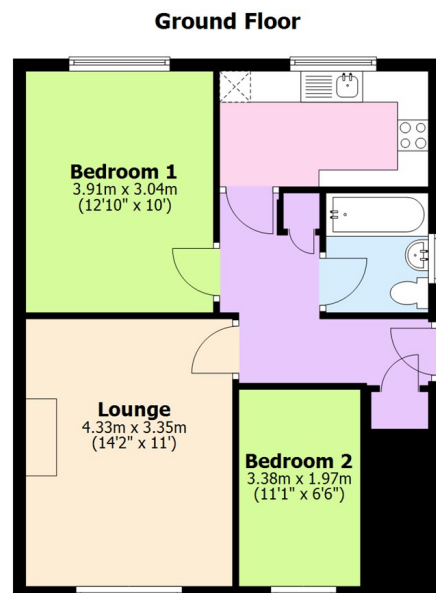


Sunnybank Avenue, Whitley, Coventry CV3 4DQ
Offers In The Region Of £125,000

archerbassett
LETTINGS AND SALES

- VACANT POSSESSION - NO UPWARD CHAIN
- IDEAL INVESTMENT OR FIRST TIME PURCHASE
- SPACIOUS LOUNGE
- MODERN FITTED KITCHEN
- PRIVATE LOW MAINTENANCE REAR GARDEN
- LONG LEASE - 107 YEARS REMAINING
- GROUND FLOOR & WELL PRESENTED THROUGHOUT
- TWO GENEROUS SIZE BEDROOMS
- BATHROOM WITH WHITE SUITE
- OFF ROAD PARKING TO THE REAR

This well presented ground floor maisonette is offered for sale with no upward chain and would make a great first time purchase or investment (anticipated yield approx. 7.50%) and comes with a long lease of 107 years. In brief there is a spacious lounge with gas fire, two well proportioned bedrooms, a modern fitted kitchen with a range of cream high gloss wall and base units along with an integrated oven, gas hob & extractor unit and the tiled bathroom comes with a white suite to include bath with shower over. Externally there is lawned fore garden and a low maintenance private garden to the rear with a brick built storage shed and a parking space behind. This well maintained maisonette comes with double glazing and central heating throughout and is ready to move in to & is well worth a viewing.



This plan is for illustrative and guidance purposes only and should be used as such by any prospective purchaser. Whilst every attempt has been made to ensure the accuracy of this floor plan all measurements of rooms, windows, doors and any other items are approximate and no responsibility is taken by the Agent for any errors, omissions or misrepresentation.
Plan produced using PlanUp.