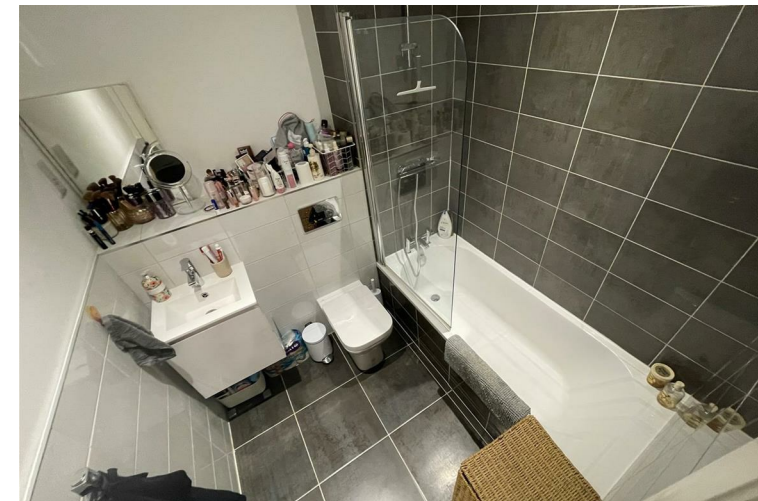


The Co-Operative, Corporation Street, Coventry CV1 1GF
Offers In The Region Of £165,000

archerbassett
LETTINGS AND SALES

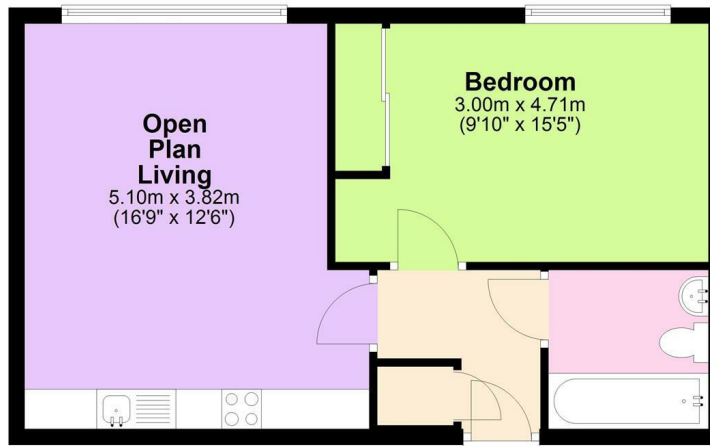
- PRESTIGIOUS DEVELOPMENT
- ON SITE GYM AREA
- SECURE ENTRY
- CURRENTLY ACHEIVING A RENTAL INCOME OF £12,600
- MODERN AND SPACIOUS
- INDOOR PARK
- LIFT ACCESS

****INVESTORS ONLY - CURRENTLY ACHEIVING A RENTAL INCOME OF £12,600PA**** Modern one bedroom apartment in the prestigious Co-Operative redevelopment set around the region's first indoor park in the heart of the City Centre. The secure reception area has lift access to all floors and all apartments wrap around the landscaped indoor park which is exclusively for the use of residents. The apartment is currently let on a fully furnished basis and has been finished to the highest of standards throughout to include an open plan living/kitchen area with integrated oven & ceramic hob, fridge/freezer, washer/dryer and dishwasher. The double bedroom benefits from fitted wardrobes and the bathroom is fitted with a bath with mixer shower over. There are communal gym & exercise areas exclusively for residents along with a stylish rooftop Resident's Lounge on the 3rd floor.



Ground Floor

Approx. 44.1 sq. metres (475.2 sq. feet)



Total area: approx. 44.1 sq. metres (475.2 sq. feet)

This plan is for illustrative and guidance purposes only and should be used as such by any prospective purchaser. Whilst every attempt has been made to ensure the accuracy of this floor plan all measurements of rooms, windows, doors and any other items are approximate and no responsibility is taken by the Agent for any errors, omissions or misrepresentation.
Plan produced using PlanUp.