

SOLD BY
STC

archer
bassett
LETTINGS AND SALES



Cedars Avenue, Coundon, Coventry CV6 1DR
Offers In The Region Of £229,950

archerbassett
LETTINGS AND SALES

A spacious three bedroom double bayed mid terraced home which is well placed for local amenities, public transport and is just a short walk to Coundon Wedge and comes with recently installed double glazing (2023) & central heating throughout. From the entrance hall which has original Minton tiles is the spacious reception room with a large bay window, feature fire place and varnished wooden flooring, there is an open plan fitted kitchen/diner to the rear with integrated oven & hob and patio doors leading through to the full width double glazed conservatory which has plumbing for a washing machine. To the first floor are two double bedrooms with the principle bedroom having fitted wardrobes, a good size single bedroom and a modern family bathroom to include bath with shower over. Externally there is a low maintenance garden to the front and the enclosed rear garden has two patio areas and a lawn. This lovely family home is well worth viewing and offers great potential to further extend & improve should the new owners wish to do so.

Lounge
13'4" x 10'8" (4.07m x 3.25m)

Spacious lounge with bay window, feature fireplace and varnished wooden flooring.

Hallway
13'7" x 5'8" (4.13m x 1.72m)

With original Minton tiles, under stairs storage cupboard & doors off to the reception room & kitchen diner.

Kitchen/Diner
9'3" x 16'8" (2.81m x 5.07m)

Spacious and well planned kitchen/diner with laminate flooring, a range of fitted units with integrated oven & hob, feature fire place and French doors to conservatory.

Conservatory
6'8" x 16'1" (2.02m x 4.89m)

Full width UPVC conservatory with electrics, plumbing for a washing machine & French doors leading out to the decked patio & the garden beyond

DISCLAIMER

The details for this property advert are believed to be accurate but not all items shown in the photographs may be included and interested parties must not rely upon this advert or any other statement as being a representation of fact and must satisfy themselves by inspection or otherwise to the correctness of each of them. Archer Bassett, or any of its employees, has authority to make or give any representation or warranty whatsoever in relation to the property. All verbal statements made in the course of negotiations are made on the same understanding. This advert does not form part of any contract nor does it constitute property particulars.

Bedroom 1
13'10" x 10'8" (4.21m x 3.25m)

Spacious double bedroom with bay window & fitted wardrobes.

Bedroom 2
11'0" x 10'8" (3.36m x 3.25m)

A further double bedroom situated to the rear with varnished wooden flooring & cupboard housing the central heating boiler.

Bedroom 3
8'0" x 5'9" (2.44m x 1.76m)

Good size single bedroom with varnished wooden flooring.

Bathroom
6'6" x 5'8" (1.99m x 1.73m)

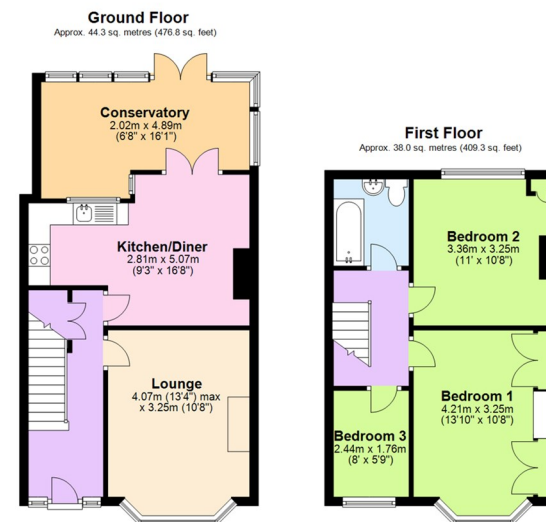
Part tiled modern bathroom with white suite to include bath with shower screen & shower over.

Tenure - Freehold

The agent has been informed that the property is offered freehold however any interested party should obtain confirmation of this via their own solicitor or legal representative.

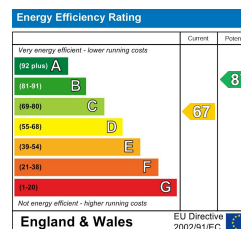
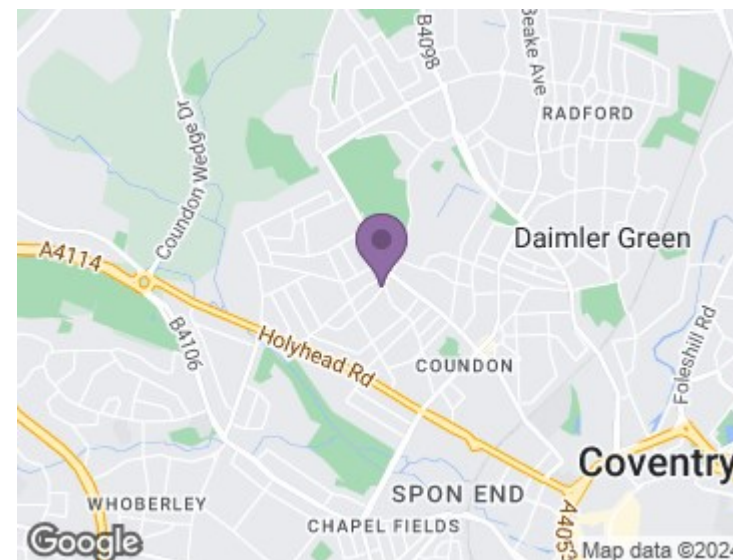
Viewings

Viewings are strictly by appointment only via Archer Bassett.



Total area: approx. 82.3 sq. metres (886.1 sq. feet)

This plan is for illustrative and guidance purposes only and should be used as such by any prospective purchaser. Whilst every attempt has been made to ensure the accuracy of this floor plan all measurements of rooms, windows, doors and any other items are approximate and no responsibility is taken by the Agent for any errors, omissions or misrepresentation. Plan produced using PlanUp.



67 Hertford Street, Coventry CV1 1LB

024 7623 7500

sales@archerbassett.co.uk

archerbassett.co.uk