



Torrington Avenue, Tile Hill, Coventry CV4 9AR
Offers Over £179,950

archerbassett
LETTINGS AND SALES

**** IDEAL INVESTMENT OR FIRST TIME PURCHASE **** A well presented two double bedroom terraced home with double glazing and gas central heating throughout. Comprising of a good sized lounge with bay window, spacious kitchen/diner with range of wall and base units and integrated electric hob and oven. To the first floor there is a fully tiled bathroom with white suite to include bath with shower over and two double bedrooms with one having built in storage cupboard. Other features include low maintenance lawned front garden and part lawned/part decked rear garden with external storage.

Hallway

9'11" x 3'5" (3.03m x 1.05m)

Entrance hallway with UPVC front door.

Lounge

12'11" x 10'10" (3.94m x 3.30m)

Double glazed bay window to front, spacious lounge with laminate flooring

Kitchen/Diner

10'10" x 14'8" (3.30m x 4.47m)

Generously sized kitchen/diner with two double glazed windows to rear and UPVC door with access to garden. Also benefits from two built in storage cupboards, range of wall and base units and integrated electric hob and oven.

Bedroom 1

10'10" x 11'6" (3.30m x 3.51m)

Double glazed window to front, carpeted double room with built in over stair storage cupboard.

Bedroom 2

11'2" x 8'10" (3.40m x 2.70m)

Double glazed window to rear, bedroom with carpet.

Bathroom

6'3" x 5'3" (1.90m x 1.60m)

Double glazed window with privacy glass to rear, fully tiled bathroom with white suite including bath with shower over, w/c and hand wash basin.

DISCLAIMER

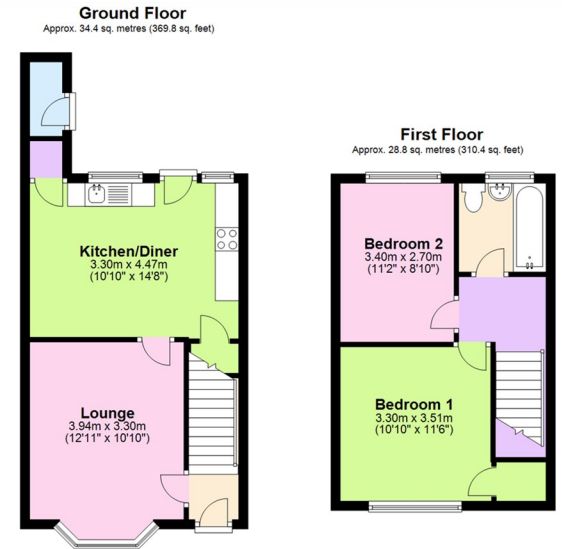
The details for this property advert are believed to be accurate but not all items shown in the photographs may be included and interested parties must not rely upon this advert or any other statement as being a representation of fact and must satisfy themselves by inspection or otherwise to the correctness of each of them. Archer Bassett, or any of its employees, has authority to make or give any representation or warranty whatsoever in relation to the property. All verbal statements made in the course of negotiations are made on the same understanding. This advert does not form part of any contract not does it constitute property particulars.

Tenure (Freehold)

The agent has been informed that the property is offered freehold however any interested party should obtain confirmation of this via their own solicitor or legal representative.

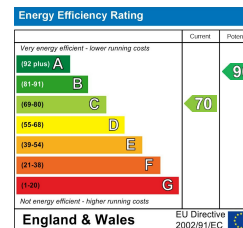
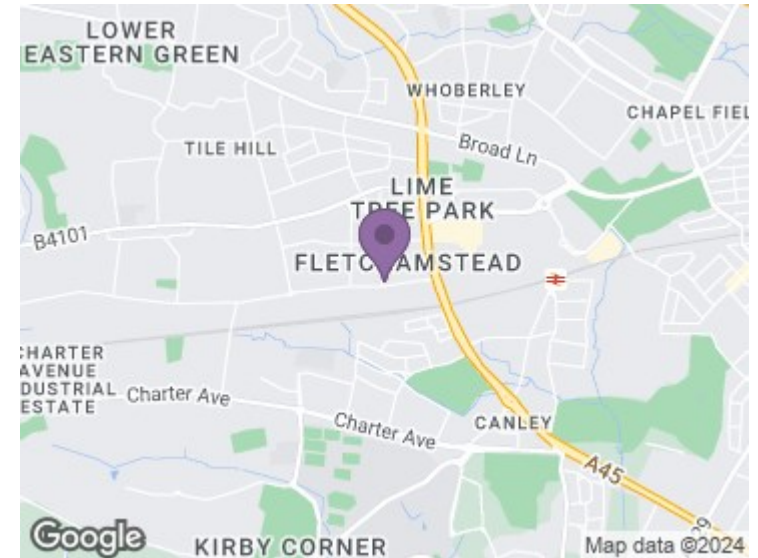
Viewing Arrangements

Viewings are strictly by appointment only via Archer Bassett.



Total area: approx. 63.2 sq. metres (680.1 sq. feet)

This plan is for illustrative and guidance purposes only and should be used as such by any prospective purchaser. Whilst every attempt has been made to ensure the accuracy of this floor plan all measurements of rooms, windows, doors and any other items are approximate and no responsibility is taken by the Agent for any errors, omissions or misrepresentation. Plan produced using PlanUp.



67 Hertford Street, Coventry CV1 1LB
024 7623 7500
 sales@archerbassett.co.uk
 archerbassett.co.uk