



32 Millside, Stalham, NR12 9PA

£200,000









£200,000

# 32 Millside

Stalham, NR12 9PA

- Spacious Chalet Style House
- Well Presented With Lots Of Potential For Modernisation
- Garage En-Bloc with Direct Access from Garden
- Electric Warm Air Heating
- Spacious Kitchen/Diner
- Three Bedrooms
- Nicely Positioned
- Potential To Create Driveway Parking To The Front (STPP)
- Generous 5m Garden Facing Lounge
- Offered With No Onward Chain

A nicely positioned, three bedroom semi detached chalet style house, located in the popular Broadland town of Stalham. Presented in good order throughout with lots of potential for modernisation, this spacious property offers accommodation including an entrance hall, kitchen/diner, garden facing lounge, three bedrooms and a first floor bathroom. There is a delightful enclosed rear garden with direct access to a garage en bloc, and a lawned front garden, with potential to create off road parking, subject to the required permissions. Early internal viewing is highly recommended to appreciate this competitively priced property which is offered with no onward chain.



## Entrance Hall

Glazed entrance door with glazed side panel, telephone point, stairs to first floor landing, doors leading off;

## Kitchen/Diner 16'6" x 11'4" reducing to 8'2" (5.04m x 3.46m reducing to 2.49m)

Two front facing windows, cupboard housing central heating warm air boiler, under stair cupboard, a range of fitted kitchen units with tiled splash backs, sink drainer with mixer tap, electric oven and hob, plumbing for washing machine, power points, electric cooker point.

## Lounge 16'6" x 11'2" (5.03m x 3.42m)

Rear facing window and glazed door giving access to rear garden, power points, thermostat for heating, television point.

## First Floor Landing

Airing cupboard housing hot water cylinder with immersion heater, loft access, power point, doors leading off;







**Bedroom 1** 16'6" x 8'10" reducing to 7'8" (5.03m x 2.7m reducing to 2.35m)

Rear facing window, power points.

**Bedroom 2** 8'11" x 7'7" (2.73m x 2.32m)

Front facing window, power points.

**Bedroom 3** 7'7" x 7'2" (2.32m x 2.2m)

Front facing window, power point, built-in cupboard and fitted shelving.

**Bathroom**

Side facing obscure glazed window, panelled bath, low level w.c., pedestal hand wash basin.

**Outside**

The property is nicely situated with vehicular access to the rear with a garage en-bloc with direct access into the rear garden.

**Garage** 15'10" x 7'9" (4.85m x 2.37m)

Front facing up and over door, power and lighting.

## Directions

From Aldreds Stalham office proceed along St Johns Road turning right onto the Brumstead Road, turn right at the 'T' junction, then turning left at the mini roundabout onto Old Yarmouth Road. Turn right into Millside, then second right again, where the property can be found a short way along on the right hand side.





### Gardens

The property offers a lawned front garden with paved pathway leading to a side entrance with gate giving access beyond to the rear. The rear garden is nicely enclosed with close board panel fencing to boundaries with a patio directly to the rear of the property, laid to lawn with a variety of well stocked shrubbery and planting. External power and security lighting.

### Tenure

Freehold.

### Services

Mains water, electric and drainage.

### Council Tax

North Norfolk Borough Council - Band: B.

### Location

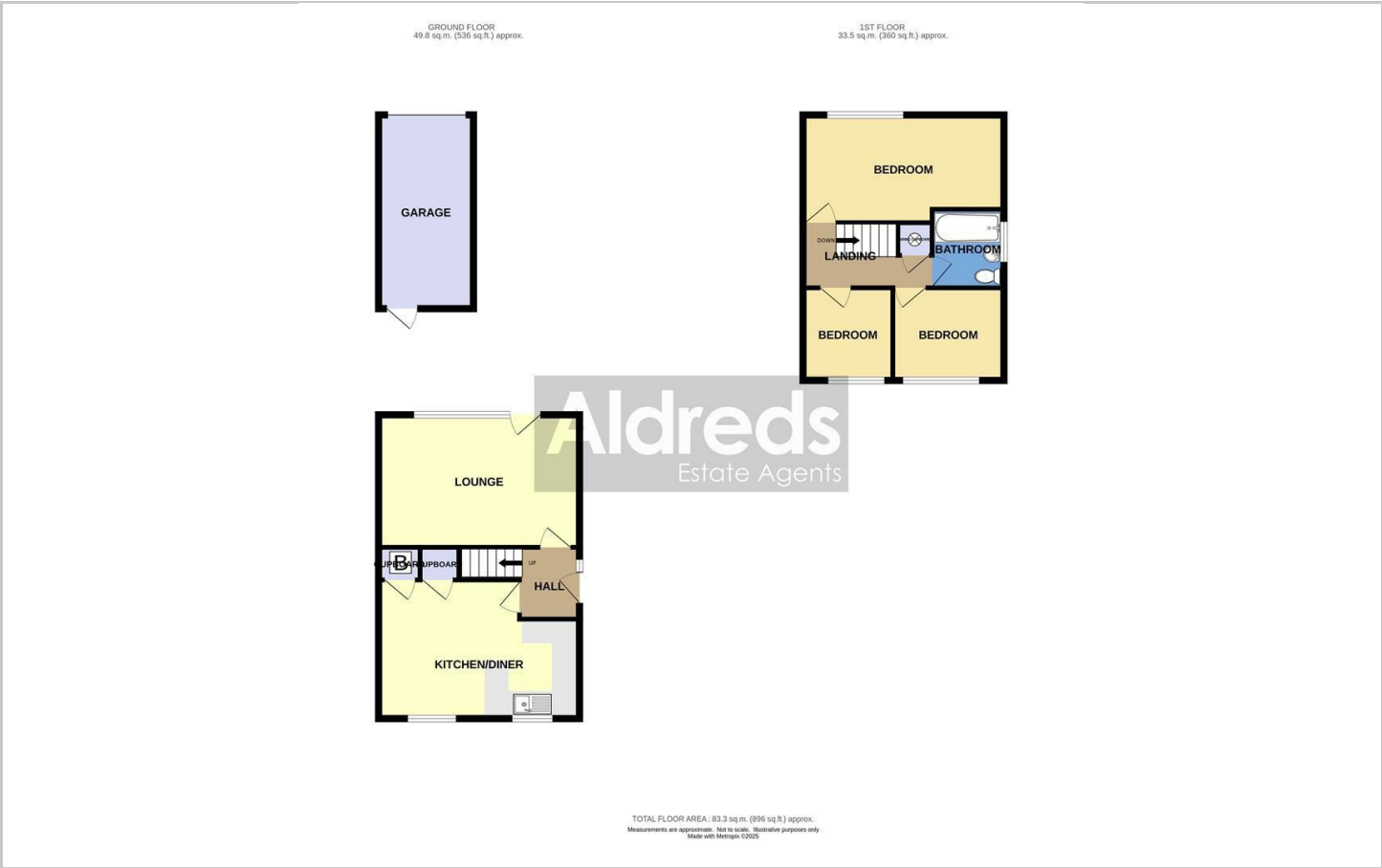
Stalham is a popular Broadland Town with its own range of facilities, which include a public staithe on the upper reaches of the River Ant, marina, health centre, schools, library, post office, Tesco supermarket and a variety of High Street shops and food outlets.

### Reference

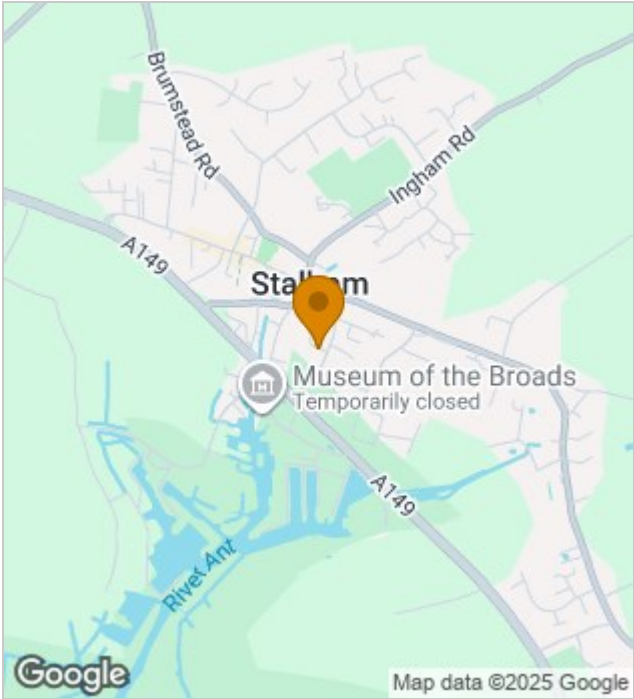
PJL/S9939



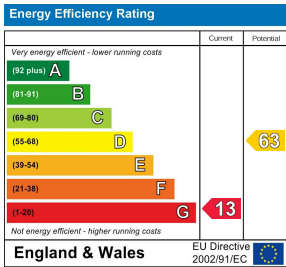
Floor Plans



Location Map



Energy Performance Graph



Viewing

Please contact our Aldreds Stalham Office on 01692 581089 if you wish to arrange a viewing appointment for this property or require further information.

Disclaimer  
These particulars are issued on an understanding that all negotiations shall be conducted through Messrs. Aldreds. Please note: Messrs. Aldreds for themselves and for the vendors or lessors of this property whose agents they are given notice that: 1. Particulars are set out as a general outline only for guidance of intending purchasers or lessees, and do not constitute nor constitute part of, an offer or contract. 2. All descriptions, dimensions, references to condition and necessary permissions for use and occupation, and other details are given without responsibility and any intending purchasers or tenants should not rely on them as statements or representations of fact but must satisfy themselves by inspection or otherwise as to the correctness of each of them. 3. No person in the employment of Messrs. Aldreds has any authority to make or give any representation or warranty whatever in relation to this property. 4. If you are proposing to visit the property and are travelling some distance please check with Aldreds on the issue of availability prior to travelling. 5. Aldreds Property Consultants and associated services may offer additional services to the prospective purchaser for which they will be entitled to receive a commission. Aldreds are pleased to be working with Mortgage Advice Bureau. They're an award-winning mortgage broker with over 1,400 advisers across the UK, and have access to over 12,000 mortgage products from over 90 lenders. Aldreds Estate Agents Ltd receive a commission of £200 on each completed case. Your home may be repossessed if you do not keep up repayments on your mortgage. There may be a fee for mortgage advice. The actual amount you pay will depend upon your circumstances. The fee is up to 1%, but a typical fee is 0.3% of the amount borrowed. Mortgage Advice Bureau is a trading name of Mortgage Seeker Limited which is an appointed representative of Mortgage Advice Bureau Limited and Mortgage Advice Bureau (Derby) Limited which are authorised and regulated by the Financial Conduct Authority. Mortgage Seeker Limited Registered Office: Lovewell Blake, Sixty Six North Quay, Great Yarmouth, Norfolk, NR30 1HE. Registered in England Number: 03721415. 6. Potential purchasers should check with their providers that the broadband and mobile phone coverage they would require is available.