

Aldreds
Estate Agents



2a Church Lane, Mundesley, NR11 8AU

£400,000





2a Church Lane

Mundesley, NR11 8AU

- Spacious Detached House
- Triple Aspect Lounge
- Three Double Bedrooms
- Gas Fired Central Heating
- Beautifully Maintained Garden
- Beautifully Presented in a Contemporary Style
- Generous Kitchen/Diner
- Ground Floor Cloakroom & First Floor Bathroom
- Insulated Garden Building
- Recently Constructed Garage and Parking

Aldreds are pleased to offer this three bedroom detached house situated in the sought after coastal village of Mundesley. This beautifully presented home offers light and spacious accommodation including an entrance hall, a 6.55m triple aspect lounge, spacious kitchen/diner with utility space and pantry, ground floor cloakroom, three first floor double bedrooms and bathroom. A particular feature of the property is the insulated garden building, ideal as a home office or leisure space and the recently constructed 5.75m x 4.65m garage to the rear. The property offers gas fired central heating, a nicely enclosed garden and parking for two cars. Early internal viewing is highly recommended to appreciate this well appointed property.

£400,000



Entrance Hall

Part glazed glazed composite entrance door with glazed side panels, radiator, power points, telephone point, smoke detector, stairs to the first floor landing, doors leading off;

Lounge 21'5" x 11'11" (6.55m x 3.64m)

A spacious triple aspect room with windows to front and side, rear facing glazed French doors leading to garden, brick fireplace backdrop, power points, television point, telephone point, two radiators, wall lighting.

Kitchen/Diner 21'5" x 9'7" (6.53m x 2.94m)

Windows to front and rear aspects, a range of modern fitted kitchen units with rolled edge work surface, sink drainer with mixer tap, space for range cooker with stainless steel chimney style extractor over, integrated dishwasher, power points, radiator, open plan access to;





Utility Area

Pantry cupboard, store cupboard, a range of fitted units, plumbing for washing machine, radiator, window to rear aspect, door to rear garden, door giving access to;

Cloakroom

Rear facing obscure glazed window, low level w.c., hand wash basin.

First Floor Landing

Rear facing window, airing cupboard housing gas fired boiler for hot water and central heating, doors leading off;

Bedroom 1 11'11" x 11'3" (3.64m x 3.43m)

Windows to side and rear aspects, radiator, power points.

Bedroom 2 14'11" x 9'10" (4.55m x 3.01m)

Windows to front and side aspects, radiator, points, built-in cupboard.

Bedroom 3 12'6" x 9'8" (3.82m x 2.96m)

Window to front aspect, radiator, power points, built-in wardrobe.

Directions

Arriving in Mundesley on the Trunch Road B1145, continue as the road runs into the High Street. In the centre of the village, turn left into Station Road, then Right into Church Lane, where the property can be found a short way along on the left, located by our 'For Sale' board.



Bathroom

Rear facing obscure glazed window, panelled P-shaped bath with shower screen and raindrop showerhead over, hand wash basin within a fitted storage unit, heated towel rail, low level w.c., ventilation, electric underfloor heating.

Outside

The property occupies a pleasant position with a lawned front garden with a picket style fencing to a raised level with pedestrian gate giving access to main entrance. The front garden offers a timber garden shed and access to the rear where there is a delightful enclosed garden with close board panel fencing to boundaries, laid to lawn with shingled areas, with two parking spaces beyond, access via pedestrian gate.

Garden Building 16'4" x 7'9" (5m x 2.38m)

A wonderful additional space, insulated with glazed French doors and windows to front aspect, power points with USB charging, inset LED ceiling lighting, hard wired for Wi-Fi.

Garage 18'10" x 15'3" (5.75m x 4.65m)

Recently constructed and insulated with electrically operated roller door, side service door, power and lighting, mezzanine storage area.

Tenure

Freehold.

Services

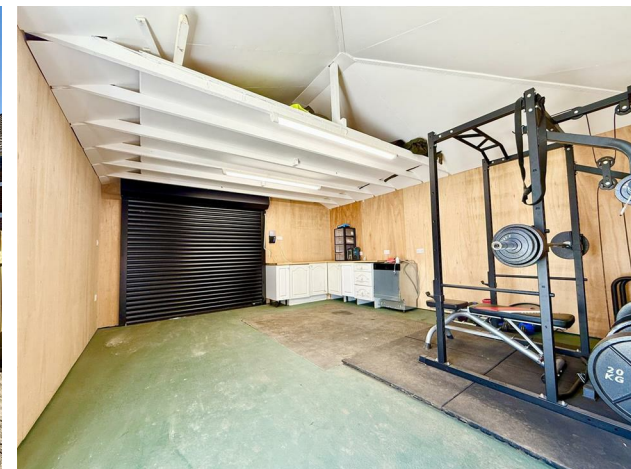
Mains water, electric, drainage and gas.

Council Tax

North Norfolk District Council - Band: 'D'

Reference

PJL/S9929



Floor Plans



Viewing

Please contact our Aldreds Stalham Office on 01692 581089 if you wish to arrange a viewing appointment for this property or require further information.

Disclaimer
These particulars are issued on an understanding that all negotiations shall be conducted through Messrs. Aldreds. Please note: Messrs. Aldreds for themselves and for the vendors or lessors of this property whose agents they are given notice that: 1. Particulars are set out as a general outline only for guidance of intending purchasers or lessees, and do not constitute nor constitute part of, an offer or contract. 2. All descriptions, dimensions, references to condition and necessary permissions for use and occupation, and other details are given without responsibility and any intending purchasers or tenants should not rely on them as statements or representations of fact but must satisfy themselves by inspection or otherwise as to the correctness of each of them. 3. No person in the employment of Messrs. Aldreds has any authority to make or give any representation or warranty whatever in relation to this property. 4. If you are proposing to visit the property and are travelling some distance please check with Aldreds on the issue of availability prior to travelling. 5. Aldreds Property Consultants and associated services may offer additional services to the prospective purchaser for which they will be entitled to receive a commission. Aldreds are pleased to be working with Mortgage Advice Bureau. They're an award-winning mortgage broker with over 1,400 advisers across the UK, and have access to over 12,000 mortgage products from over 90 lenders. Aldreds Estate Agents Ltd receive a commission of £200 on each completed case. Your home may be repossessed if you do not keep up repayments on your mortgage. There may be a fee for mortgage advice. The actual amount you pay will depend upon your circumstances. The fee is up to 1%, but a typical fee is 0.3% of the amount borrowed. Mortgage Advice Bureau is a trading name of Mortgage Seeker Limited which is an appointed representative of Mortgage Advice Bureau Limited and Mortgage Advice Bureau (Derby) Limited which are authorised and regulated by the Financial Conduct Authority. Mortgage Seeker Limited Registered Office: Lovewell Blake, Sixty Six North Quay, Great Yarmouth, Norfolk, NR30 1HE. Registered in England Number: 03721415. 6. Potential purchasers should check with their providers that the broadband and mobile phone coverage they would require is available.

Location Map



Energy Performance Graph

