

Aldreds
Estate Agents



10 Lea Road, Catfield, NR29 5BH

£275,000





10 Lea Road

Catfield, NR29 5BH

- Spacious Detached Bungalow
- En Suite Cloakroom & Wet Room
- Oil Fired Central Heating
- Lovely Mature Garden
- Popular Broadland Village
- Three Bedrooms
- uPVC Sealed Unit Double Glazed Windows
- PV Solar Panels
- Driveway Parking
- Offered With No Onward Chain

Aldreds are pleased to offer this spacious three bedroom detached bungalow situated in a pleasant position within the Broadland village of Catfield. This attractive bungalow offers an entrance hall, lounge, kitchen, three bedrooms (one with en-suite cloakroom) and a 'wet room' style shower room. A particular feature of the property is the wonderful, well stocked garden offering a high degree of privacy. The property further offers oil fired central heating, uPVC sealed unit double glazed windows and driveway parking. Offered with no onward chain, early internal viewing is highly recommended to appreciate.

£275,000



Entrance Hall

Part glazed entrance door with glazed side panel, power point, telephone point, radiator, loft access, airing cupboard housing hot water cylinder with immersion heater, doors leading off;

Lounge 13'10" x 11'9" inc to 13'9" (4.24m x 3.6m inc to 4.2m)

Bay window to front aspect, radiator, power points, television point, thermostat, door giving access to;

Kitchen 10'3" x 9'2" (3.13m x 2.8m)

Window to rear aspect, part glazed door to side leading to rear garden, tiled flooring, oil fired boiler for hot water and central heating, radiator, airing cupboard access, a range of fitted kitchen units with rolled edge work surface and tiled splash back, stainless steel sink drainer with mixer tap, plumbing for washing machine, integrated electric double oven, ceramic hob and extractor, door from hallway.





Shower Room 8'4" x 5'3" (2.55m x 1.62m)

A 'wet room' style shower room with two rear facing obscure glazed windows, low level w.c., pedestal hand wash basin, non slip flooring with concave floor with floor drain, electric shower attachment, ventilation, radiator.

Bedroom 1 12'8" x 10'5" (3.87m x 3.18)

Window to front aspect, radiator, power points.

Bedroom 2 10'4" x 10'4" (3.17m x 3.17m)

Rear facing window, radiator, power points, door giving access to;

Bedroom 3 18'5" x 9'0" at max (5.63m x 2.76m at max)

A spacious double aspect room, ideally suited otherwise as a second sitting room or study with front facing bay window, glazed French doors leading to rear garden, fitted wardrobe, radiator, power points, door to;

En-Suite Cloakroom

Rear facing obscure glazed window, low level w.c., pedestal hand wash basin with tiled splash back, tiled flooring.

Directions

From Aldreds Stalham office proceed along the A149 towards Great Yarmouth for approximately three miles. Turn right into New Road, then first left into Lea Road, where the property can be found towards the end of the road on the right hand side, located by our FOR SALE board.



Outside

The property occupies a generous plot with a beautiful mature garden. The rear garden is nicely enclosed with a variety of well stocked shrubbery and planting, pond, greenhouse, timber garden shed, external water and power supply, uPVC oil storage tank. The property has a brick weave driveway, providing parking space for two vehicles and a lawned front garden with central pathway.

Tenure

Freehold.

Services

Mains water, electric and drainage.

Council Tax

North Norfolk District Council - Band: C.

Energy Performance Certificate (EPC)

EPC Rating: 'C'

Agents Note

The property is fitted with PV solar panels.

Location

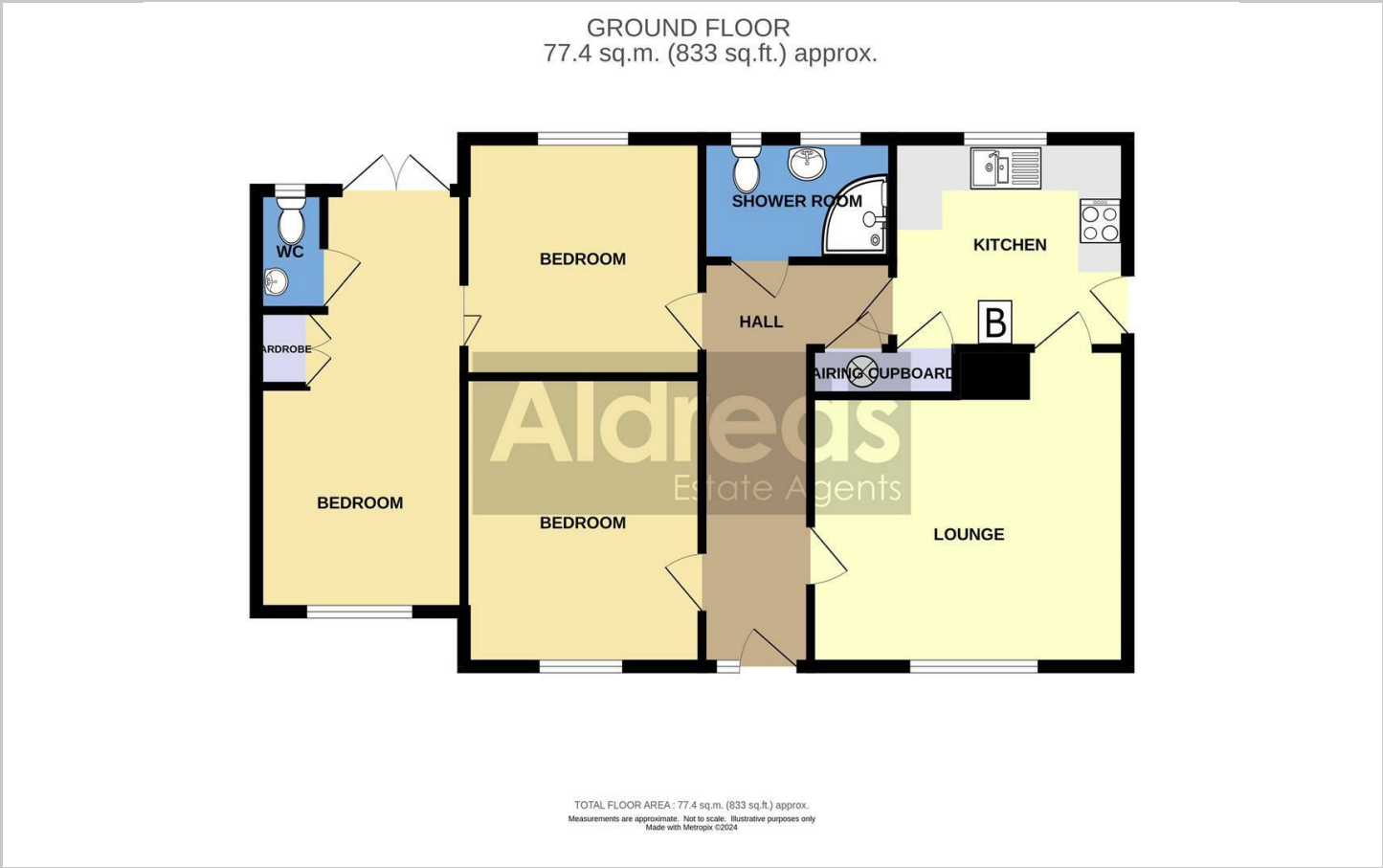
Catfield is a semi rural Broadland village with facilities including Post Office/Store, First School, Church, Bus Service and a Public House. The village lies conveniently between the Rivers Ant and Thurne. Catfield Staithe offers boating access to Hickling Broad and the River Thurne beyond. The nearby Broadland town of Stalham offers a full range of amenities and is approximately 3 miles distant, with Norwich and Great Yarmouth both approximately 14 miles.

Reference

PJL/S9882



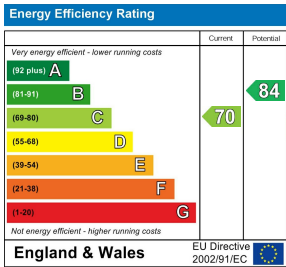
Floor Plans



Location Map



Energy Performance Graph



Viewing

Please contact our Aldreds Stalham Office on 01692 581089 if you wish to arrange a viewing appointment for this property or require further information.

Disclaimer
These particulars are issued on an understanding that all negotiations shall be conducted through Messrs. Aldreds. Please note: Messrs. Aldreds for themselves and for the vendors or lessors of this property whose agents they are given notice that: 1. Particulars are set out as a general outline only for guidance of intending purchasers or lessees, and do not constitute nor constitute part of, an offer or contract. 2. All descriptions, dimensions, references to condition and necessary permissions for use and occupation, and other details are given without responsibility and any intending purchasers or tenants should not rely on them as statements or representations of fact but must satisfy themselves by inspection or otherwise as to the correctness of each of them. 3. No person in the employment of Messrs. Aldreds has any authority to make or give any representation or warranty whatever in relation to this property. 4. If you are proposing to visit the property and are travelling some distance please check with Aldreds on the issue of availability prior to travelling. 5. Aldreds Property Consultants and associated services may offer additional services to the prospective purchaser for which they will be entitled to receive a commission. Aldreds are pleased to be working with Mortgage Advice Bureau. They're an award-winning mortgage broker with over 1,400 advisers across the UK, and have access to over 12,000 mortgage products from over 90 lenders. Aldreds Estate Agents Ltd receive a commission of £200 on each completed case. Your home may be repossessed if you do not keep up repayments on your mortgage. There may be a fee for mortgage advice. The actual amount you pay will depend upon your circumstances. The fee is up to 1%, but a typical fee is 0.3% of the amount borrowed. Mortgage Advice Bureau is a trading name of Mortgage Seeker Limited which is an appointed representative of Mortgage Advice Bureau Limited and Mortgage Advice Bureau (Derby) Limited which are authorised and regulated by the Financial Conduct Authority. Mortgage Seeker Limited Registered Office: Lovewell Blake, Sixty Six North Quay, Great Yarmouth, Norfolk, NR30 1HE. Registered in England Number: 03721415. 6. Potential purchasers should check with their providers that the broadband and mobile phone coverage they would require is available.