

ANTHONY JAMES MANSEY

Residential Sales & Lettings



Percheron Close

Isleworth, TW7 6SS

£565,000

Freehold

Council Tax Band E

This delightful end-terrace house presents an ideal opportunity for a family home. The property boasts three well-proportioned bedrooms, providing ample space for comfortable living. The ground floor features a spacious lounge that overlooks a beautifully maintained rear garden. There is a separate kitchen and ground floor cloakroom with WC. Ascending to the first floor, you will find three inviting bedrooms, complemented by a family bathroom that caters to all your needs. Additionally, this property benefits from a dedicated car parking space, ensuring ease of access. The location is particularly appealing, as Isleworth offers a delightful selection of shops and cafes, creating a vibrant community atmosphere. For those commuting, Isleworth station provides excellent transport links to Waterloo, along with a hopper bus route to St Margaret's, making it a convenient choice for city dwellers. This charming home in a peaceful setting is not to be missed.

- Terrace home in the Malting Developments
- Three Bedrooms
- Dedicated car parking space
- Isleworth Station serving Waterloo
- Ground Floor Cloakroom with WC
- Excellent Local Schools
- Spacious lounge
- Hopper Bus routes to St Margaret's and Richmond
- Located opposite St Johns Gardens
- Chain Free

Viewing

Please contact our Sales Office on 020 8847 0488 if you wish to arrange a viewing appointment for this property or require further information.



3



1

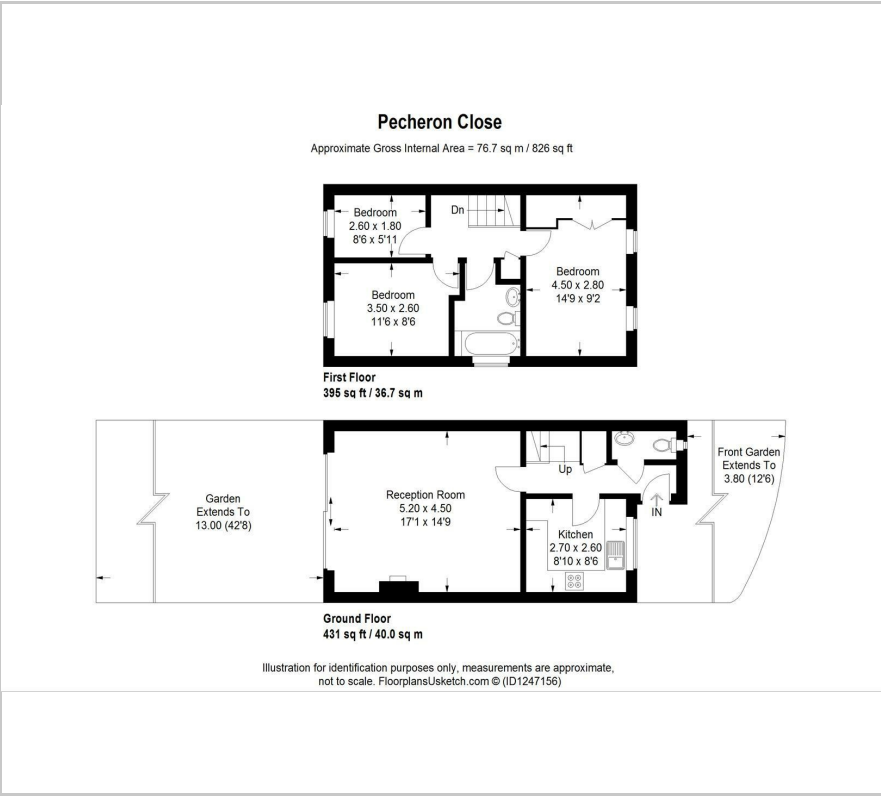


1



D

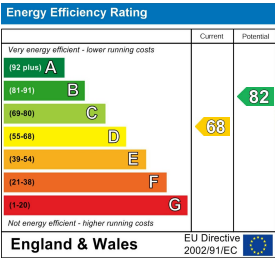
Floor Plan



Area Map



Energy Efficiency Graph



These particulars, whilst believed to be accurate are set out as a general outline only for guidance and do not constitute any part of an offer or contract. Intending purchasers should not rely on them as statements of representation of fact, but must satisfy themselves by inspection or otherwise as to their accuracy. No person in this firms employment has the authority to make or give any representation or warranty in respect of the property.