

ANTHONY JAMES MANSEY

Residential Sales & Lettings



Hepple Close

Isleworth, TW7 6AY

£1,400 Per Calendar Month

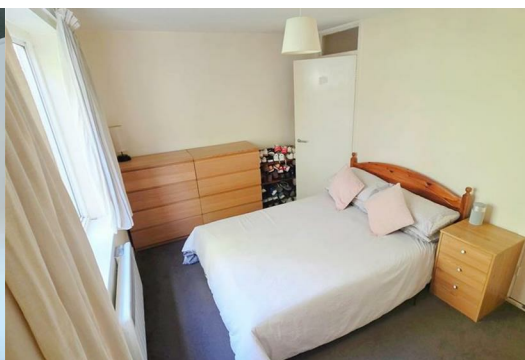
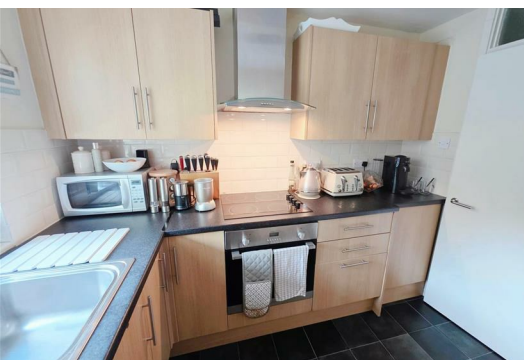


Welcome to this charming one-bedroom apartment located in the highly sought-after area of Hepple Close. This delightful property offers a perfect blend of comfort and convenience, making it an ideal choice for individuals or couples seeking a cosy home.

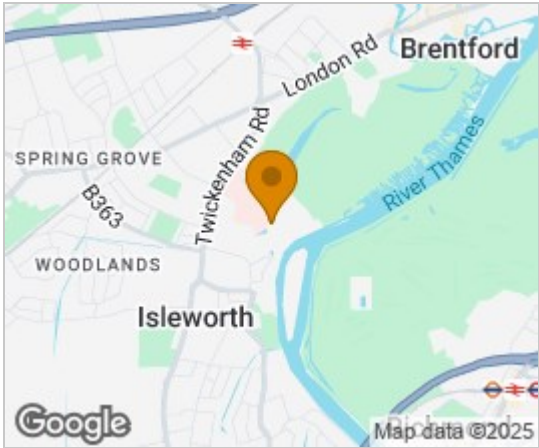
Upon entering the apartment, you will find a well-proportioned reception room that provides a warm and inviting space for relaxation and entertaining. The room is filled with natural light, creating a bright and airy atmosphere that enhances the overall appeal of the home.

The bedroom is a tranquil retreat, offering ample space for a double bed and additional furnishings. It is designed to provide a peaceful environment for rest and rejuvenation. The bathroom is modern and well-appointed, featuring essential amenities to cater to your daily needs.

Situated in a desirable location, this apartment benefits from easy access to local amenities, including shops, cafes, and parks, ensuring that everything you need is just a short stroll away. The surrounding area is known for its friendly community and excellent transport links, making it convenient for commuting to nearby towns and cities.



Area Map



Floor Plans



Energy Efficiency Graph

Energy Efficiency Rating		
	Current	Potential
Very energy efficient - lower running costs		
(92 plus) A		
(81-91) B		
(69-80) C		
(55-68) D		
(39-54) E		
(21-38) F		
(1-20) G		
Not energy efficient - higher running costs		
England & Wales		EU Directive 2002/91/EC

These particulars, whilst believed to be accurate are set out as a general outline only for guidance and do not constitute any part of an offer or contract. Intending purchasers should not rely on them as statements of representation of fact, but must satisfy themselves by inspection or otherwise as to their accuracy. No person in this firms employment has the authority to make or give any representation or warranty in respect of the property.