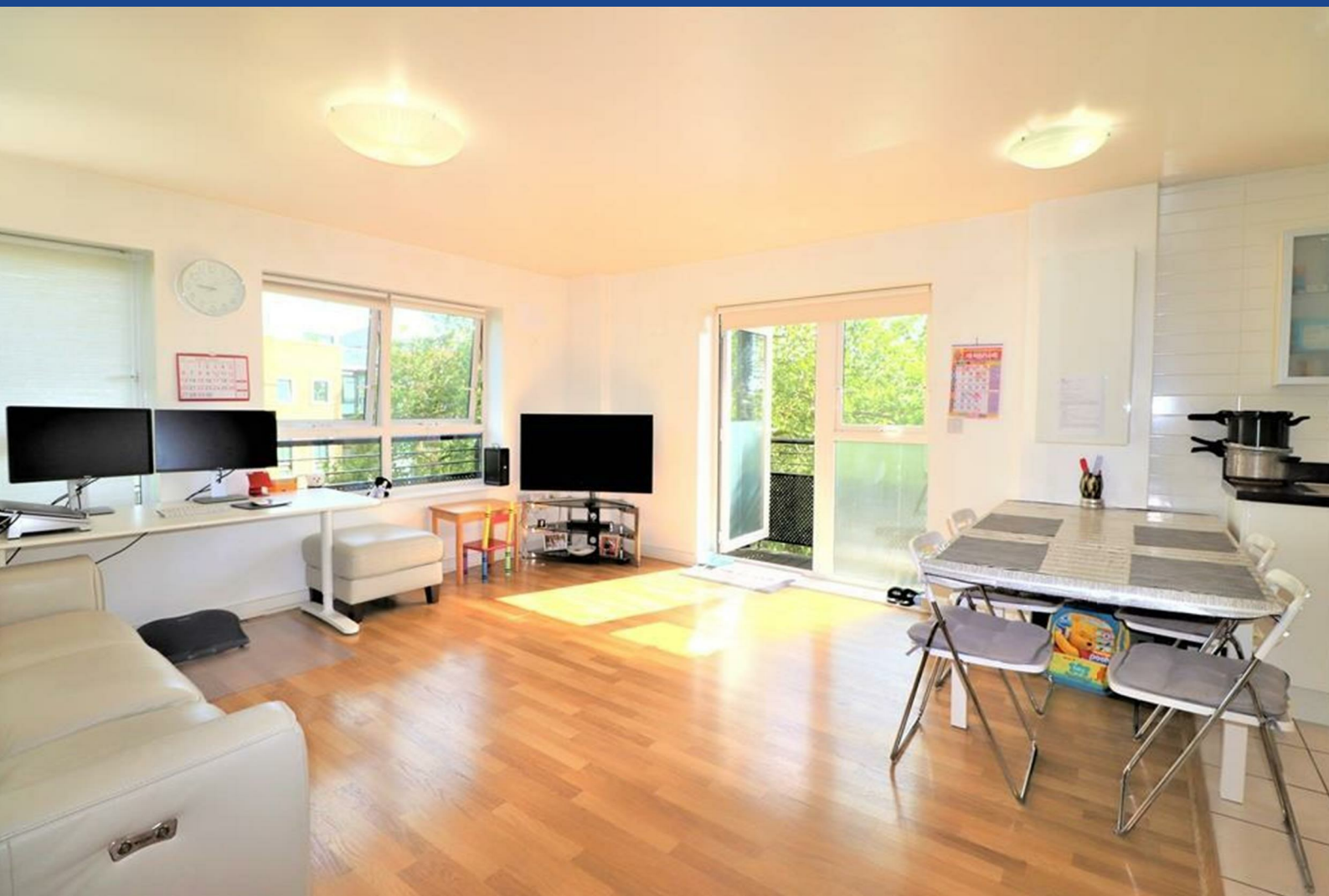


# ANTHONY JAMES MANSEY

Residential Sales & Lettings



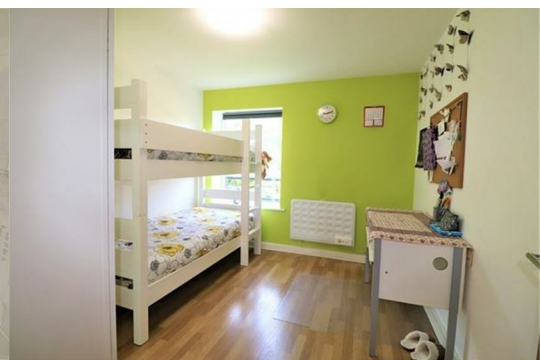
## Greenbank court Lanadron Close

Isleworth, TW7 5GA

£1,950 Per Calendar Month



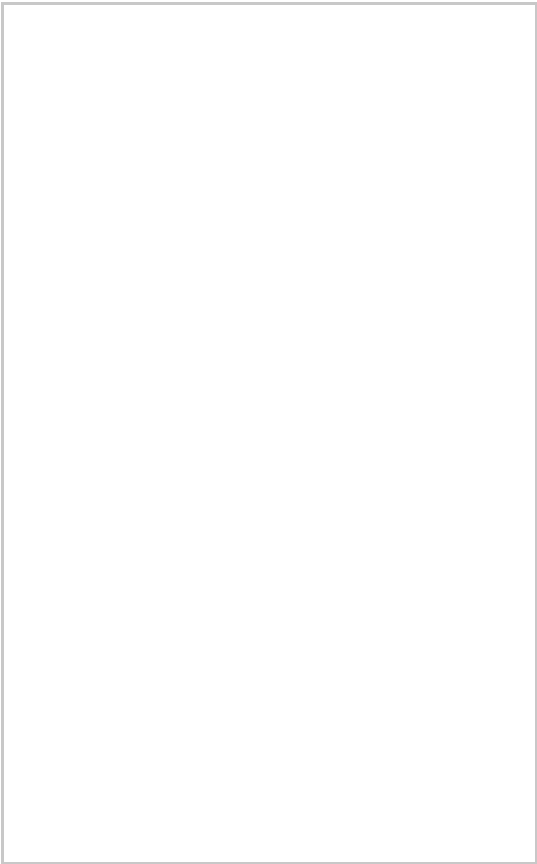
Introducing a wonderful bright two bedroom apartment. This property offers a fantastic open plan lounge and modern kitchen with door leading out to a large balcony, two double bedrooms one with ensuite, and a contemporary bathroom completes the property. Benefits include good storage, double glazed windows, entry phone system, the property also boasts the locality of central Isleworth by being within close walking distance to Isleworth train station. Parking available



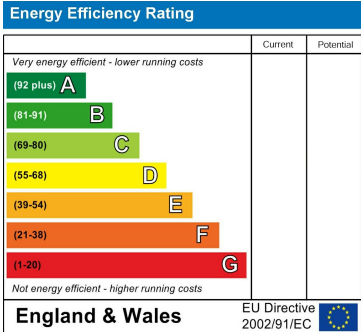
Area Map



Floor Plans



Energy Efficiency Graph



These particulars, whilst believed to be accurate are set out as a general outline only for guidance and do not constitute any part of an offer or contract. Intending purchasers should not rely on them as statements of representation of fact, but must satisfy themselves by inspection or otherwise as to their accuracy. No person in this firms employment has the authority to make or give any representation or warranty in respect of the property.