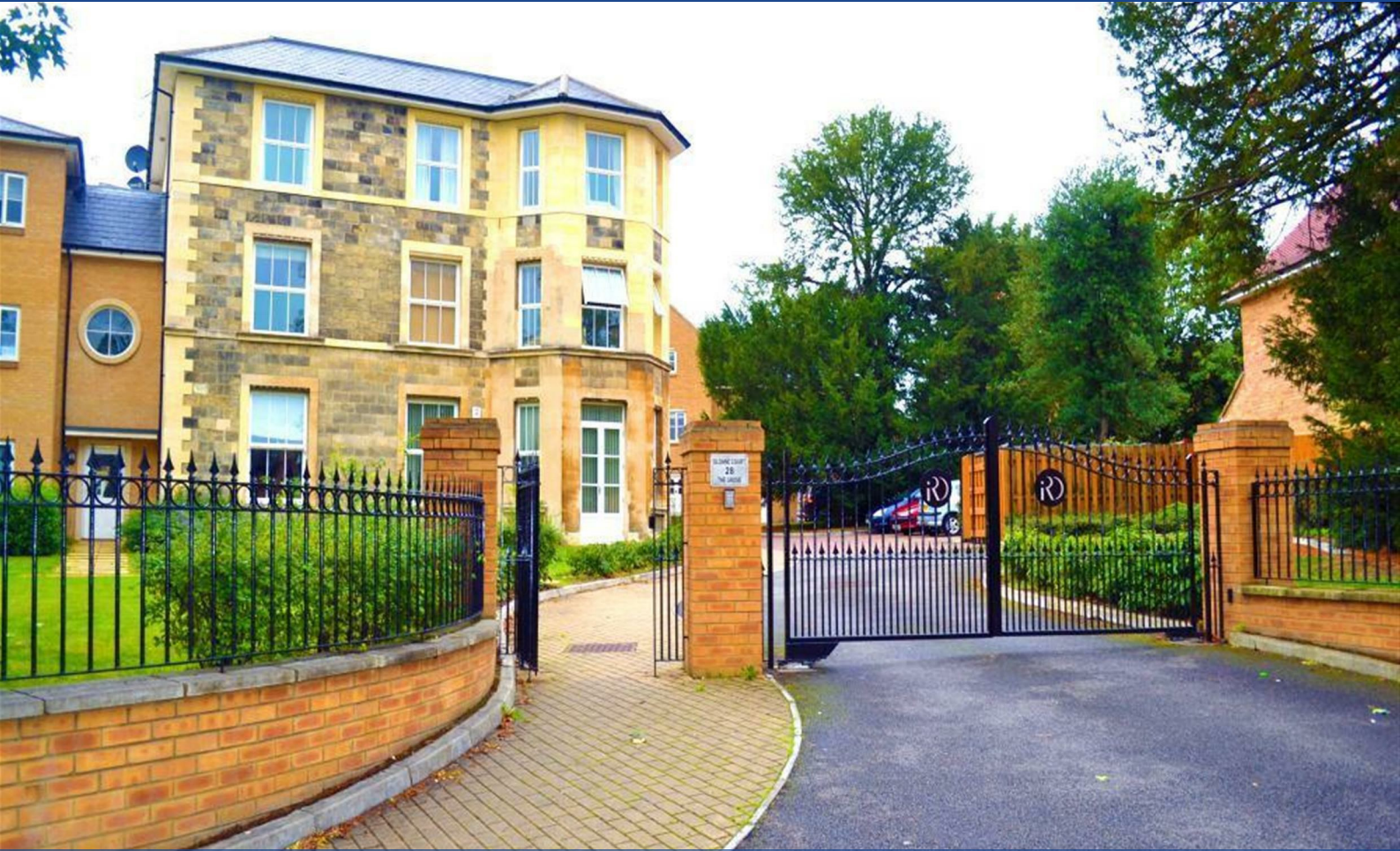


ANTHONY JAMES MANSEY

Residential Sales & Lettings



The Grove

Isleworth, TW7 4JU
£450,000
Leasehold
Council Tax Band E

This delightful first floor two-bedroom apartment presents an exceptional opportunity for comfortable living in one of Isleworth's prime locations. The property is situated within a secure gated development, ensuring both privacy and peace of mind. Upon entering, you will be greeted by a bright and spacious open-plan kitchen and reception area. The two generously sized bedrooms provide ample space and modern family bathroom. One of the standout features of this property is high ceilings and the allocated parking space, a rare find in such a sought-after area. This home is just a stone's throw away from local amenities, ensuring that everything you need is within easy reach. With Osterley Underground and Isleworth station nearby, commuting to central London or exploring the surrounding areas is both quick and convenient. No onward Chain.

Lease Term: 150 years from 1st June 2006 131 years remaining approximately
Service Charge: Currently advised by the vendor at £2,500.00 per annum
Ground Rent: Currently advised by the vendor at £125.00 per 6 months

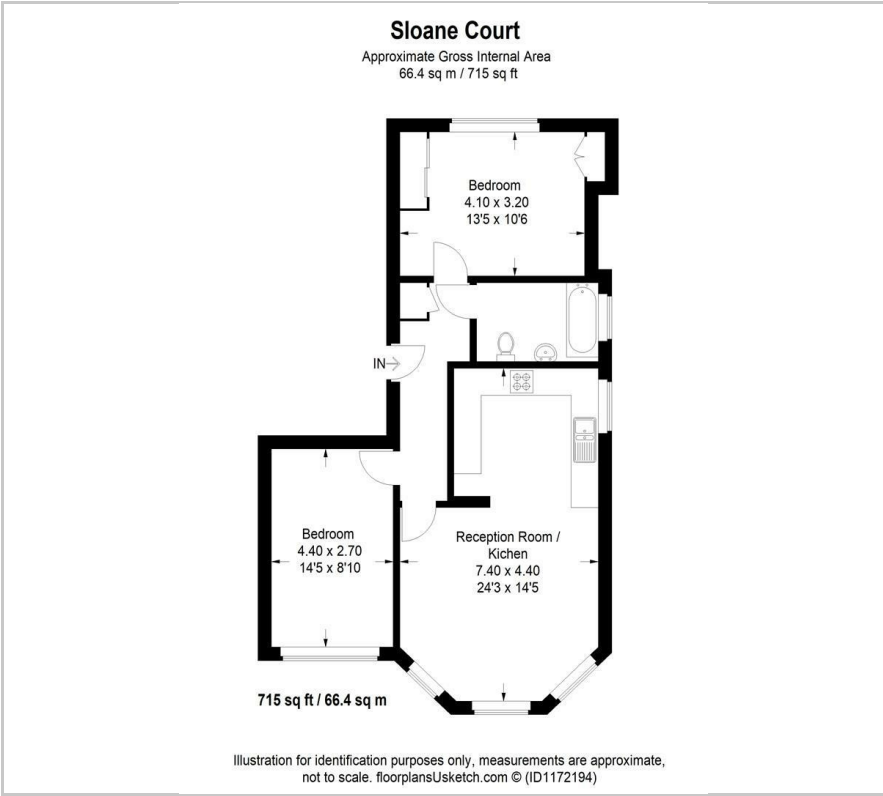
Viewing

Please contact our Sales Office on 020 8847 0488 if you wish to arrange a viewing appointment for this property or require further information.

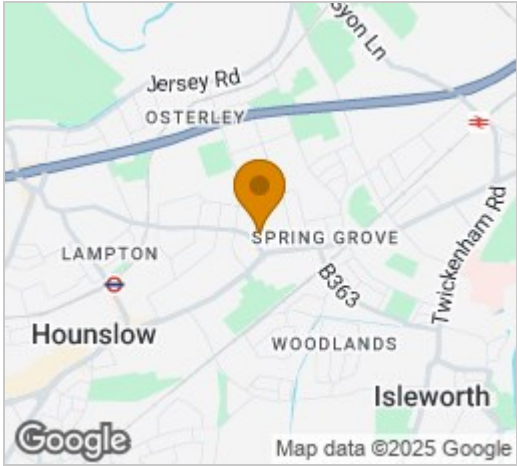
- A Delightful First Floor, Two Bedroom Apartment
- Situated in a Secure Gated Development
- Beautiful Open Plan Kitchen and Reception Area
- Two Good Sized Bedrooms
- Family Bathroom
- Maintained Communal Gardens
- Double Glazed Windows & Gas Central Heating
- No Onward Chain
- Allocated Parking Space
- Osterley Underground and Isleworth Station in Close Proximity



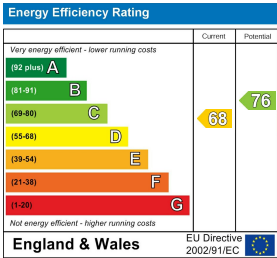
Floor Plan



Area Map



Energy Efficiency Graph



These particulars, whilst believed to be accurate are set out as a general outline only for guidance and do not constitute any part of an offer or contract. Intending purchasers should not rely on them as statements of representation of fact, but must satisfy themselves by inspection or otherwise as to their accuracy. No person in this firms employment has the authority to make or give any representation or warranty in respect of the property.