

ANTHONY JAMES MANSEY

Residential Sales & Lettings



Burton Gardens

Hounslow, TW5 0DF

£675,000

Situated in a Cul de sac off of the Great West Road and having easy access into Central London and Heathrow and the motor network via the A4.

A substantial 1930's built semi detached property beautifully presented by our vendor and comprising on the ground floor entrance porch, hallway, modern and stylish kitchen with built in appliances, dining room, extended reception room over garden and shower room with WC. The first floor provides three bedrooms, the two largest bedrooms with fitted wardrobes and a modern bathroom. Externally there is off street parking and shared drive to garage. The rear garden is outstanding, having been landscaped and affords a large brick built annex. This home is highly recommended by the owners sole agent.

Viewing

Please contact our Sales Office on 020 8847 0488 if you wish to arrange a viewing appointment for this property or require further information.

- A Substantial 1930's Built Semi Detached Property on a Impressive Plot
- Large and Modern Fitted Kitchen
- Dining Room
- Full Width Rear Extension with Views over the Garden
- Ground Floor WC & Shower
- Purpose Built Annex
- Shared Drive to Garage
- Three First Floor Bedrooms
- Modern Bathroom
- Easy Access to Heathrow, Central London, M4 & M25 via the A4



3



1

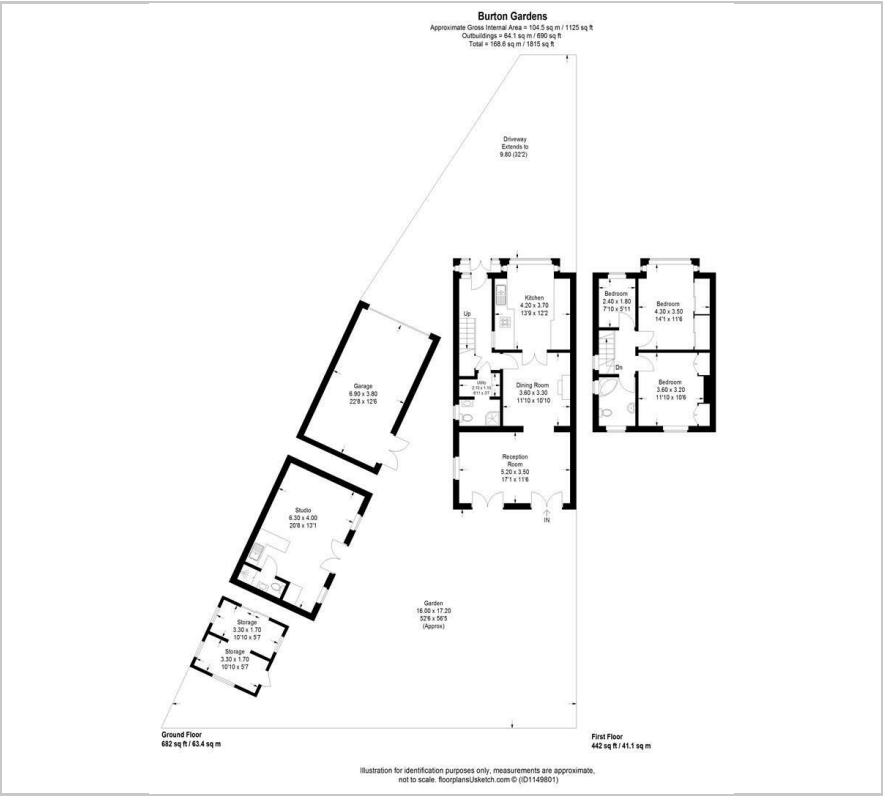


1

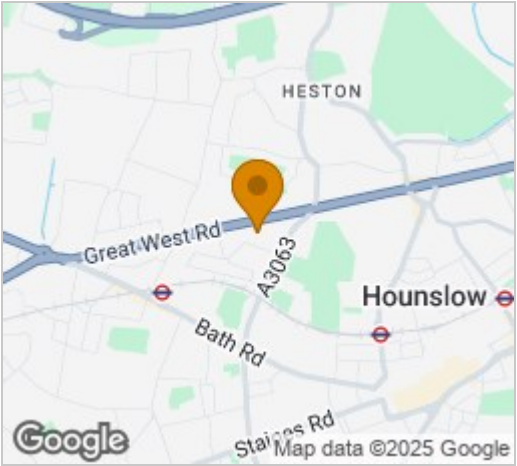


E

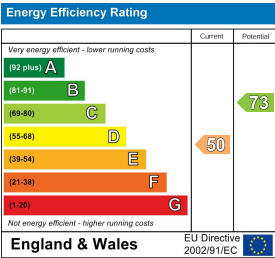
Floor Plan



Area Map



Energy Efficiency Graph



These particulars, whilst believed to be accurate are set out as a general outline only for guidance and do not constitute any part of an offer or contract. Intending purchasers should not rely on them as statements of representation of fact, but must satisfy themselves by inspection or otherwise as to their accuracy. No person in this firm's employment has the authority to make or give any representation or warranty in respect of the property.