

# ANTHONY JAMES MANSEY

Residential Sales & Lettings



## Newton Road

Isleworth, TW7 6QD

**£545,000**

Freehold

Council Tax Band D

Situated in a most pleasant residential area in the catchment of many good local schools. Isleworth centre is a short walk away and affords a variety of shops and cafes. Isleworth station serves Waterloo and the H37 hopper bus takes you to St Margarets and Richmond. This terraced home provides entrance hallway through lounge and kitchen on the ground floor. The first floor affords three bedrooms and bathroom. There is a private rear garden. This home is chain free and provides excellent scope to improve and extend subject to planning permission.

### Viewing

Please contact our Sales Office on 020 8847 0488 if you wish to arrange a viewing appointment for this property or require further information.

- Situated in a Most Pleasant Residential Road
- A Short Walk to Isleworth Centre with its Mainline Station
- A Terraced House
- Through Lounge
- Three Bedrooms
- First Floor Bathroom
- Gas Central Heating
- Chain Free
- Keys Available with the Owners Sale Agent
- Ample Scope to Improve and Extend STPP



3



1



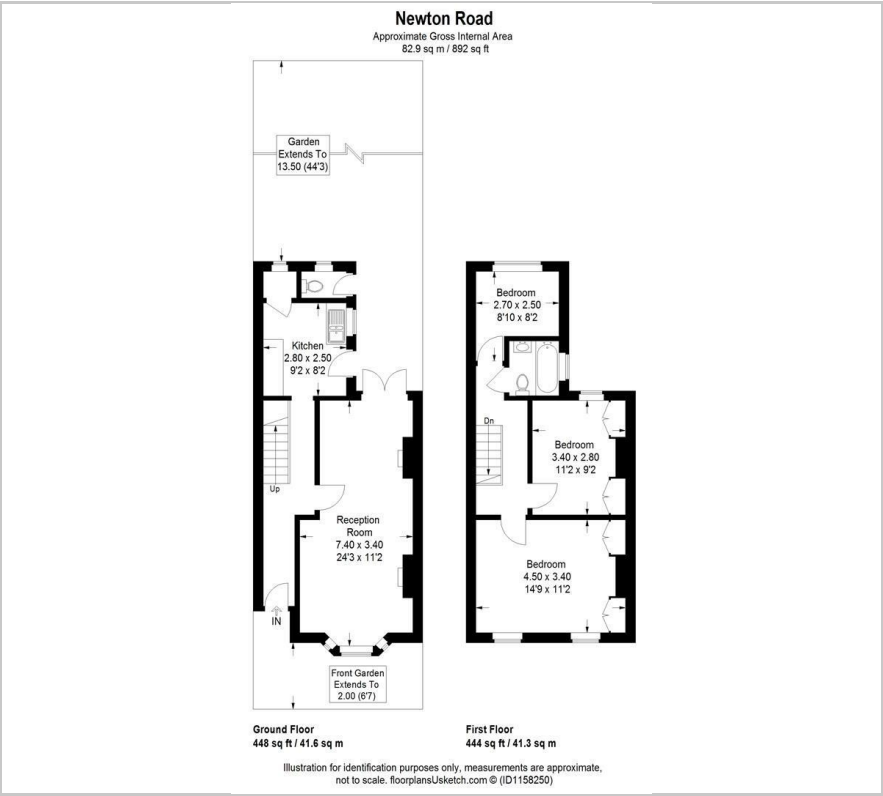
1



E



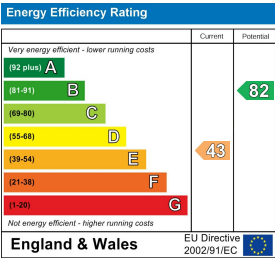
Floor Plan



Area Map



Energy Efficiency Graph



These particulars, whilst believed to be accurate are set out as a general outline only for guidance and do not constitute any part of an offer or contract. Intending purchasers should not rely on them as statements of representation of fact, but must satisfy themselves by inspection or otherwise as to their accuracy. No person in this firms employment has the authority to make or give any representation or warranty in respect of the property.