

# ANTHONY JAMES MANSEY

Residential Sales & Lettings



## Linkfield Road

Isleworth, TW7 6QH

**£474,995**

Freehold

Council Tax Band C

Nestled on the charming Linkfield Road in Isleworth, this delightful mid-terrace period home offers a perfect blend of modern living and classic character. Just a stone's throw from Isleworth Station, which provides convenient access to Waterloo, this property is ideally situated for commuters and those seeking a vibrant community atmosphere.

Upon entering, you are welcomed into a thoughtfully designed open-plan reception and kitchen area. The ground floor also features a well-appointed bathroom, complete with a separate shower, all finished to a high standard that reflects contemporary tastes while respecting the home's period charm.

The property boasts two comfortable bedrooms, providing ample space for a small family or professionals looking for a serene retreat. Outside, the landscaped garden is a true highlight, offering a well-kept outdoor space perfect for enjoying sunny days or hosting gatherings with friends and family.

Located in a desirable area, this property is surrounded by local amenities, parks, and excellent transport links, making it an ideal choice for those seeking both convenience and community. This home has been thoughtfully modernised throughout.

### Viewing

Please contact our Sales Office on 020 8847 0488 if you wish to arrange a viewing appointment for this property or require further information.

- Charming Mid Terraced Two Bedroom Period Home
- Open Plan Reception and Kitchen Area
- Ground Floor Bathroom Complete with a Separate Shower
- Two Bedrooms
- Beautiful Landscaped Garden
- Close Proximity to Isleworth Station Serving Waterloo
- Gas Central Heating
- Double & Tripple Glazed Windows
- Surrounded by Local Amenities, Parks and Excellent Transport Links
- Insulated Loft for Storage Space



2



1

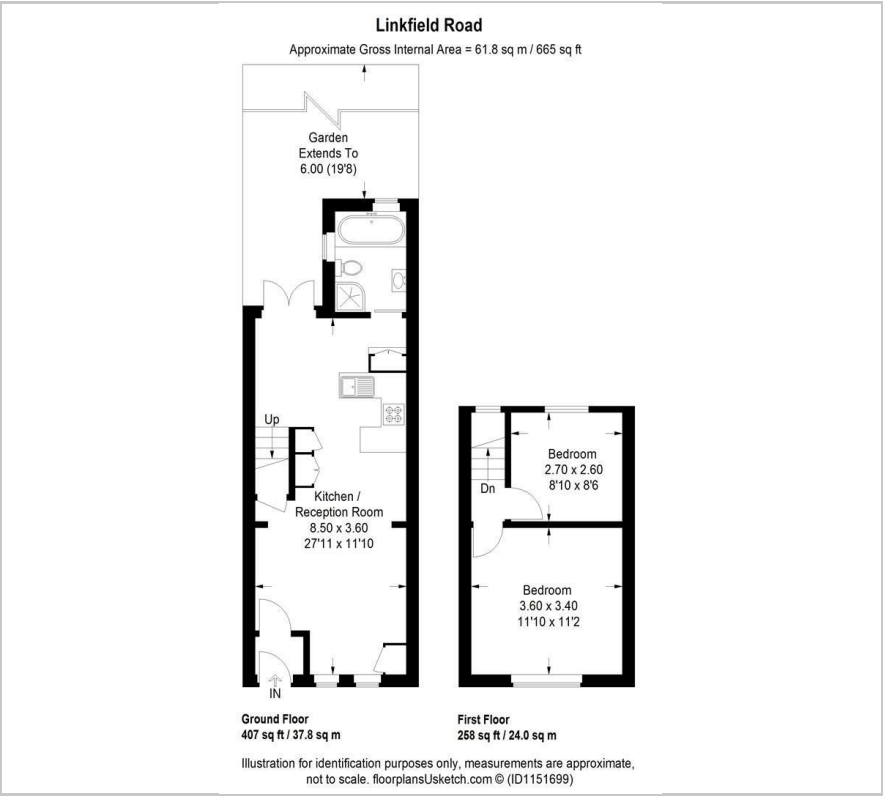


1



C

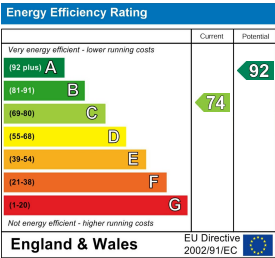
Floor Plan



Area Map



Energy Efficiency Graph



These particulars, whilst believed to be accurate are set out as a general outline only for guidance and do not constitute any part of an offer or contract. Intending purchasers should not rely on them as statements of representation of fact, but must satisfy themselves by inspection or otherwise as to their accuracy. No person in this firms employment has the authority to make or give any representation or warranty in respect of the property.