

# ANTHONY JAMES MANSER

Residential Sales & Lettings



## Woodland Gardens

Isleworth, TW7 6LW

### Price Guide £650,000

Situated in a delightful residential area with easy access to Isleworth with its excellent schools, shops and train station serving Waterloo. The local Hopper bus, the H37 regularly serves St Margarets and Richmond. This 1930's built semi detached home is on the inner circle of Woodland Gardens and backs onto a private recreation ground for the local residents which boasts its own tennis courts. Approached by a large front garden, with off street parking. The accommodation comprises entrance hallway through lounge and kitchen. The first floor provides three bedrooms and bathroom. There are gardens to the front, rear and side. There is ample scope to extend subject to planning permission. Please contact the owners agents to view this home.

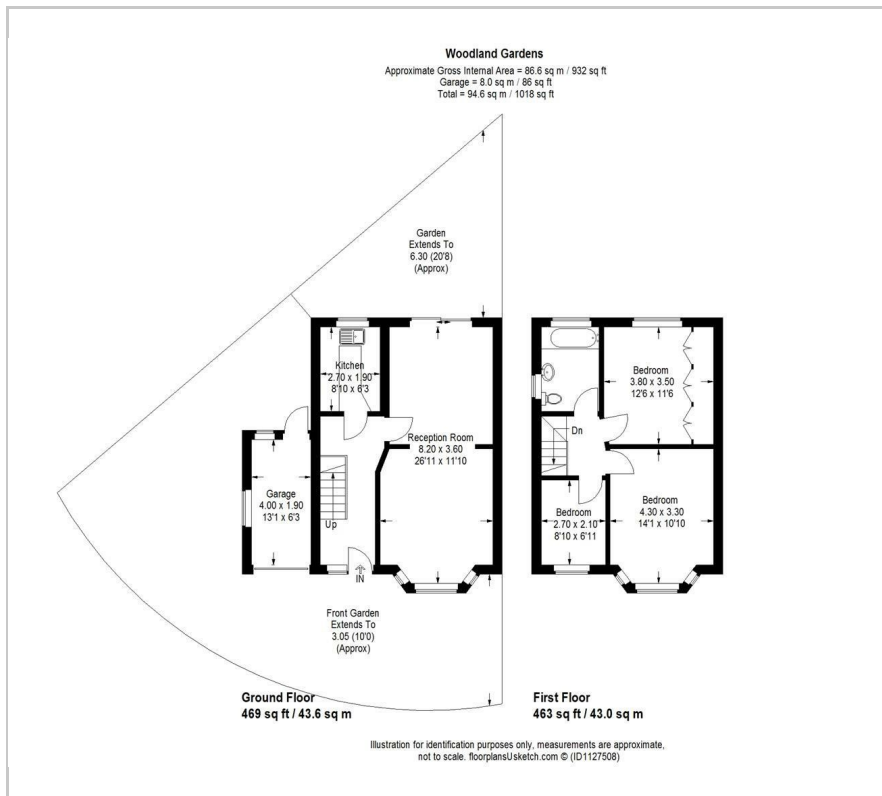
#### Viewing

Please contact our Sales Office on 020 8847 0488 if you wish to arrange a viewing appointment for this property or require further information.

- Situated on the Much Requested Residential Area of Woodland Gardens
- A 1930's Built Semi Detached House with own Drive and Off Street Parking
- Through Lounge with Parquet Flooring
- Three Bedrooms
- Access to a Private Recreation Ground with Tennis Courts
- Ample Scope to Further Extend Subject to Planning Permission
- Isleworth Town within a Short Distance and Featuring a Range of Shops and Cafes
- Isleworth Station Serving Waterloo



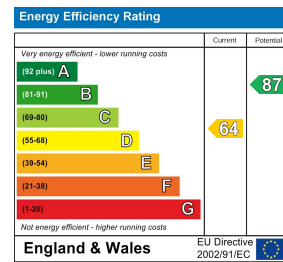
## Floor Plan



## Area Map



## Energy Efficiency Graph



These particulars, whilst believed to be accurate are set out as a general outline only for guidance and do not constitute any part of an offer or contract. Intending purchasers should not rely on them as statements of representation of fact, but must satisfy themselves by inspection or otherwise as to their accuracy. No person in this firm's employment has the authority to make or give any representation or warranty in respect of the property.