

ANTHONY JAMES MANSEY

Residential Sales & Lettings



11 Crawford Close

Isleworth, TW7 4DP

£650,000

Anthony James Manser are most pleased to present for sale this exceptionally well presented semi detached home. Affording on the ground floor a spacious living and dining area with open plan modern fitted kitchen with built in electric oven and gas hob. The first floor provides three bedrooms, the two largest with fitted wardrobes. The bathroom provides a white suite and shower bath. Both double glazed windows and gas central heating has been installed. Externally there is off street parking to the front of the property, to the rear the garden has been landscaped and features a raised patio and deck area, ideal for family parties. There is a large garden store with a brick built bar-b-que. Isleworth station serves Waterloo and the H37 takes you regularly into St Margarets and Richmond, Thornbury Park is within a short walking distance. There is also scope to extend subject to planning permission.

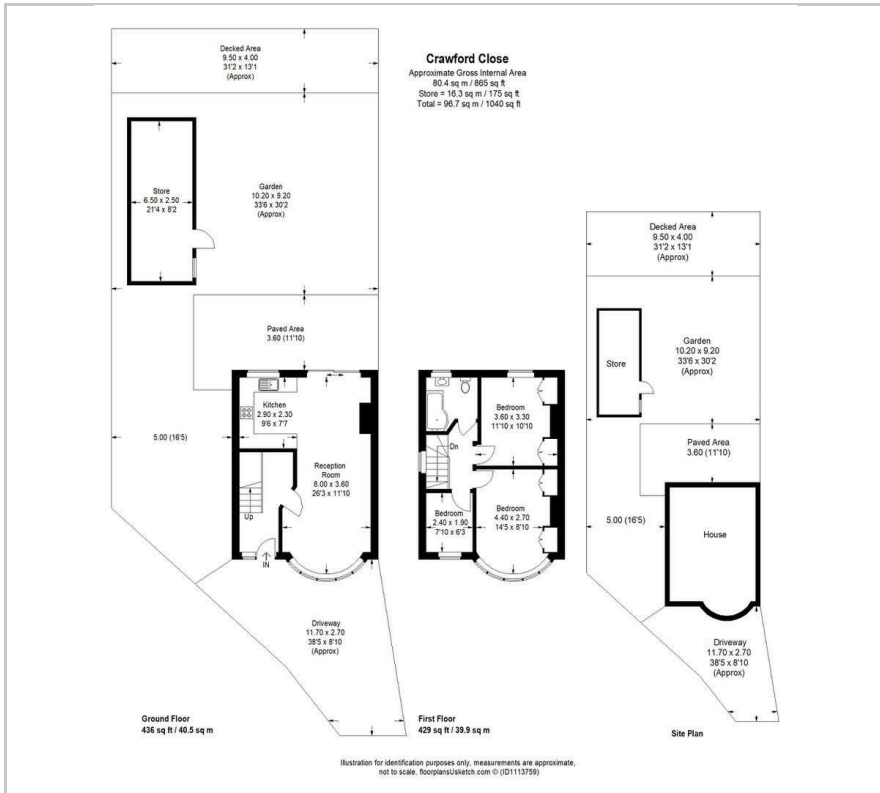
- An Exceptionally Well Presented Semi Detached Home with Three Bedrooms
- Situated in a Quiet Cul-de-sac.
- Landscaped Garden with Raised Deck and Patio Areas
- Spacious Living and Dining Area with Open Plan Modern Kitchen
- Fully Fitted Kitchen with Built in Electric Oven and Gas Hob
- Modern White Bathroom Suite with Shower Bath
- Double Glazed Windows and Gas Central Heating Installed
- Fitted Wardrobes in the Two Largest Bedrooms
- Off Street Car Parking
- Isleworth Station is within Walking Distance Serving Waterloo.

Viewing

Please contact our Sales Office on 020 8847 0488 if you wish to arrange a viewing appointment for this property or require further information.



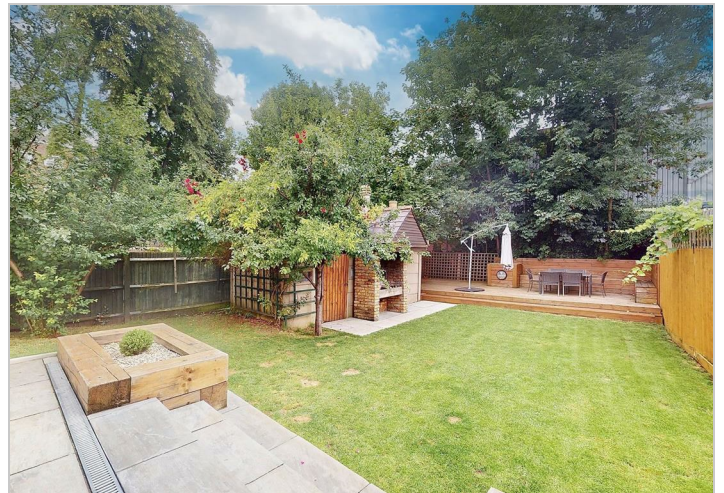
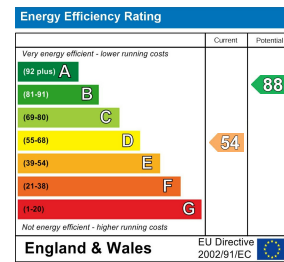
Floor Plan



Area Map



Energy Efficiency Graph



These particulars, whilst believed to be accurate are set out as a general outline only for guidance and do not constitute any part of an offer or contract. Intending purchasers should not rely on them as statements of representation of fact, but must satisfy themselves by inspection or otherwise as to their accuracy. No person in this firm's employment has the authority to make or give any representation or warranty in respect of the property.

Isleworth 22 St Johns Road, TW7 6NW

Tel: 020 8847 0488 Email: sales@anthonyjamesmanser.co.uk <https://www.anthonyjamesmanser.co.uk/>