

# ANTHONY JAMES MANSER

Residential Sales & Lettings



## Tolson Road

Isleworth, TW7 7AE

### Offers Over £535,000

Situated in this lovely old Isleworth road, within short walking distance of local shops and cafes. The River Thames with its riverside pubs only moments away. The H37 hopper bus regularly serving St Margaret's and high street Richmond. This home has been refurbished and comes complete with a new kitchen and bathroom, all fresh decoration and newly laid carpets. The accommodation comprises on the ground floor of an entrance hallway, two reception rooms, bathroom with walk in shower, kitchen and separate WC. The first floor affords two double bedrooms. There is a private patio and garden area to the rear.

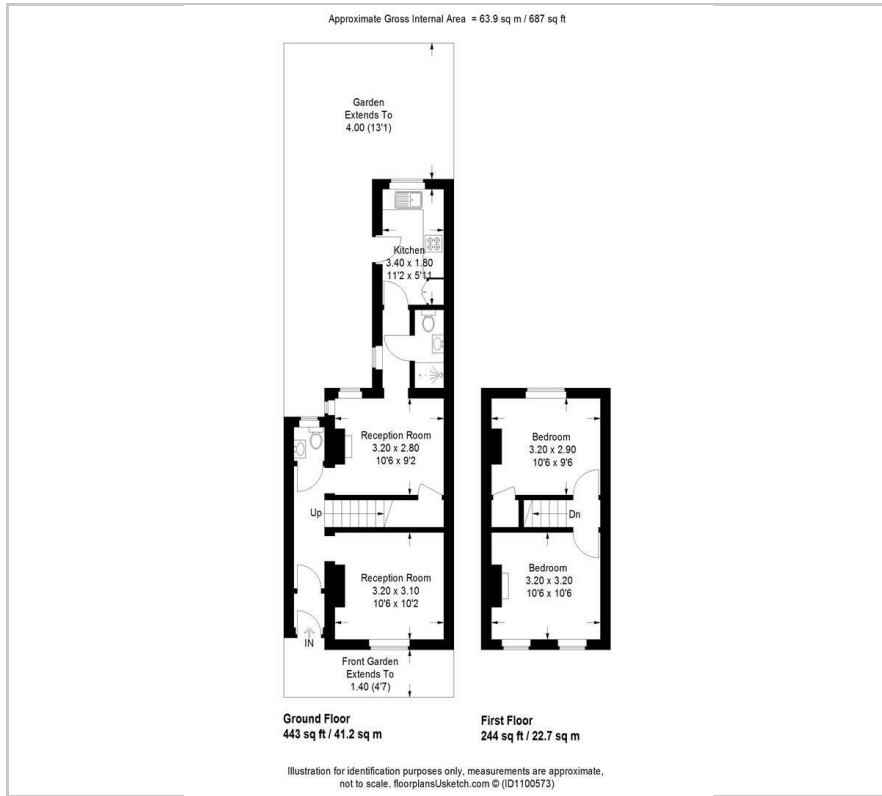
#### Viewing

Please contact our Sales Office on 020 8847 0488 if you wish to arrange a viewing appointment for this property or require further information.

- A newly refurbished terraced cottage
- Two double bedrooms
- Private rear garden
- New kitchen and bathroom with walk in shower
- Freshly laid carpets
- Vacant with no chain
- Gas Central Heating
- Short Walk to Shops and Cafes
- H37 Bus Route to St Margarets
- Keys available to view now



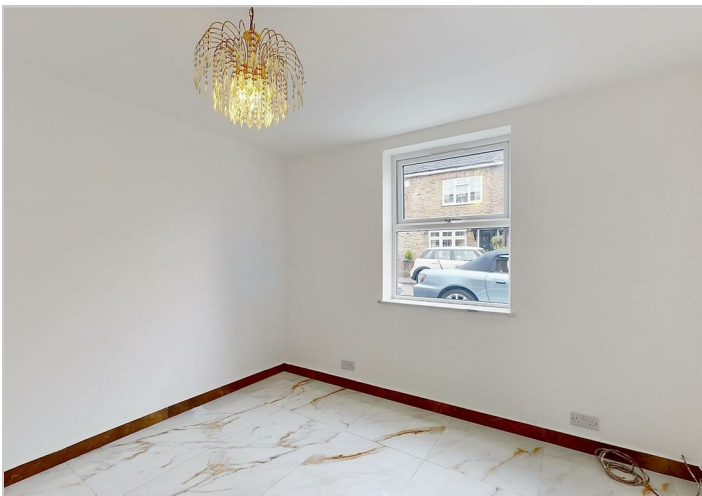
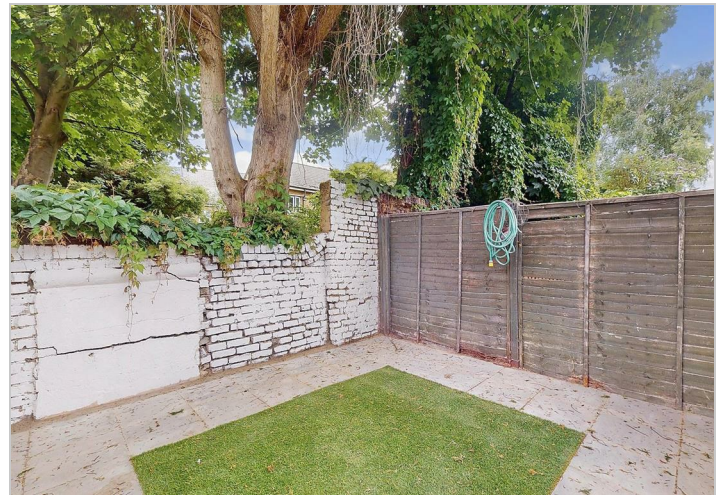
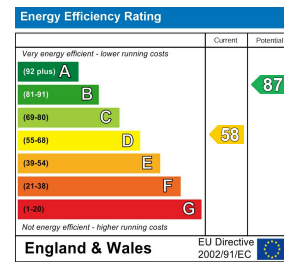
# Floor Plan



# Area Map



# Energy Efficiency Graph



These particulars, whilst believed to be accurate are set out as a general outline only for guidance and do not constitute any part of an offer or contract. Intending purchasers should not rely on them as statements of representation of fact, but must satisfy themselves by inspection or otherwise as to their accuracy. No person in this firm's employment has the authority to make or give any representation or warranty in respect of the property.

Isleworth 22 St Johns Road, TW7 6NW

Tel: 020 8847 0488 Email: [sales@anthonyjamesmanser.co.uk](mailto:sales@anthonyjamesmanser.co.uk) <https://www.anthonyjamesmanser.co.uk/>