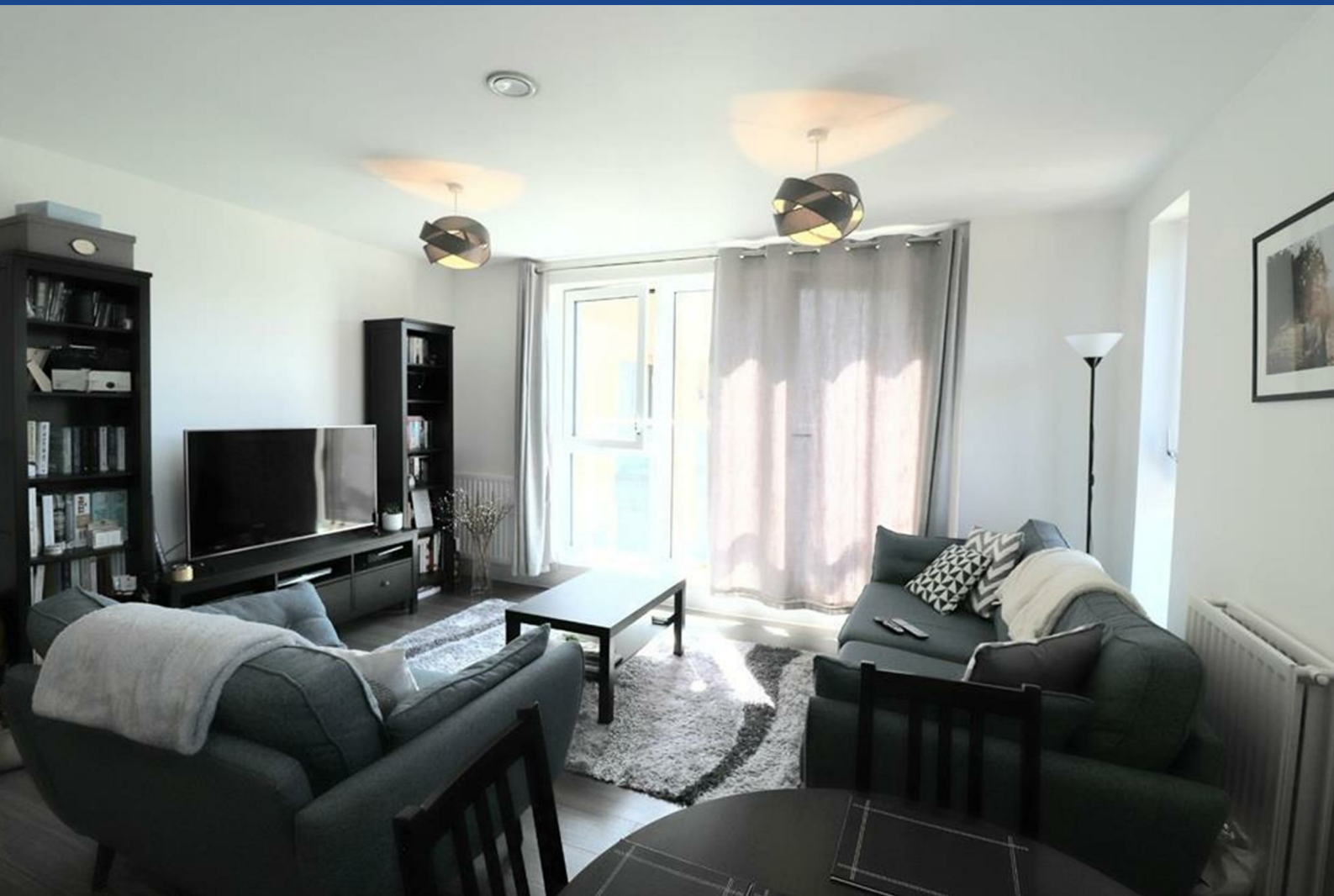


# ANTHONY JAMES MANSEY

Residential Sales & Lettings



## Flat 17 565 London Road

565 London Road, ISLEWORTH, TW7 4FA

£1,600 Per Calendar Month



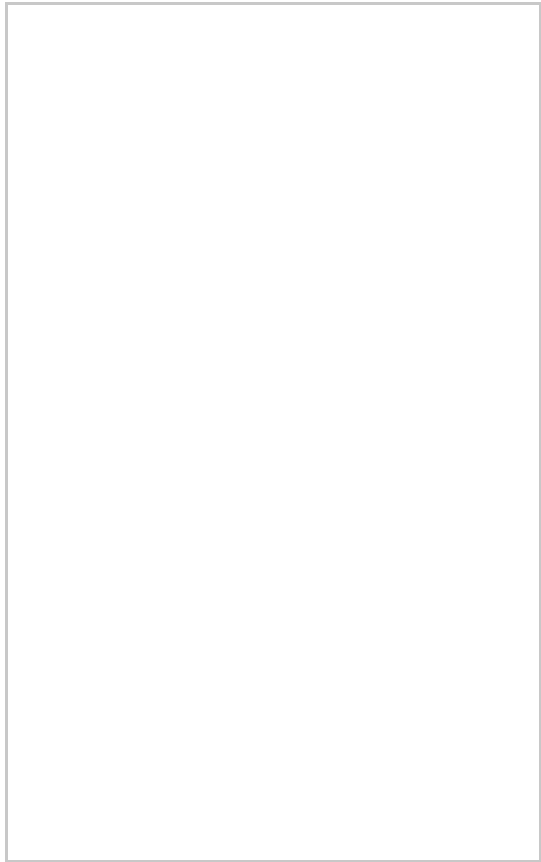
A stunning one bedroom apartment situated within a modern development, set in beautifully planted communal gardens, close to the shops and cafes of Isleworth Village. The property offers spacious and bright accommodation, comprising a large lounge and dining area with fully fitted kitchen with integrated appliances, generous master bedroom with full height wardrobes and a modern bathroom. Benefits include double glazing, gas central heating, audio/visual entry phone system and allocated parking. With the River Thames and Syon and Osterley Parks in the vicinity this property is close to local schools, shops, amenities and Isleworth BR station (serving London Waterloo).




## Area Map



## Floor Plans



## Energy Efficiency Graph

Energy Efficiency Rating		Current	Potential
<i>Very energy efficient - lower running costs</i>			
(92 plus) <b>A</b>			
(81-91) <b>B</b>			
(69-80) <b>C</b>			
(55-68) <b>D</b>			
(39-54) <b>E</b>			
(21-38) <b>F</b>			
(1-20) <b>G</b>			
<i>Not energy efficient - higher running costs</i>			
<b>England &amp; Wales</b>		EU Directive 2002/91/EC 	

These particulars, whilst believed to be accurate are set out as a general outline only for guidance and do not constitute any part of an offer or contract. Intending purchasers should not rely on them as statements of representation of fact, but must satisfy themselves by inspection or otherwise as to their accuracy. No person in this firm's employment has the authority to make or give any representation or warranty in respect of the property.