

ANTHONY JAMES MANSER

Residential Sales & Lettings



67 Otterburn Gardens

Isleworth, TW7 5JQ

£1,750 Per Month

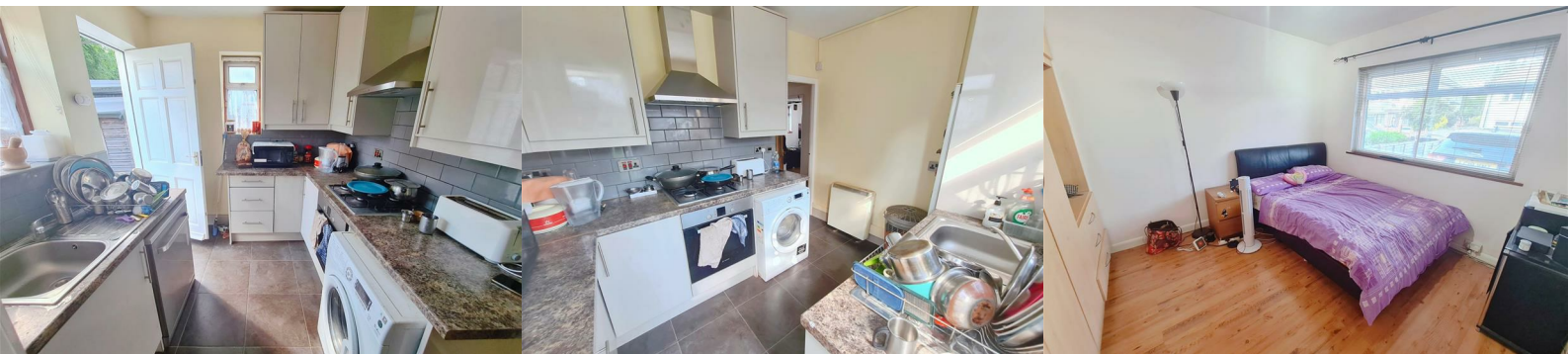


Welcome to this charming ground floor maisonette located in the sought-after Otterburn Gardens, Isleworth. This delightful property boasts a cosy reception room, perfect for relaxing or entertaining guests. With two generously sized double bedrooms, there is ample space for a growing family or for those who enjoy having a guest room or home office.

The property features a well-maintained bathroom, ensuring convenience and comfort for the residents. Additionally, the front garden adds a touch of greenery and provides a lovely outdoor space to enjoy a morning coffee or evening sunset.

One of the standout features of this maisonette is its excellent location. Situated in Isleworth, residents can enjoy the best of both worlds - a peaceful residential area with easy access to local amenities, schools, and transport links.

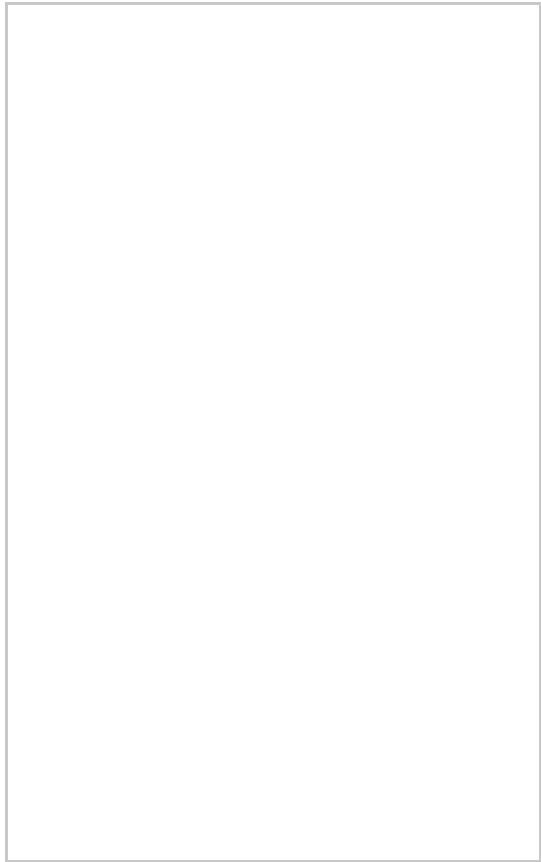
Parking is made easy with an off street space for one vehicle, for added convenience. Don't miss out on the chance to make this maisonette your new home!




Area Map



Floor Plans



Energy Efficiency Graph

Energy Efficiency Rating		Current	Potential
<i>Very energy efficient - lower running costs</i>			
(92 plus) A			
(81-91) B			
(69-80) C			
(55-68) D			
(39-54) E			
(21-38) F			
(1-20) G			
<i>Not energy efficient - higher running costs</i>			
England & Wales		EU Directive 2002/91/EC 	

These particulars, whilst believed to be accurate are set out as a general outline only for guidance and do not constitute any part of an offer or contract. Intending purchasers should not rely on them as statements of representation of fact, but must satisfy themselves by inspection or otherwise as to their accuracy. No person in this firm's employment has the authority to make or give any representation or warranty in respect of the property.