

# ANTHONY JAMES MANSEY

Residential Sales & Lettings



## Amhurst Gardens

Isleworth, TW7 6AJ

£680,000

Anthony James Manser are very pleased to present this 1930's semi detached property to the market. In a excellent location close to a number of local schools. Syon Park and house and the River Thames are all within walking distance. Isleworth station serves Waterloo and the bus routes will take you into Brentford, Richmond and Twickenham. The accommodation comprises on the ground floor of two receptions and kitchen, the first floor provides three bedrooms and family bathroom. The top floor affords a large principal bedroom with en suite. There is a private rear garden with shared side access to a garage. For an appointment to view please contact the owners sole agent.

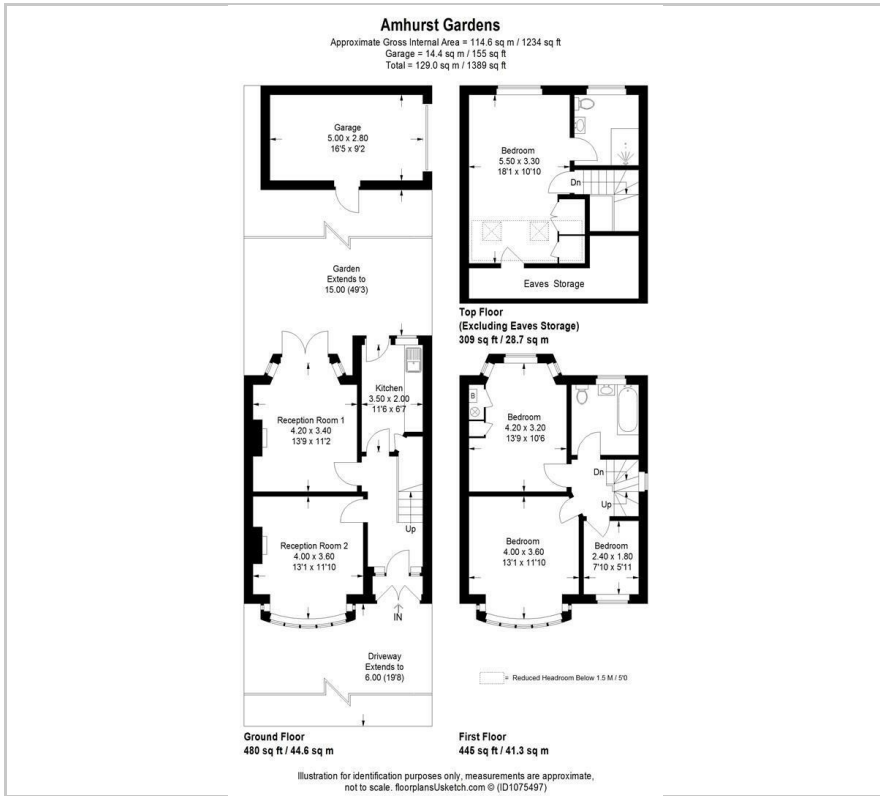
### Viewing

Please contact our Sales Office on 020 8847 0488 if you wish to arrange a viewing appointment for this property or require further information.

- A 1930's Built Semi Detached Property in Excellent Location
- Two Individual Reception Rooms
- Four Bedrooms
- Loft Converted to Form the Fourth Bedroom and En Suite.
- Family Bathroom
- Private Rear Garden
- Garage Accessed by Shared Driveway
- Within Close Proximity of a Range of Local Schools
- Isleworth Station Serving Waterloo
- Walkable to Syon House, Gardens and The River Thames



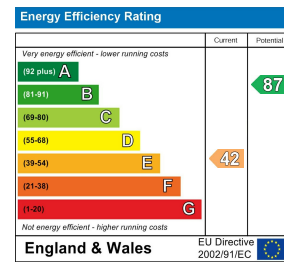
## Floor Plan



## Area Map



## Energy Efficiency Graph



These particulars, whilst believed to be accurate are set out as a general outline only for guidance and do not constitute any part of an offer or contract. Intending purchasers should not rely on them as statements of representation of fact, but must satisfy themselves by inspection or otherwise as to their accuracy. No person in this firm's employment has the authority to make or give any representation or warranty in respect of the property.