

ANTHONY JAMES MANSER

Residential Sales & Lettings



292 Worton Road

Isleworth, TW7 6EL

£440,000

PRICES FROM: £265,000 TO £500,000

A super selection of 10 apartments for sale over first and second floors. A choice of layouts and bedrooms from spacious studios, one bedroom and two bedroom apartments. Car parking has been allocated to units 1,4,5,6,9 and 10. Situated in an excellent location close to Redlees Park. Isleworth station regularly serves Waterloo and buses serve Twickenham, St Margarets and Richmond. An ideal opportunity for first time buyers and investors.

Viewing

Please contact our Sales Office on 020 8847 0488 if you wish to arrange a viewing appointment for this property or require further information.

- A Select Development of Converted Apartments
- A Choice of Studio, One and Two Bedroom Units
- Excellent Location Close to Redlees Park
- Neutral and Contemporary Interiors
- Modern Kitchens with Integrated Appliances
- No Stamp Duty for First Time Buyers on the first £425,000
- Isleworth Station Serving Waterloo



2



2

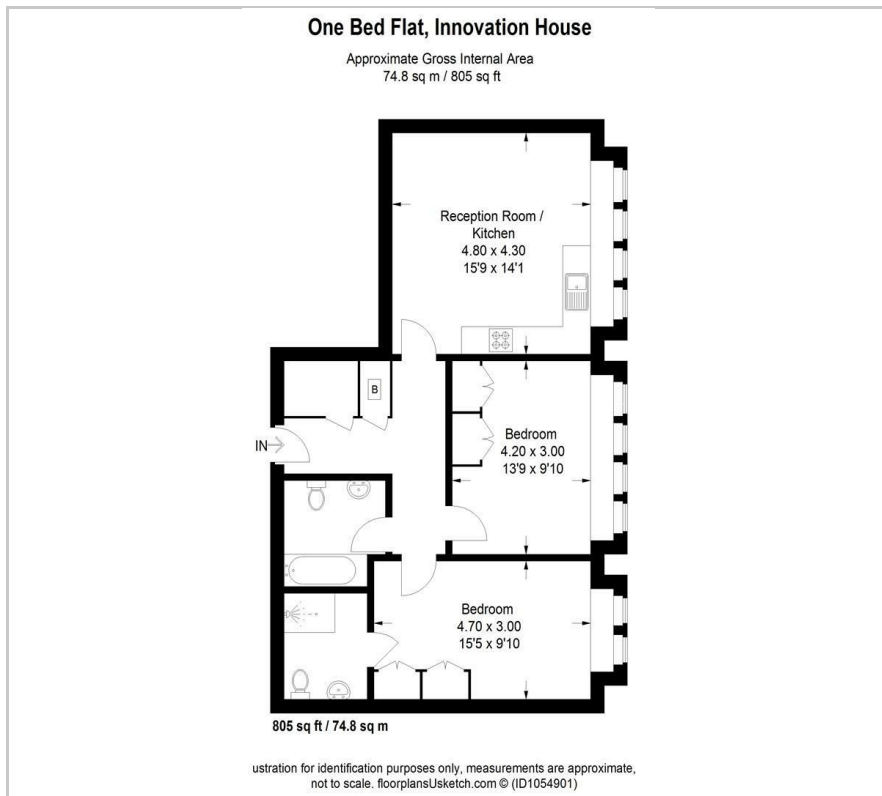


1



E

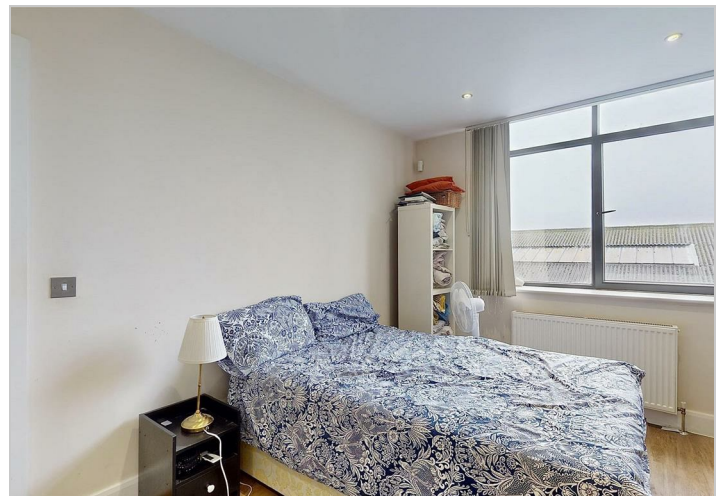
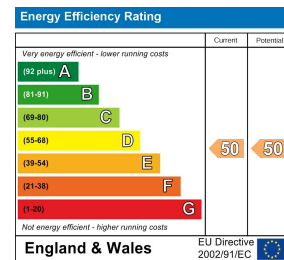
Floor Plan



Area Map



Energy Efficiency Graph



These particulars, whilst believed to be accurate are set out as a general outline only for guidance and do not constitute any part of an offer or contract. Intending purchasers should not rely on them as statements of representation of fact, but must satisfy themselves by inspection or otherwise as to their accuracy. No person in this firm's employment has the authority to make or give any representation or warranty in respect of the property.