

ANTHONY JAMES MANSER

Residential Sales & Lettings



23 Redfern Avenue

Whitton Hounslow, TW4 5NA

£350,000

A beautifully presented first floor maisonette with its own private rear garden and situated in a quiet residential road.

This bright and spacious first-floor property has been re-decorated throughout and offers two double bedrooms, a living room with bay window, Family bathroom, and a modern kitchen. This home also benefits from gas central heating (not tested) and double glazing.

Redfern Avenue is located on the Whitton borders with Hounslow and Whitton town centres' both within easy driving distance, as is Heathrow Airport, the A316 which also offers good access to Richmond and central London in one direction and the M25, M3 and the southwest in the other.

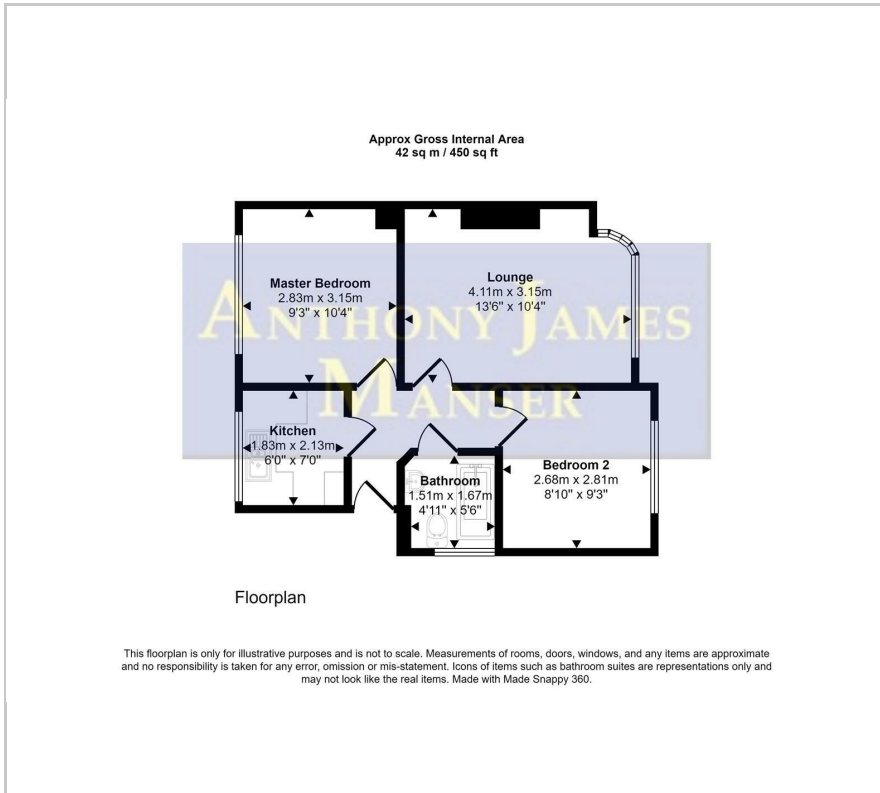
- Vacant Possession
- No Onward Chain
- LONG LEASE
- 2 Double Bedrooms
- Private Rear Garden
- Cul-de-sac location
- Gas central heating (not tested).

Viewing

Please contact our Sales Office on 020 8847 0488 if you wish to arrange a viewing appointment for this property or require further information.



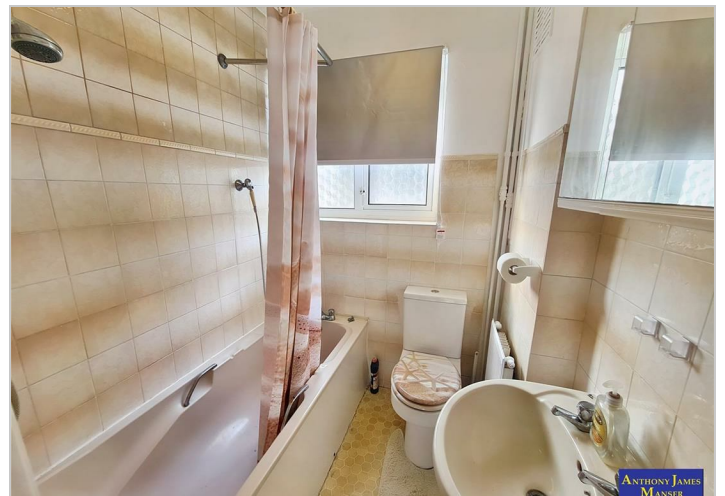
Floor Plan



Area Map



Energy Efficiency Graph



These particulars, whilst believed to be accurate are set out as a general outline only for guidance and do not constitute any part of an offer or contract. Intending purchasers should not rely on them as statements of representation of fact, but must satisfy themselves by inspection or otherwise as to their accuracy. No person in this firm's employment has the authority to make or give any representation or warranty in respect of the property.