

ANTHONY JAMES MANSER

Residential Sales & Lettings



51 Manor House Way

Isleworth, TW7 6BJ

£400,000

Situated in a delightful residential area, within close proximity of The River Thames and the beautiful grounds of Syon House and Syon Park. The H37 hopper bus takes you to St Margaret's and Richmond on a regular basis. There are many cafe's and restaurants in short distance from this apartment. This first floor (top floor) home is of excellent size and is approached via entry phone system and carpeted hallways. The accommodation comprises entrance hallway with door to a double aspect lounge and dining area, the kitchen is fully fitted with a built in extractor, oven and hob. The bathroom is very modern with a large walk in shower. There are two double bedrooms. The apartment is fitted with double glazed windows and gas central heating (not tested). Externally there is a garage with up and over door and mezzanine storage area. There are communal ground within a courtyard setting with seating area. Please contact the owners sole agents to view.

Lease: 215 years from 1986 approx. 178 years remaining.

Ground Rent: £100 per annum

Service Charge currently: £910.80 per 6 months.

- A Superbly Located first Floor Purpose Built Apartment
- Spacious Reception and Dining Area
- Two Generous Bedrooms
- Beautifully Appointed Bathroom with large Walk in Shower
- Particularly Light Apartment with Double Aspect Windows
- Gas Central Heating Installed (not tested)
- Communal Courtyard Garden & Seating Area for the Residents
- Garage with Storage Area
- H37 Hopper Bus to St Margaret's & Richmond

Viewing

Please contact our Sales Office on 020 8847 0488 if you wish to arrange a viewing appointment for this property or require further information.



2



1

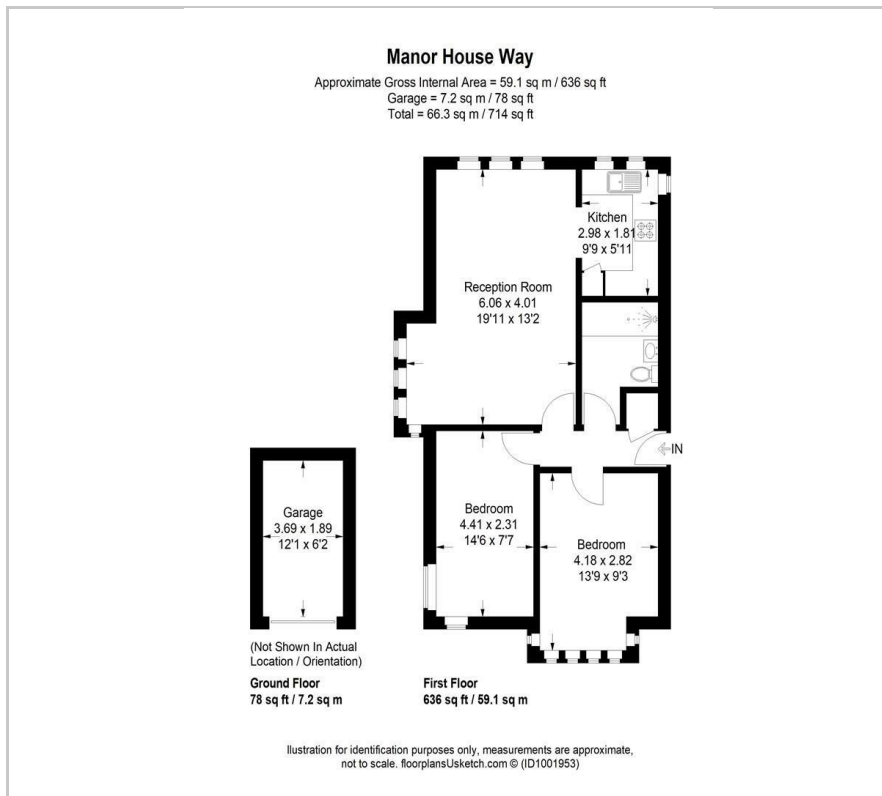


1

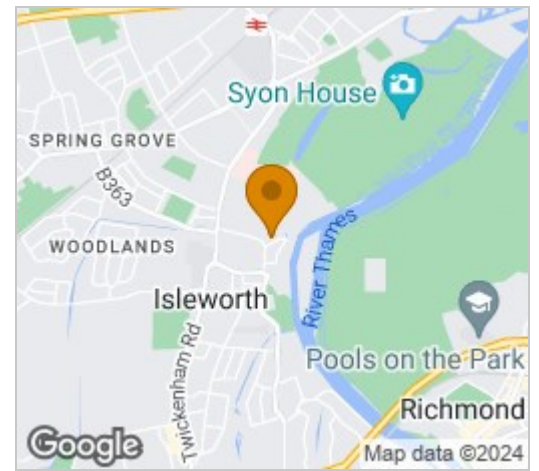


C

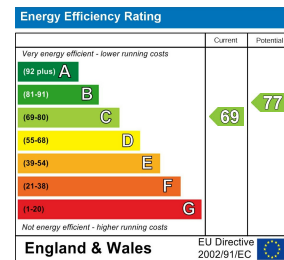
Floor Plan



Area Map



Energy Efficiency Graph



These particulars, whilst believed to be accurate are set out as a general outline only for guidance and do not constitute any part of an offer or contract. Intending purchasers should not rely on them as statements of representation of fact, but must satisfy themselves by inspection or otherwise as to their accuracy. No person in this firm's employment has the authority to make or give any representation or warranty in respect of the property.

Isleworth 22 St Johns Road, TW7 6NW

Tel: 020 8847 0488 Email: sales@anthonyjamesmanser.co.uk <https://www.anthonyjamesmanser.co.uk/>