



From £146,500

Church Street, Maryport, CA15 6AH

A collection of just five modern townhouses nestled in the coastal town of Maryport



GRISDALES

LAND & NEW HOMES



The Development

Welcome to Church Street, an exciting new development of just five modern townhouses nestled in the coastal town of Maryport. These homes offer a perfect blend of modern living and seaside charm, featuring one two-bedroom townhouse and four three-bedroom townhouses.

Crafted with meticulous attention to detail, each home boasts energy-efficient features, including an air source heat pump system. Inside, discover family-friendly layouts with open plan living dining spaces, family bathrooms, and downstairs WC, and for the three-bedroom homes, a third-floor master suite with en suite and space for walk-in wardrobes.

Step outside to your private rear yard, a peaceful retreat seamlessly connected to the open plan living area through French doors. Everything you need is at your doorstep, with town centre amenities and the stunning coastline just moments away. Plus, with an electric bike charging point, you're ready for eco-friendly adventures at a moment's notice.

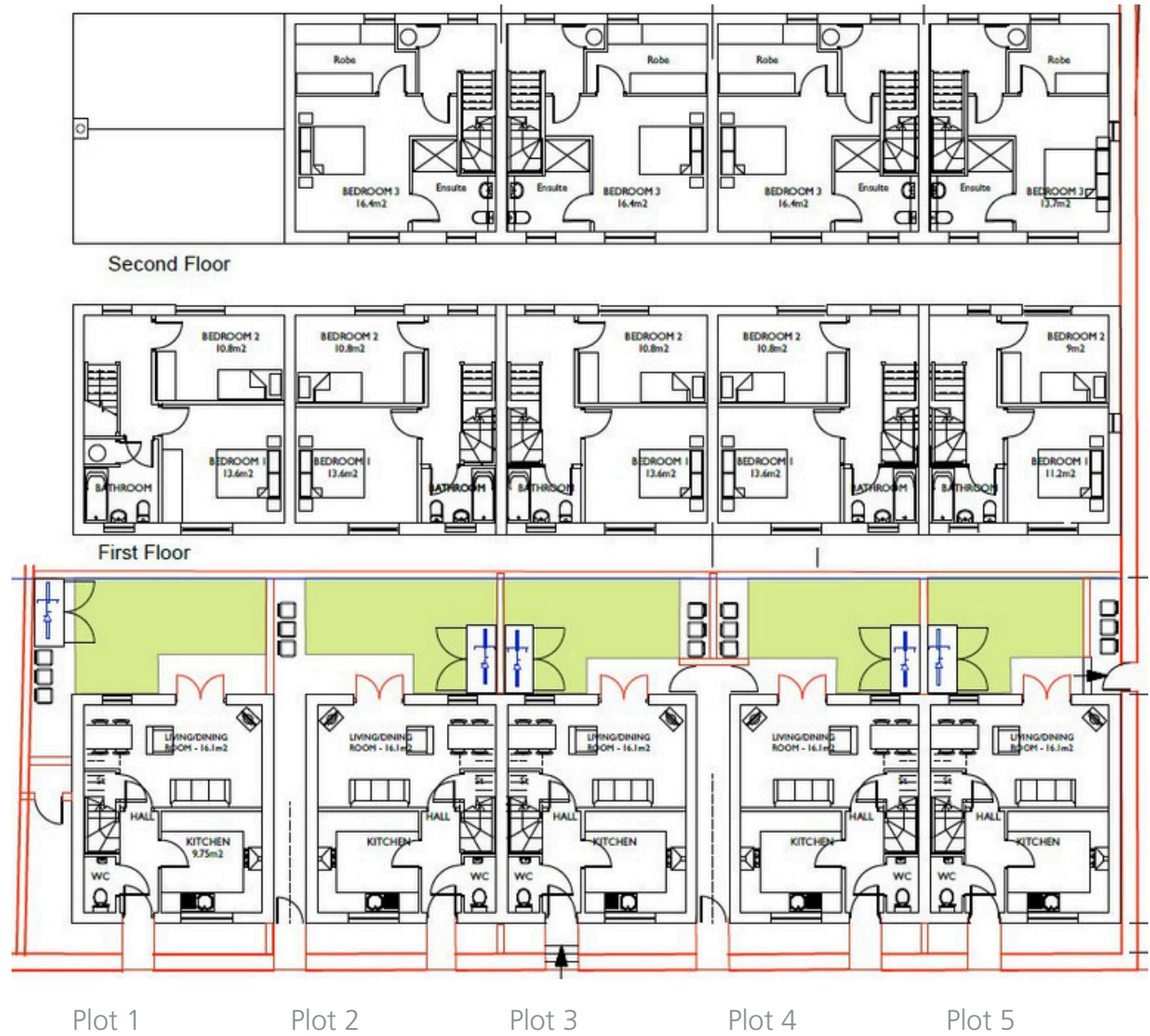
Scheduled for completion in early 2025.





Plots

	Bed	Price
Plot 1	2	£146,500
2 Storey End Terrace		SOLD
Plot 2	2	£185,000
3 Storey Terrace		SOLD
Plot 3	2	£185,000
3 Storey Terrace		SOLD
Plot 4	2	£185,000
3 Storey Terrace		SOLD
Plot 5	2	£185,000
3 Storey End Terrace		





White cabinetry on the left side of the kitchen, including a tall cabinet and a shorter cabinet below it.

White upper cabinets above the countertop, featuring a central window with a subway tile backsplash.

White lower cabinets below the countertop, including a cabinet on the left, a Bosch oven in the center, and a cabinet on the right with a sink.

Black countertop with a kettle, a pot, and various jars on the left side, and a sink with a curved faucet on the right side.

White subway tile backsplash behind the countertop.

Wooden horizontal blinds covering the window above the sink.

Window above the sink, showing a view of the outdoors.

A white round dining table and a wooden chair with a grey seat cushion.

Recessed ceiling lights and under-cabinet lighting.

Specifications

Kitchen

- Stylish wall and floor cupboards from Howdens' Allendale shaker-style kitchen range
- Black stone effect, timber worktop
- Black stainless steel sink and tap
- Choose your preferred kitchen design with a range of integrated appliances* including fridge freezer, dishwasher oven and electric hob and fan

Bathroom and En Suite

- L-shaped shower bath in white gloss finish
- Contemporary vanity unit with ceramic basin top in white gloss finish
- Toilet in white gloss finish
- Chrome-finished bath taps
- Partial tilings in grey to walls, extending to full tiling to bath and shower area
- Grey washed wood flooring

External

- Paving to paths and partial paving to rear hard landscaping (Kadapa black flags limestone)
- Bike sheds designed with provisions for charging electric bikes
- Black UPVC gutters and downpipes
- Slate roof
- White K Rend smooth render with PC concrete window sills and raised bands.

Decor and Finish

- Oak-finished internal doors in white woodwork
- Whitewood oak staircase
- Off-white emulsion paint over plaster to walls and ceilings
- Choose your preferred paint colours*
- LED downlighters in kitchen and bathroom
- Fitted carpets throughout upstairs
- Choose your preferred preferred carpets*

Heating and Electricity

- Air source heat pump central heating system
- Pressurised hot water cylinder
- Underfloor heating on the ground floor
- Radiators on the first and second floors
- Electric-only

Windows and Doors

- Solid composite front door in a choice of blue, green, black or red*
- UPVC slide and sash windows
- UPVC French doors

Warranty

- 10-year Build-Zone Warranty

*Depending on the construction stage



The Developer

The collection of new homes at Church Street, Maryport is offered by Courtier Homes. With 30 years of construction and building experience, Courtier Homes has a successful track record in a variety of building projects, from new builds to conversions across West Cumbria.

Their dedication to quality and meticulous attention to detail guarantees the delivery of precision-crafted homes, incorporating only the finest quality materials selected for durability, aesthetics, and longevity. Their time-tested construction techniques blend craftsmanship, quality, and tradition to deliver homes that ensure the highest standards of comfort and satisfaction for homeowners.





The Area

Set in the heart of Maryport, these homes offer a prime location in this charming coastal town. Maryport's bustling town centre, with its shops, cafes, restaurants, and supermarkets, is just a short stroll away.

The stunning coastline, including the promenade, is just a ten-minute walk away, providing opportunities for leisurely strolls along the beach and coastal paths. For outdoor enthusiasts, the Lake District National Park is easily accessible.

Nearby schools include Maryport Church of England Primary and Junior School, as well as Netherhall Secondary School, all rated "Good" by Ofsted, and are within easy walking distance.

With excellent transport links, including bus routes, a train station, and major roadways, these homes offer both convenience and connectivity.

- Maryport Train Station: 0.9 miles
- Workington: 6 miles
- Carlisle: 31 miles
- Keswick: 26 miles



P



GRISDALES

PROPERTY SERVICES

grisdales.co.uk
01900 829977

PP
Pay Point



7 days 6am to 10pm



Viewings Arrangements

To arrange a viewing of the homes on Church Street or to learn more, please contact our new homes team.



01900 829977



newhomes@grisdales.co.uk

Directions

Take the A595 from Workington towards Maryport. On entering Maryport town centre, continue on Curzon Street until you reach the traffic lights. Take the left onto Wood Street, immediately followed by the right onto Church Street.



Keep In Touch



40 Main Street, Cockermouth

T: 01900 829977 E: cockermouth@grisdales.co.uk

46/47 King Street, Whitehaven

T: 01946 693931 E: whitehaven@grisdales.co.uk



1. We are not authorised to make or give any representations or warranties in relation to the property either here or elsewhere, either on our own or on behalf of our client or otherwise. We assume no responsibility for any statement that may be made in these particulars. These particulars do not form part of any offer or contract and must not be relied upon as a statement or representation of fact.

2. Any areas, measurements or distances are approximate. The text, photographs and plans are for guidance only and only and are not necessarily comprehensive. It should be assumed that the property has all the necessary planning, building regulations and other consents and Grisdales have not tested any services, equipment or facilities. Purchases must satisfy themselves by inspection or otherwise.

3. Photographs and graphics used in the sales brochures may include computer-generated images but are representative of Courtier Homes products. The sales brochure does not constitute a contract, part of a contract, or warranty.

