



1

Bedroom



1

Bathroom

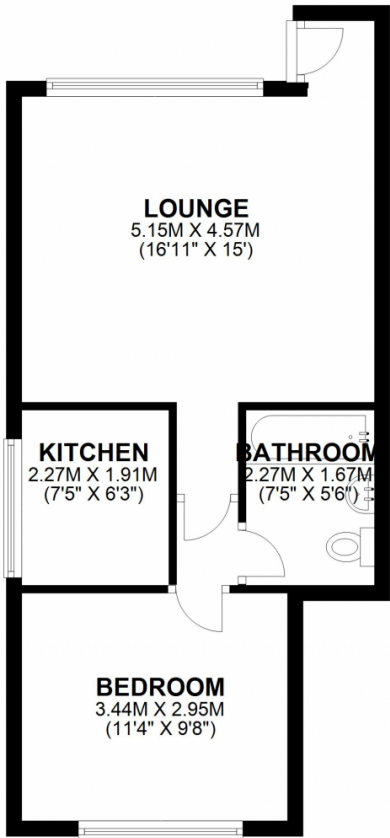
McConnells

£1,100 pcm
Knights Manor Way, Dartford, DA1

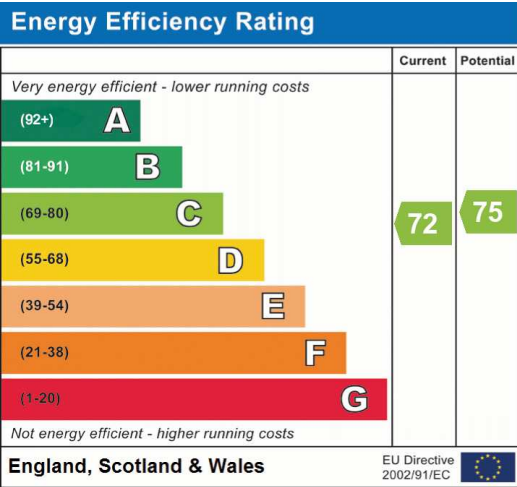
One bedroom ground floor maisonette on the popular Knights Manor Way development, approx 10 minute walk to Dartford Town Centre and Main Line Rail Station. This property benefits from gas central heating and double glazing. There is one allocated parking bay and also on road parking available with no restrictions.

The Property will be available from early July.

GROUND FLOOR
APPROX. 40.3 SQ. METRES (433.4 SQ. FEET)



TOTAL AREA: APPROX. 40.3 SQ. METRES (433.4 SQ. FEET)



Address: Knights Manor Way, Dartford, DA1

