



2

Bedrooms



1

Bathroom



McConnells are delighted to offer this charming two-bedroom split level maisonette located in the peaceful semi-rural area of Swanley Village. Located on the 1st and 2nd floor the property retains some of its original period features with the property built circa 1802. To the 1st floor the property comprises Lounge, Kitchen/Diner and Cloakroom with two Double Bedrooms, Bathroom and WC to the 2nd floor. To the rear there is a beautiful well established walled garden with potential to create an off-road parking space. The sale includes the Freehold.

The historic Swanley Village area is surrounded by beautiful fields and woodlands with country walks and public houses on its doorstep. Access to Swanley High Street and Swanley mainline train station is within easy reach with fast train services direct to London Victoria within 30 minutes.

Entrance Hall: Access to cellar and stairs leading to first floor

Lounge: 3.59m x 5.40m (11'9 x 17'9) Open fire place with ornate surround and hearth, double glazed windows, radiator, fitted carpet

Kitchen: 4.53m x 3.83m (14'10 x 12'7) Fitted wall and base units, built in electric oven, ceramic hob, stainless steel sink with drainer and mono bloc tap, Space for fridge/freezer, space and plumbing for washing machine and dishwasher, radiator, double glazed window, vinyl floor covering

Cloakroom: WC with concealed cistern, wash hand basin, radiator, vinyl floor covering

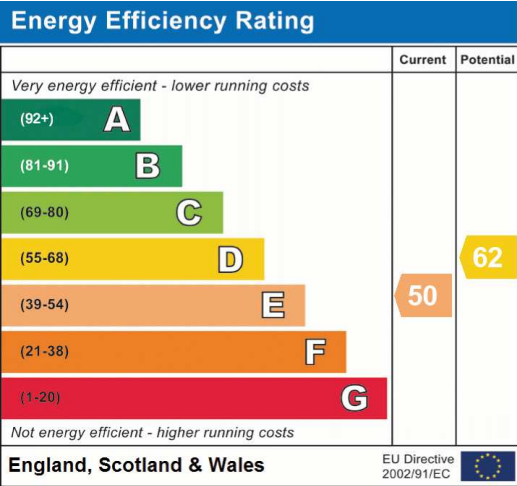
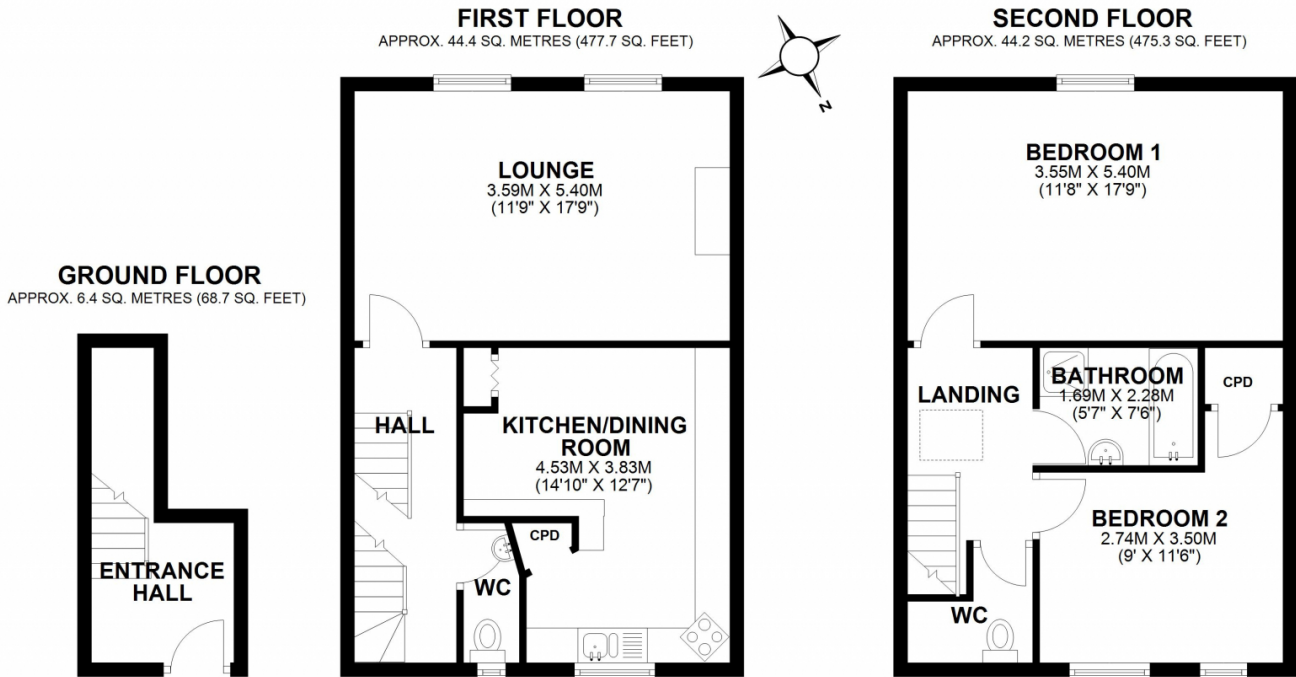
Bedroom 1: 3.55m x 5.40m (11'8 x 17,9) Double glazed window, fitted carpet, radiator

Bedroom 2: 2.74m x 3.50m (9 x 11.6) Double glazed windows, storage/airing cupboard housing hot water cylinder and slatted shelves, Worcester Bosch gas boiler, radiator, wood plank effect floor covering

Bathroom: 1.69m x 2.28m (5'7 x 7'6) Bath with chrome shower mixer tap, Shower cubicle with electric shower, wash hand basin with chrome mono bloc tap, radiator

WC: WC, wash hand basin, radiator, vinyl floor covering

Walled Garden: Lawn, large brick built in shed with power and lighting, well stocked with mature plants and shrubs, patio area



Address: Swanley Village Road, Swanley Kent BR8 7NF

