



 Moovahome.co.uk



## West Street, Aldbourne, Marlborough, SN8 2BS

£750PCM (Deposit: £750)

1 1 0



Tax Band: A Furnished: Furnished

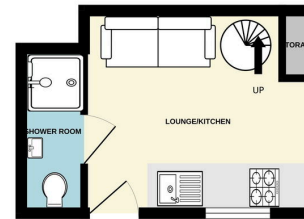
A unique "cosy" attached cottage located in the popular village of Aldbourne. Accommodation comprises; open plan living room with kitchen area, fully tiled shower room, first floor bedroom, central heating and double glazed windows. An ideal home for a week day stay or a unique full time smaller home. Available from 1st October 2025.



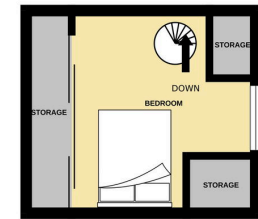




GROUND FLOOR  
149 sq.ft. (13.8 sq.m.) approx.



1ST FLOOR  
122 sq.ft. (11.3 sq.m.) approx.



TOTAL FLOOR AREA : 270 sq.ft. (25.1 sq.m.) approx.

Whilst every attempt has been made to ensure the accuracy of the floorplan contained here, measurements of doors, windows, rooms and any other items are approximate and no responsibility is taken for any error, omission or mis-statement. This plan is for illustrative purposes only and should be used as such by any prospective purchaser. The services, systems and appliances shown have not been tested and no guarantee as to their operability or efficiency can be given.  
Made with Metropac (2024).

## Energy Efficiency Rating

	Current	Potential
Very energy efficient - lower running costs		
(92 plus) <b>A</b>		96
(81-91) <b>B</b>		
(69-80) <b>C</b>		
(55-68) <b>D</b>	62	
(39-54) <b>E</b>		
(21-38) <b>F</b>		
(1-20) <b>G</b>		
Not energy efficient - higher running costs		
<b>England &amp; Wales</b>	EU Directive 2002/91/EC	

[www.moovahome.co.uk](http://www.moovahome.co.uk)

Lettings: Mr A. Cain T/A Moovahome  
Moovahome, Unit 20 Ergo Business Park, Kelvin Road, Swindon SN3 3JW

Unit 20 Ergo Business Park, Kelvin Road, Swindon SN3 3JW

Telephone 01793 512345

[hello@moovahome.co.uk](mailto:hello@moovahome.co.uk)

Sales: Moovahome is a trading name of Moovahome Ltd.  
Registered Office: Unit 20 Ergo Business Park, Kelvin Road, Swindon SN3 3JW