



S

THE STORY OF

# Dovecote Barn

*Eastmoor, Norfolk*

SOWERBYS





THE STORY OF

# Dovecote Barn

3 Eastmoor Road, Eastmoor, King's Lynn, Norfolk  
PE33 9PZ

---

Charactful Barn Conversion

Additional Two Acre Paddock (STMS) with  
Equestrian Fcailities (Sunject to Negotiation)

Open-Plan Dining Area and Fmily Room

Four Double Bedrooms, with  
One on the Ground Floor

En-Suite to Pricipal Bedroom and  
Double Height Vaulted Ceiling

Shaker Style Kitchen/Breakfast Room  
and French Doors to Rear Garden

Double Garage and Secure Off-Road Parking

Inglenook Style Fireplace, High Ceilings,  
Exposed Brickwork and Original Beams

---

SOWERBYS KING'S LYNN OFFICE

01553 766741

kingslynn@sowerbys.com







Dovecote Barn, initially a grain storage barn for Eastmoor Manor, has been transformed into a fantastic family home with a rich outdoor lifestyle. Despite being a downsize for our sellers, the property fulfilled long-held ambitions, providing a perfect space for horses in the back field and convenient access to bridleways.

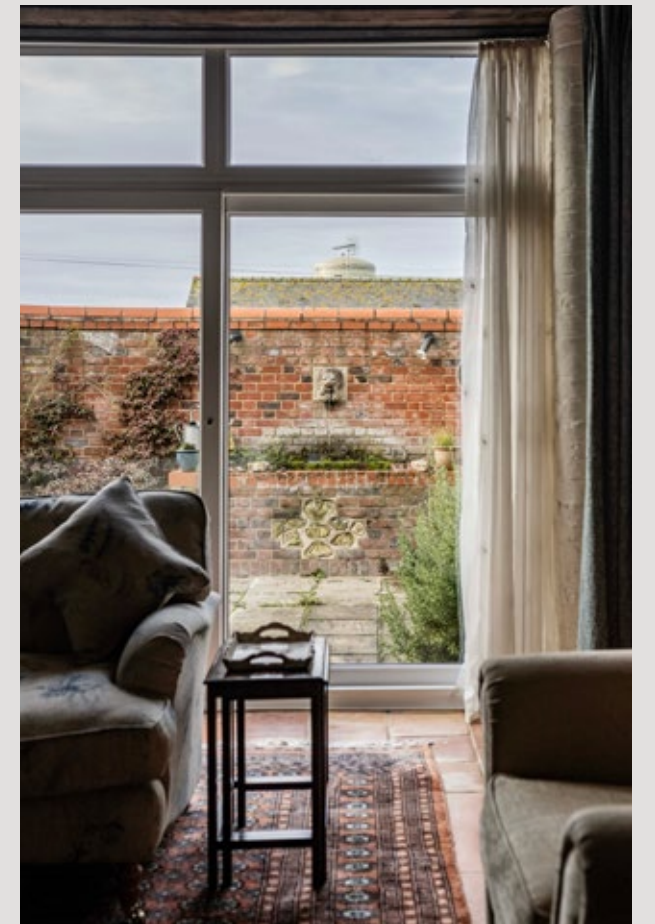
Nestled in a picturesque setting with a private drive and charming chalk exterior, Dovecote Barn exudes a timeless quality blended with modern features. Inside, the barn reveals open, bright spaces adorned with original details like exposed beams and brickwork.

The heart of the home is the kitchen/breakfast room, showcasing a stunning shaker-style kitchen with ample worksurfaces. French doors connect seamlessly to the rear garden, creating an ideal gathering space for family and friends throughout the year.

The central part of the barn is cleverly divided by a staircase, featuring a formal dining room on one side for larger gatherings and a cosy sitting area on the other, complete with an inglenook fireplace.







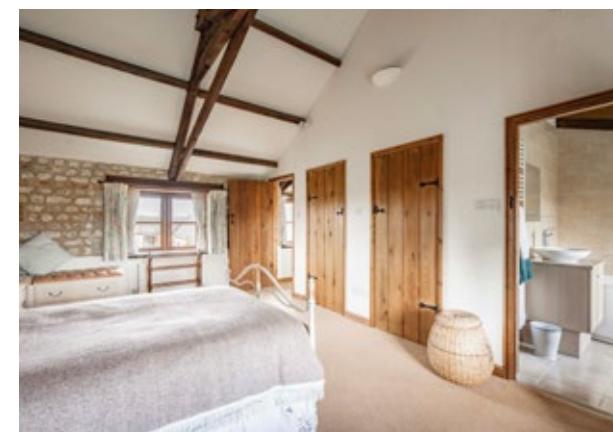




Dovecote Barn also boasts a ground floor bedroom with an adjacent bathroom, perfect for guests or a home office setup. Moving upstairs, three double bedrooms, all offering breathtaking views, and a family bathroom await. The principal bedroom, with its en-suite and vaulted ceiling, adds a touch of grandeur to this charming family home.

Outside, the property impresses with a private drive leading to a double garage and secure off-road parking. The courtyard, bathed in the evening sun, has been a cherished space over the years. A delightful rear garden as been delightfully landscaped with mature trees and shrubs, a delightful summerhouse with views over the paddocks to the rear of the property is the perfect spot for alfresco dining whilst a spacious timber shed provides ample convenient storage.

Experience the perfect blend of rustic charm and modern comforts at Dovecote Barn, where every detail, both indoors and outdoors, contributes to a truly enchanting family home.







Our favourite view is from the summerhouse across the paddocks...







Whilst every attempt has been made to ensure the accuracy of the floor plan contained here, measurements of doors, windows, rooms and any other items are approximate and no responsibility is taken for any error, omission, or mis-statement. This plan is for illustrative purposes only and should be used as such by any prospective purchaser or tenant. The services, systems and appliances shown have not been tested and no guarantee as to their operability or efficiency can be given.

Copyright V360 Ltd 2023 | [www.houseviz.com](http://www.houseviz.com)



# Eastmoor

A SERENE ESCAPE FROM  
THE MODERN WORLD

Nestled in the heart of the Norfolk countryside, Eastmoor is a rural idyll, around ten miles east of Downham Market. Surrounded by charming villages which exude timeless appeal, it's a serene escape from the modern world.

One of Norfolk's oldest market towns, Downham Market can be traced back to Saxon times. The town has a good range of shops and a busy market on Fridays and Saturdays as well as a range of schools and nurseries including a college. There are many attractive houses and buildings and an unusual gothic black and white town clock.

There is a mainline railway station with fast direct trains to Cambridge (39 minutes) and London King's Cross (1 hour and 35 minutes). It is an ideal place for walking or cycling and the peaceful waterways are excellent for boating and fishing.

Nearby at Welney is the famous Wildfowl and Wetlands Trust nature reserve, which is very popular with birdwatchers.

In November the Festival of Swans is held where visitors can observe the over-wintering swans.



## Note from the Vendor



"It's a cosy, yet spacious, home - with wonderful views!"



## SERVICES CONNECTED

Mains electricity and water. Drainage to septic tank. Oil fired central heating.

## COUNCIL TAX

Band E.

## ENERGY EFFICIENCY RATING

D. Ref:- 2534-5522-9300-0216-4206

To retrieve the Energy Performance Certificate for this property please visit <https://find-energy-certificate.digital.communities.gov.uk/find-a-certificate/search-by-reference-number> and enter in the reference number above. Alternatively, the full certificate can be obtained through Sowerbys.

## TENURE

Freehold.

## LOCATION

What3words: ///firelight.warns.signified

These particulars and measurements whilst believed to be accurate, are set out as a general outline only for guidance and do not constitute any part of an offer or contract. Intending purchasers should not rely on them as statements of representation of fact, but must satisfy themselves by inspection or otherwise as to their accuracy. No person in this firm's employment has the authority to make or give representation or warranty in respect of the property.



# SOWERBYS

We are proudly supporting these Norfolk charities by organising and participating in events throughout 2025, along with making a donation for every home we sell.



Sowerbys Estate Agents Limited is a company registered in England and Wales, company no: 05668606.  
Registered office 54 Westgate, Hunstanton, Norfolk, PE36 5EL

