



## Flat 7, 41 South Terrace, Littlehampton, BN17 5NU

£125,000

- One Bedroom Converted Apartment
- 13'3x13'0 Lounge/Kitchen
- 6'8 Bathroom
- Double Glazing
- Chain Free
- Seafront Location
- 10'1 Bedroom
- Balance Of 999 Year Lease
- Views Towards South Downs to Rear

Description

Nestled in the charming area of South Terrace, Littlehampton, this delightful flat offers a unique blend of historical character and modern convenience. Built in 1850, the property boasts a rich heritage while providing a comfortable living space of 474 square feet.

This property is ideal for those seeking a low-maintenance lifestyle in a vibrant coastal town. Littlehampton is known for its beautiful beaches, scenic riverside walks, and a variety of local amenities, including shops, cafes, and restaurants. The flat's location offers easy access to public transport, making it convenient for commuting or exploring the surrounding areas.

Whether you are a first-time buyer, a couple, or looking for a rental investment, this flat presents an excellent opportunity to own a piece of history in a desirable location.

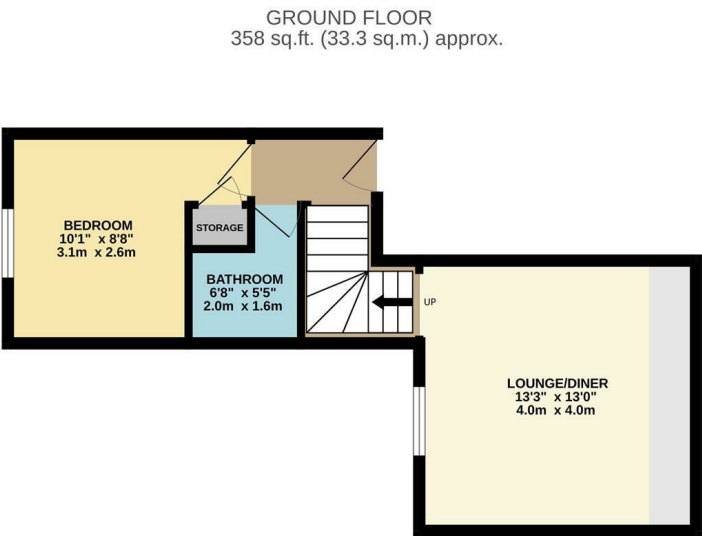
 1

 1

 1

 E 41

Council Tax Band: A | Tenure: Leasehold - Share of Freehold



KITCHEN/LOUNGE  
13'3 x 13

BEDROOM  
10'1 x 8'8  
13'3 x 13

BATHROOM  
6'8 x 5'5

LEASE  
999 years from 25/03/1989

SERVICE CHARGE  
£1261.60 per 6 months (confirmation awaited of this figure)

GROUND RENT  
tbc

Please note:  
The seafront image is provided to illustrate the property's seaside location only and is not the view from the apartment.

Littlehampton is a charming seaside town sheltered by the South Downs and providing a range of amenities to suit individuals, couples and families of all ages. The town benefits from two beaches with the popular East Beach providing a long promenade, family fun at Harbour Park, the award winning East Beach café, childrens playground and many other highlights. West Beach offers a quieter experience with the unspoilt grassy sand dunes offering ideal dog walking opportunities as well as watersports for those seeking adventure.

The River Arun divides the two beaches and offers traditional seaside fun as well as modern cafes and restuarants as well as stunning views. The town's other recreational facilities include a cinema, modern sports centre, museum and golf course as well as many parks and green spaces. The mainline train station will take you to Gatwick Airport, Victoria Station and beyond. Littlehampton is located approximately 7 miles from Worthing and 13 miles from Chichester. There are a number of primary and junior schools in the town as well as The Littlehampton Academy. In the High Street you will find a range of shops including household names and independent shops.

These particulars are produced in good faith and are believed to be correct, but their accuracy is in no way guaranteed and they do not form part of a contract. We have not carried out a survey, nor tested the services, appliances and specified fittings. Room measurements are approximate.