



25 Fairhaven Gardens, Wick, BN17 7TQ £310,000

- Three Bedroom Persimmon "Hanbury" Design End Terrace House
- Two Allocated Adjoining Parking Spaces
- Ground Floor Cloakroom
- Chain Free
- 15'2 Kitchen/Diner Overlooking Garden
- 12'1 Master Bedroom With En-Suite Shower Room
- 14'3 Lounge
- South Facing Rear Garden
- Popular Hampton Park Development
- Cul De Sac Location

25 Fairhaven Gardens, Wick BN17 7TQ

Nestled in a quiet cul-de-sac within the ever-popular Hampton Park development, this beautifully presented Persimmon “Hanbury” design end terrace house offers a fantastic opportunity for families, first-time buyers, or investors alike.

Step inside to discover a spacious 14'3 lounge, perfect for relaxing or entertaining guests, alongside a convenient ground floor cloakroom. To the rear, the heart of the home is the impressive 15'2 kitchen/diner, overlooking the south-facing garden—ideal for sunny days and al fresco dining.

Upstairs, the 12'1 master bedroom boasts its own en-suite shower room, complemented by two additional bedrooms and a stylish family bathroom.

Outside, you'll enjoy a private south-facing rear garden and the added convenience of two allocated adjoining parking spaces.

Offered chain free, this fantastic home is not to be missed—schedule your viewing today!



Council Tax Band: C

Tenure: Freehold



LIVING ROOM

14'3x12'00

KITCHEN/DINING ROOM

15'2x8'8

MASTER BEDROOM

12'1x9'5

EN SUITE SHOWER ROOM

6'3x5'3

BEDROOM 2

8'9x7'5

BEDROOM 3

7'5x6'1

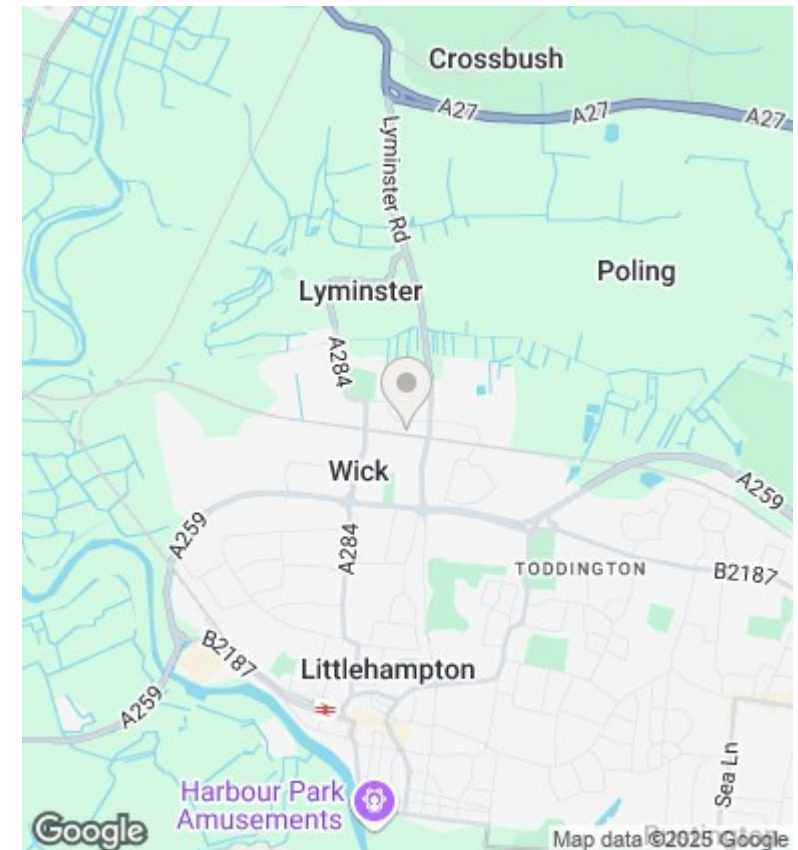
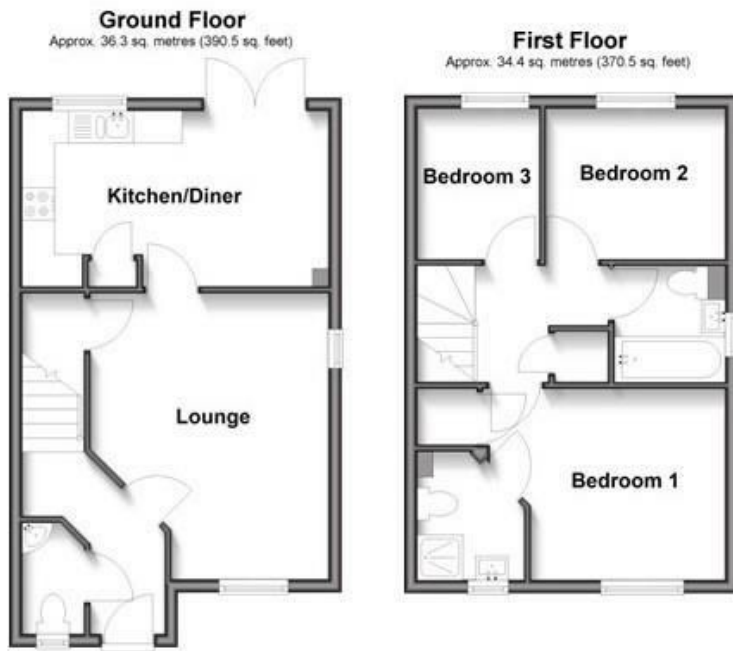
BATHROOM

5'9x5'5

ESTATE FEE

Approx £270 PA.





Energy Efficiency Rating		
	Current	Potential
Very energy efficient - lower running costs		
(92 plus) A		96
(81-91) B	83	
(69-80) C		
(55-68) D		
(39-54) E		
(21-38) F		
(1-20) G		
Not energy efficient - higher running costs		
England & Wales	EU Directive 2002/91/EC	

These particulars are produced in good faith and are believed to be correct, but their accuracy is in no way guaranteed and they do not form part of a contract. We have not carried out a survey, nor tested the services, appliances and specified fittings. Room measurements are approximate.