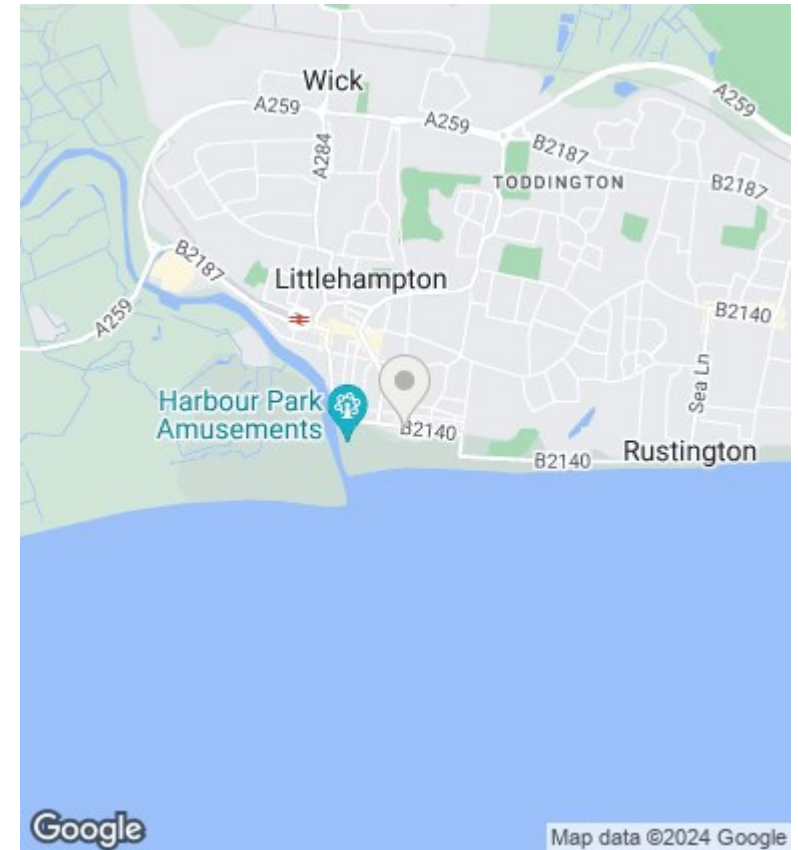
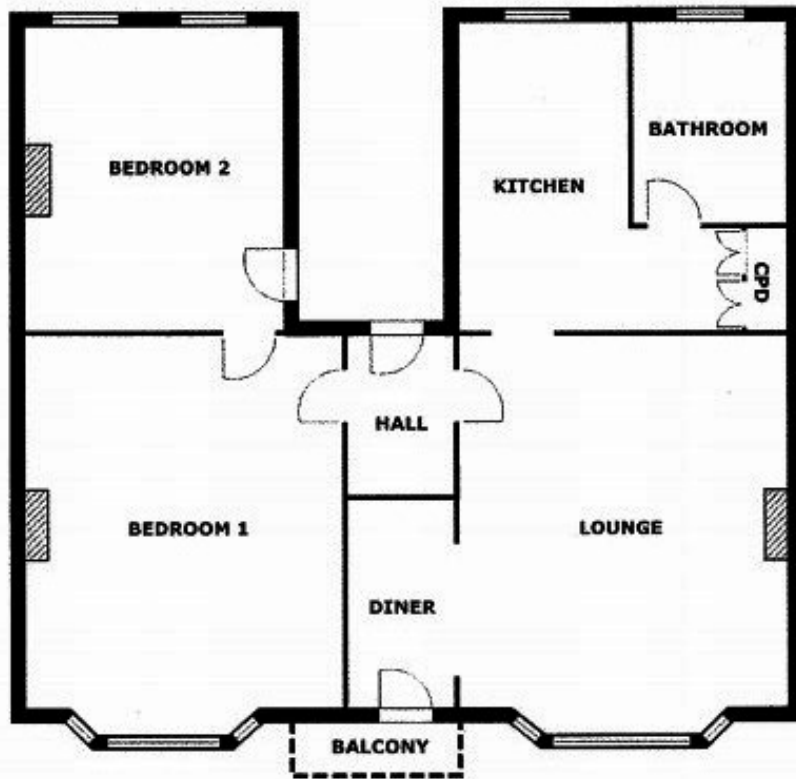




## First Floor Flat, 54 South Terrace, Littlehampton, Littlehampton,

£1,050 PCM

- VIEWING SLOTS FRIDAY 28TH JUNE
- AVAILABLE EARLY JULY
- Seafront Apartment
- Two Double Bedrooms
- South Facing Balcony with Sea Views
- 19' Lounge/Diner
- Four Piece White Bathroom Suite
- Gas Central Heating
- Restrictions Apply



### Directions

### Viewings

Viewings by arrangement only. Call 01903 719333 to make an appointment.

### Council Tax Band

B

### EPC Rating:

C

Energy Efficiency Rating		Current	Potential
<i>Very energy efficient - lower running costs</i>			
(92 plus)	A		
(81-91)	B		81
(69-80)	C	70	
(55-68)	D		
(39-54)	E		
(21-38)	F		
(1-20)	G		
<i>Not energy efficient - higher running costs</i>			
<b>England &amp; Wales</b>		EU Directive 2002/91/EC	