



## 32 Eagles Chase, Wick, BN17 7RF

£289,950

- Two Bedroom End Of Terrace House
- 14'10 Lounge
- In Need Of Some Modernisation
- Chain Free
- Popular Birds Estate
- 13'01 Kitchen/Breakfast Room
- Two Double Bedrooms
- Double Garage, Driveway Parking and Further Allocated Parking Space
- 10'09 Conservatory
- Tucked Away Position Within The Development



# 32 Eagles Chase, Wick BN17 7RF

Nestled within the sought-after Birds Estate, this charming two-bedroom end of terrace house offers an ideal blend of comfort and potential. Boasting a DOUBLE garage, driveway parking, and an additional allocated parking space, convenience is a hallmark of this residence.

Inside, a welcoming 14'10 lounge provides ample space for relaxation or entertainment, while the adjacent 13'01 kitchen/breakfast room beckons culinary enthusiasts with its inviting ambiance. Adding to the allure is a delightful 10'09 conservatory, offering a tranquil retreat bathed in natural light.

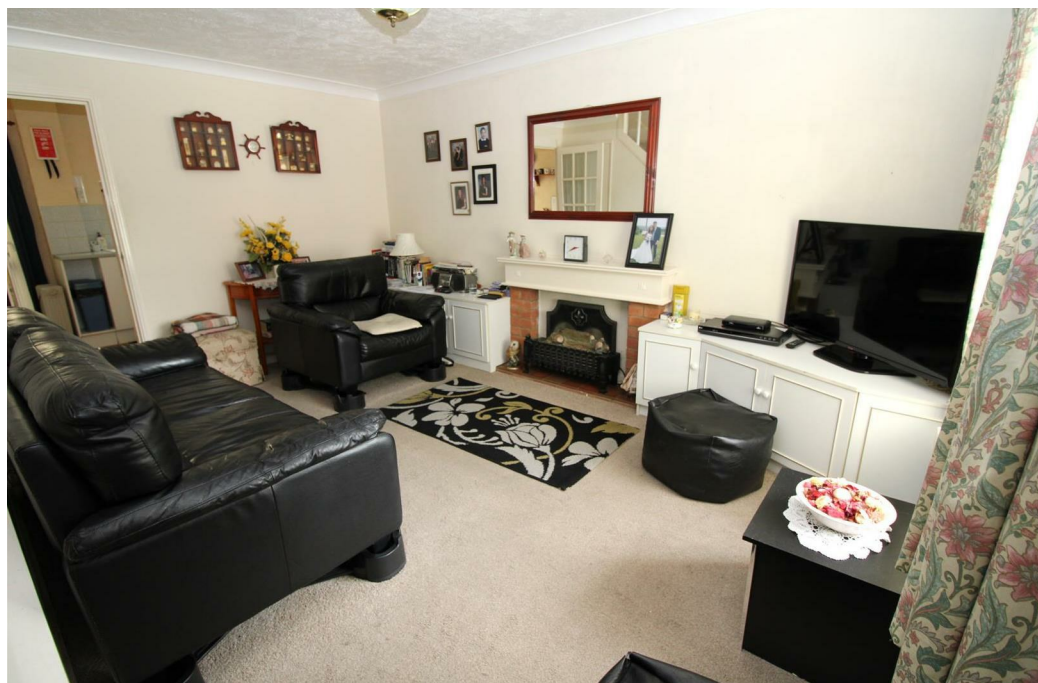
Two generously sized double bedrooms ensure comfortable accommodation, while the property's tucked-away position within the development ensures privacy.

This home holds immense potential to be transformed into a bespoke haven tailored to your preferences.

Conveniently offered chain-free, seize the chance to make this residence your own!



Council Tax Band: C



LOUNGE

14'10 x 13' 01

KITCHEN/BREAKFAST ROOM

13' 01 x 7'08

CONSERVATORY

10'09 x 8'01

BEDROOM ONE

11'01 x 9'08

BEDROOM TWO

11'02 7'10

BATHROOM

7'9 x 5'9



Total Area: 704 ft² ... 65.4 m²

Whilst every attempt has been made to ensure the accuracy of the floor plan contained here, measurements are approximate and no responsibility is taken for error, omission or mis-statement.  
 This plan is for illustrative purposes only and should be used as such by any prospective purchaser.  
 Created by Jlm 2024



## Directions

## Viewings

Viewings by arrangement only. Call 01903 719333 to make an appointment.

## Council Tax Band

C

Energy Efficiency Rating		Current	Potential
<i>Very energy efficient - lower running costs</i>			
(92 plus) <b>A</b>			84
(81-91) <b>B</b>			
(69-80) <b>C</b>			
(55-68) <b>D</b>		66	
(39-54) <b>E</b>			
(21-38) <b>F</b>			
(1-20) <b>G</b>			
<i>Not energy efficient - higher running costs</i>			
<b>England &amp; Wales</b>		EU Directive 2002/91/EC	