



103 Bayford Road, Littlehampton, BN17 5HW

Asking Price £350,000

- Substantial Period Terrace House
- Newly Fitted 10'01 Kitchen
- Garage To Rear Of Property
- Chain Free
- Extensive Accommodation Spread Over Three Floors
- Utility Room With Matching Units
- 15'03 x 13'08 Master Bedroom
- Newly Recarpeted & Redecorated Throughout
- Close To Seafront & Town Centre
- Viewing Highly Recommended To Appreciate Size Of Accommodation

103 Bayford Road, Littlehampton BN17 5HW

Substantial Period Terrace House * Extensive Accommodation Spread Over Three Floors * Five Bedrooms * Newly Recarpeted & Redecorated Throughout * Newly Fitted 10'01 Kitchen * Utility Room With Matching Units * Close To Seaford & Town Centre * Garage To Rear Of Property * 15'03 x 13'08 Master Bedroom * Viewing Highly Recommended To Appreciate Size Of Accommodation * Chain Free *



Council Tax Band: D



LOUNGE

13'8" x 11'6"

DINING ROOM

11'11" x 9'10"

KITCHEN

10'1" x 9'3"

BEDROOM ONE

15'3" x 13'8"

BEDROOM TWO

14'7" x 13'11"

BEDROOM THREE

11'6" x 9'4"

BEDROOM FOUR

11'1" x 9'3"

BEDROOM FIVE

9'10" x 6'9"

UTILITY ROOM

9'10" x 6'6"

SECOND FLOOR BATHROOM

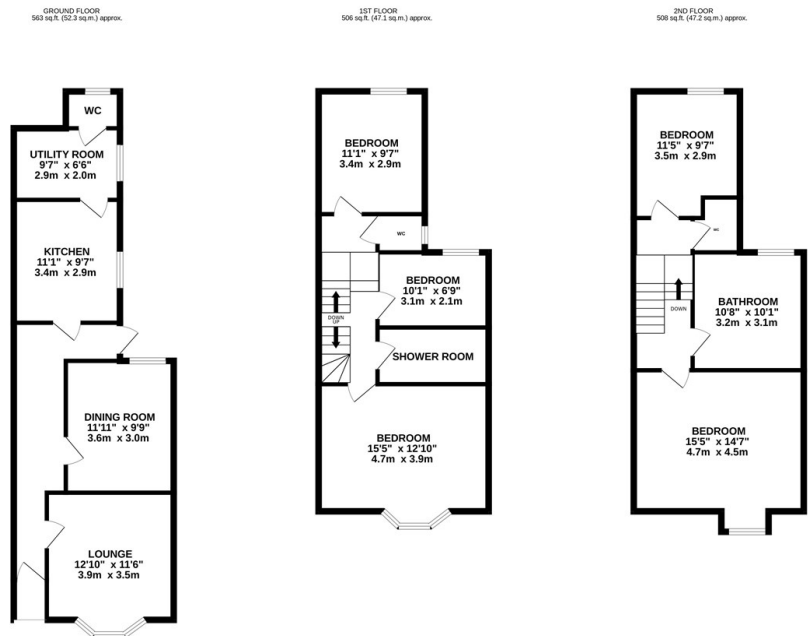
9'10" x 8'9"

FIRST FLOOR SHOWER ROOM

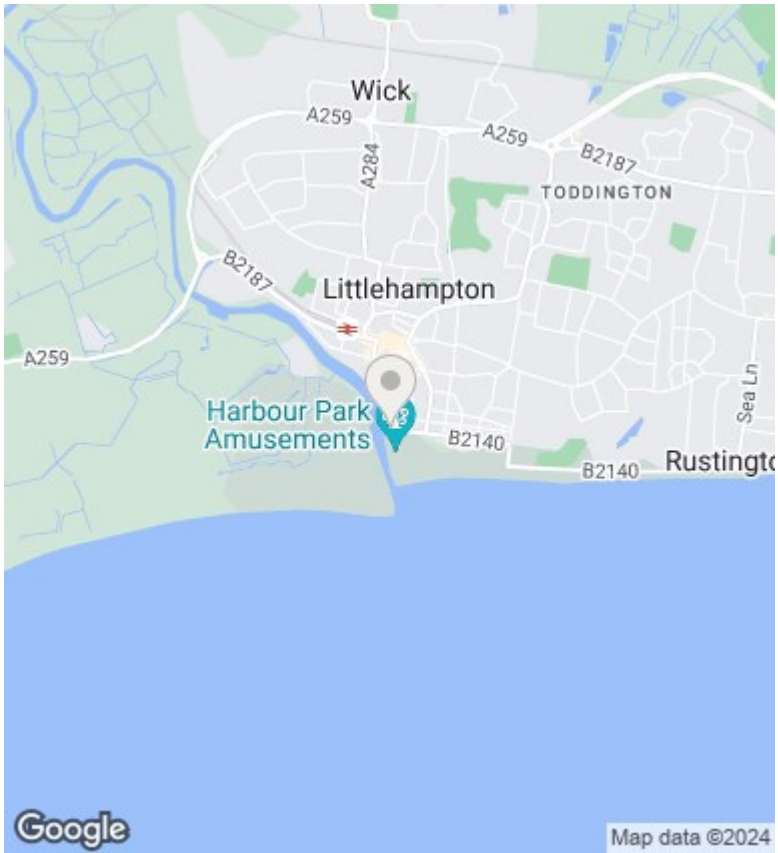
8'7" x 4'8"

EPC RATING-D

COUNCIL TAX BAND- D



THREE BEDROOM MID TERRACED HOUSE
 TOTAL FLOOR AREA: 1578 sq.ft. (146.6 sq.m.) approx.
While every attempt has been made to ensure the accuracy of the floorplans contained here, measurements of doors, windows, rooms and any other items are approximate and no responsibility is taken for any error, omission or misstatement. This plan is for illustrative purposes only and should be used as such by any prospective purchaser. The services, systems and appliances shown have not been tested and no guarantee as to their operability or efficiency can be given.
 Made with Metrepx ©2024



Directions

Viewings

Viewings by arrangement only. Call 01903 719333 to make an appointment.

Council Tax Band

D

Energy Efficiency Rating		Current	Potential
<i>Very energy efficient - lower running costs</i>			
(92 plus) A			
(81-91) B			83
(69-80) C			
(55-68) D		59	
(39-54) E			
(21-38) F			
(1-20) G			
<i>Not energy efficient - higher running costs</i>			
England & Wales		EU Directive 2002/91/EC	