



EAST MARKHAM

ROSE & CO HOMES



Welcome to **EAST MARKHAM**



Our East Markham development comprises of 9 beautiful homes with an orchard at its centre, in homage to the village's historical apple orchards.

Situated in East Markham, near Tuxford and Retford, these properties offer the best of both worlds: a peaceful and friendly neighbourhood while still being close to essential amenities, schools, parks, and transportation links.



F&C
fineandcountry.com™

BEAUTIFUL HOMES THAT DEFY IMAGINATION.

Our goal for all our developments is to create beautiful homes that pay homage to their surroundings.

East Markham is nestled in a traditional village accompanied by a historical Church landmark. So it was essential for us to create homes that would reflect this country feeling.

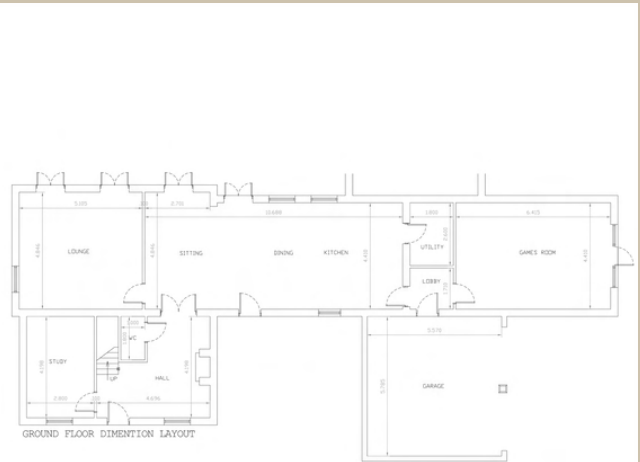


CGI is indicative only. All planting and landscaping shown within the imagery is for illustrative purposes and may vary as construction takes effect. Planting shown is an interpretation of how the site may look when matured.



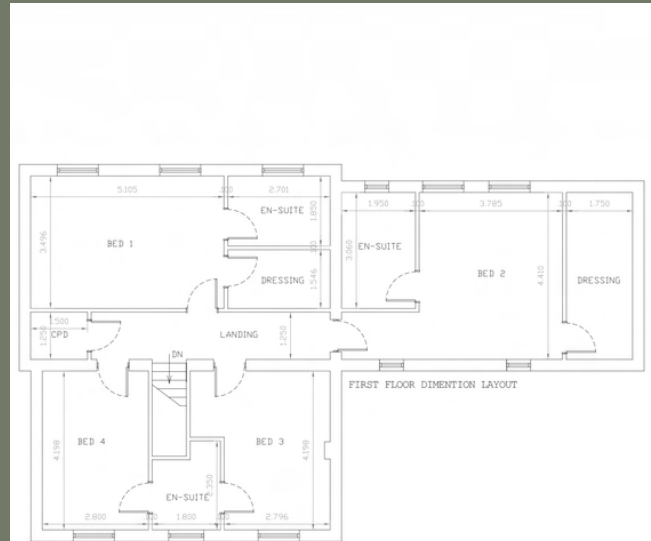
PLOT 7

4 Bedroom property with games room- 318sqm/3423sqft
 £995,000



Lounge	5.1m X 4.8m
Sitting/dining/kitchen	10.6 X 4.4m
Utility	1.8m X 2.6m
Games Room	6.4m X 4.4m
Study	2.8m X 4.1m
W/C	1.0m X 1.8m
Garage	5.5m X 5.7m

Bedroom 1	5.1m X 3.4m
Ensuite	2.7m X 1.9m
Dressing	2.7m X 1.5m
Bedroom 2	3.7m X 4.4m
Ensuite	1.9m X 3.0m
Bedroom 3	2.7m X 4.1m
Bedroom 4	2.8m X 4.1m
Ensuite	1.8m X 2.3m





Tailored to you, not just in aesthetics but in functionality too.

We always love working with our customers to ensure they have the home and interiors they dream of. Choose your colours, style and appliances to suit your needs.



Bespoke luxury Kessler kitchens, supplied with a lifetime guarantee.

Beautiful homes deserve beautiful interiors. So we individually design each kitchen in-house with our partner **Saute&Soak**.





Tailored to you, not just in aesthetics but in functionality too.

We always love working with our customers to ensure they have the home and interiors they dream of. Choose your colours, style and sanitary ware to suit your needs.

Bespoke luxury bathrooms tailored to you.

Each of our bathrooms is designed in-house by our luxury bathroom partner. We ensure to keep on trend so you know your bathroom is designed to stand the test of time, season to season.





A SLICE OF HISTORY

East Markham sits in beautiful countryside with a rich history. Historically known as Great Markham to separate it from its sister village West Markham, East Markham has been a feature of Nottinghamshire since 1086 when it was recorded in the Domesday book. An example of this long history still exists today if you visit the Parish Church of St John the Baptist, which has been standing for 600 years. This church is a point of pride and stands as a landmark of the area and a prime example of the architecture of its time.

LOCAL ATTRACTIONS



GET OUT THERE

Thanks to easy transport links there is plenty to do around East Markham. It is only a 4-minute drive from Tuxford, 13 minutes from Retford and 20 minutes from Newark. Also, there are easy bus links to Newark and Retford right in the village.

Church Spa

Located inside a Methodist church, the building has been repurposed and now serves as a unique establishment offering both a luxury day spa and a bed and breakfast experience.

Sundown Adventureland

Sundown Adventureland offers a range of rides, activity parks, and shows that are specifically designed for kids under 10 years old. The park provides a family-friendly environment where children can have a fun-filled day.

The Queens Hotel

The Queens Hotel's reputation for good food and excellent service has contributed to its popularity within the local community and beyond. The combination of tasty cuisine and attentive service creates a memorable dining experience that keeps guests coming back for more.

THE PROPERTIES



SPECIFICATION**

PLOTS 1, 7, 8 & 9

INTERIOR DESIGN

- **Luxury** Bathrooms and Kitchen designed, supplied by Saute & Soak.
- Ensuites include shower.
- Main Bathrooms include bath.

INTERNAL FINISHES -

- White walls.
- White woodwork.
- Stairs choice of colour otherwise white.
- Internal doors stained.
- Tiled - study, utility, hallway, cloak, kitchen/diner, wc.
- Carpets - Lounge, Stairs, all bedrooms, and landing.
- Bathrooms - tiled floors, shower and bath walls.

ELECTRICS -

- Spotlights throughout all rooms.
- White switches and sockets.
- Garage LED battens.
- Shaver points in bathrooms
- Led mirror in Main Bathroom.
- Outside up and down lights.
- Security alarm.
- Fans.

PLOTS 2, 3, 4, 5 & 6

INTERIOR DESIGN

- **Luxury** Bathrooms and Kitchen designed, supplied by Saute & Soak.
- Ensuites include shower.
- Main Bathrooms include bath.

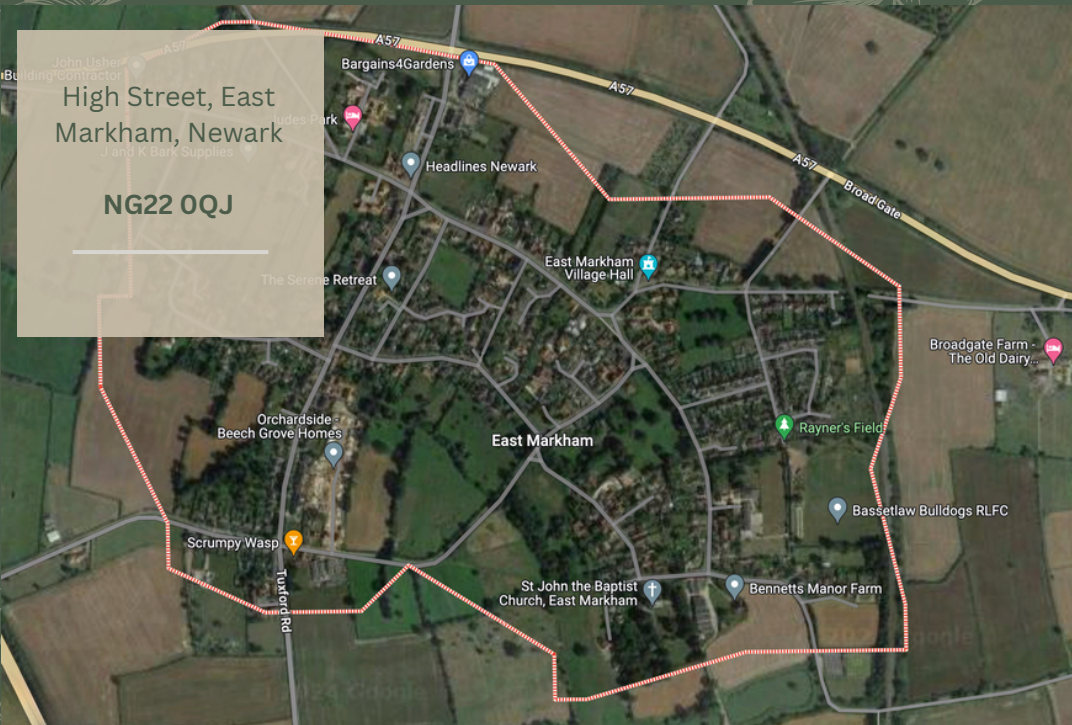
INTERNAL FINISHES -

- White walls.
- White woodwork.
- Stairs white.
- Internal doors stained.
- Tiled - study, utility, hallway, cloak, kitchen/diner, wc.
- Carpets - Lounge, Stairs, all bedrooms, and landing.
- Bathrooms - tiled floors, shower and bath walls.

ELECTRICS -

- Spotlights in kitchen & bathroom.
- White switches and sockets.
- Shaver points in bathrooms
- Led mirror.
- Security alarm.
- Fans.

LOCATION

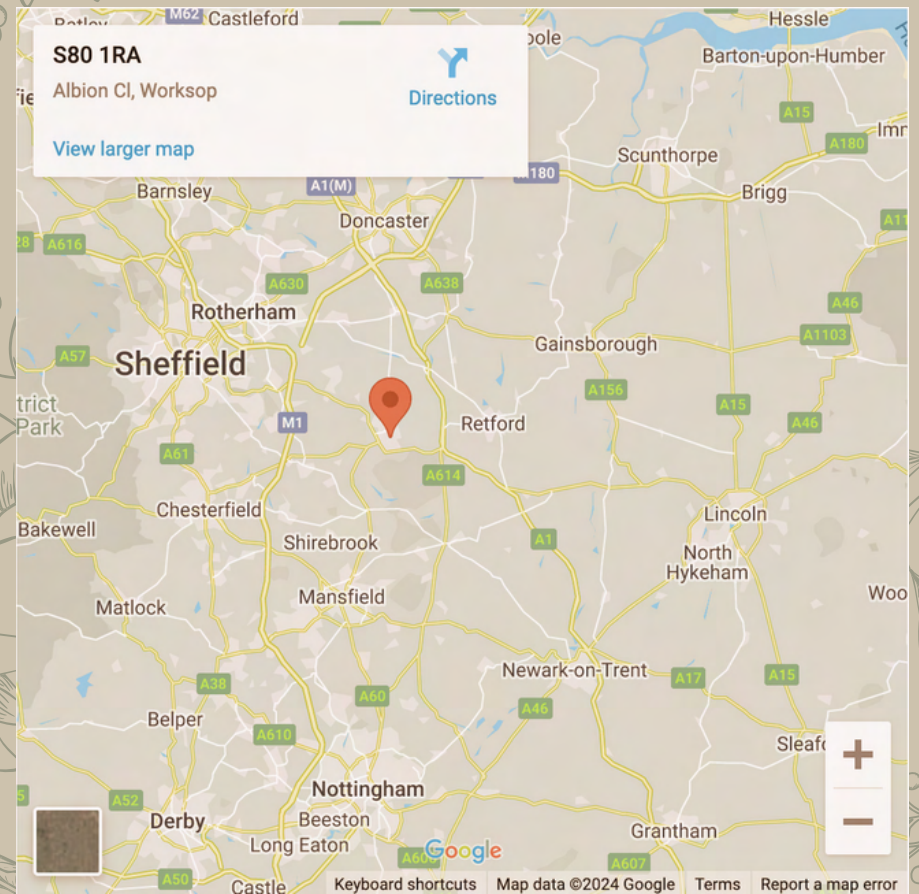


WHERE TO FIND US

Address: 1, Albion Close, Worksop, S80 1RA

Tel: 01909 261 061

Email: enquiries@roseandcohomes.co.uk





EAST MARKHAM

ROSE & CO HOMES

