



Perry Close, Uxbridge, UB8 3RE

- Available NOW
- Repainted throughout
- 1 parking space included
- Built-in wardrobes
- Easy reach to Stockley Park
- Unfurnished
- EPC Rating - D
- First floor apartment
- Clean & well presented
- Close to all major road links

£1,450 PCM

Cameron Estate Agents
195 High Street,
Middlesex, Uxbridge, UB8 1LB

E: uxbridge@cameron.co
T: 01895252000

www.cameron.co



Whilst every care has been taken to ensure the accuracy of these particulars, none of the statements contained herein are to be relied upon as representations of fact. These particulars do not constitute an offer or contract.

Description

A well-presented two-bedroom flat located in the popular Conference House development on Perry Close. Having been repainted throughout and fitted with new flooring, this property is ready for tenants to take possession. The property offers a bright and spacious living area, a fitted kitchen with ample storage, and two good-sized bedrooms. Additional benefits include a well-maintained bathroom, double glazing throughout, and allocated off-street parking. Situated in a quiet residential close, the flat is ideally positioned within easy reach of Uxbridge town centre, local shops, and excellent transport links, making it an ideal home for professionals or a small family. Presented to the market unfurnished.

IMPORTANT NOTICE

These particulars have been prepared upon information supplied by the Vendor and should be verified by your surveyors and solicitors. In accordance with the Property Misdescriptions Act 1991 we have prepared these sales particulars as a general guide to give a broad description of the property. They are not intended to constitute part of an offer or contract. We have not carried out a structural survey and the services, appliances and specific fittings have not been tested. All photographs, measurements, floor plans and distances referred to are given as a guide only and should not be relied upon for the purchase of carpets or any other fixtures or fittings. Lease details service charge and ground rent (where applicable) are given as a guide only and should be checked and confirmed by your solicitor prior to exchange of contract

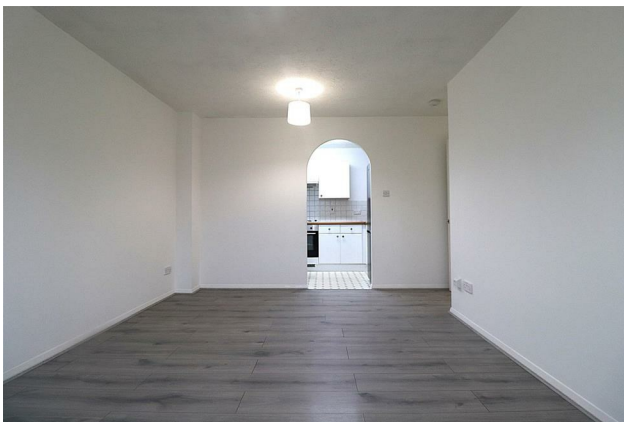
First Floor

Approx. 55.4 sq. metres (596.0 sq. feet)



Total area: approx. 55.4 sq. metres (596.0 sq. feet)

Cameron



Whilst every care has been taken to ensure the accuracy of these particulars, none of the statements contained herein are to be relied upon as representations of fact. These particulars do not constitute an offer or contract.