



Whitehall Close, Uxbridge, UB8 2DJ

- Two Double Bedrooms
- Located Moments From Uxbridge High Street
- Fully Tiled Shower-room
- First Floor
- Carpeted Throughout
- Furnished Apartment
- Garage Use For Storage
- Separate Kitchen
- Freshly Painted
- Well Presented

£1,500 PCM



Cameron Estate Agents
195 High Street,
Middlesex, Uxbridge, UB8 1LB

E: uxbridge@cameron.co
T: 01895252000

www.cameron.co

Whilst every care has been taken to ensure the accuracy of these particulars, none of the statements contained herein are to be relied upon as representations of fact. These particulars do not constitute an offer or contract.

Description

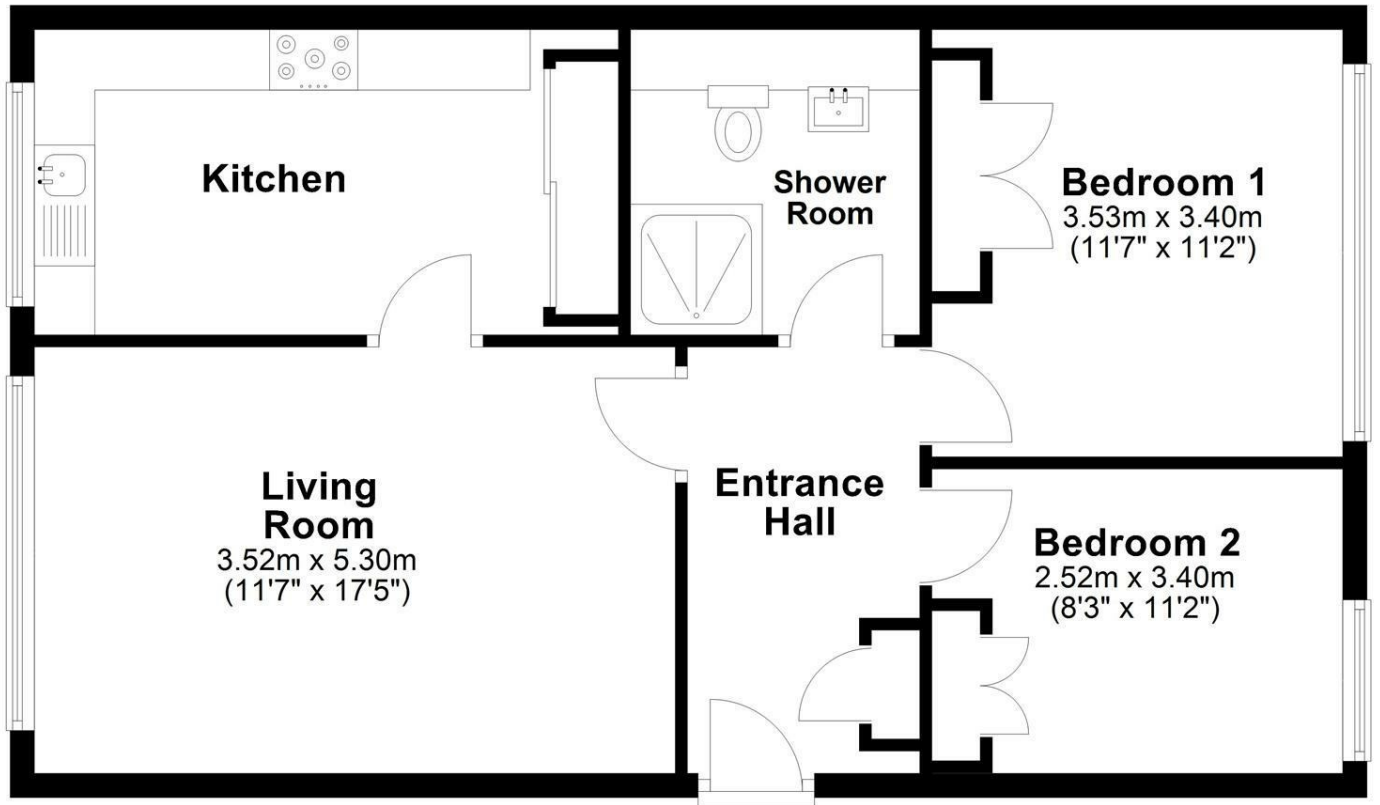
Cameron offer this well-presented two-bedroom apartment located in a quiet residential cul-de-sac, just a short walk from Uxbridge Town centre and Underground station. This modern property is ideal for professionals or small families seeking convenient access to Central London via the Metropolitan and Piccadilly Lines. The flat offers a spacious lounge, a stylish kitchen with integrated appliances, and a contemporary family shower-room. Both bedrooms are generously sized, providing comfortable living space throughout. With an EPC rating of C and Council Tax Band C, this home offers a great balance of comfort, style, and practicality at a fantastic price. Available furnished from early May 2025.

IMPORTANT NOTICE

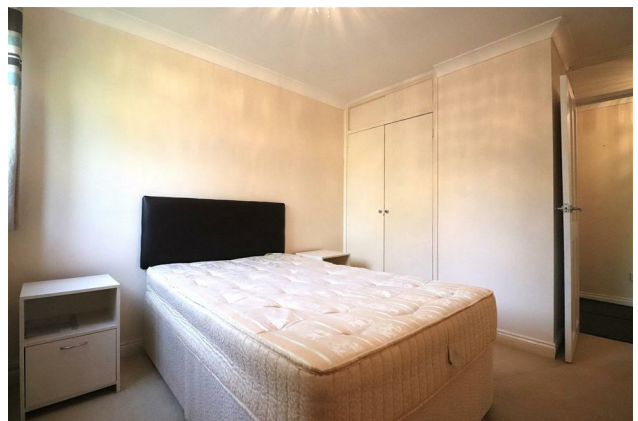
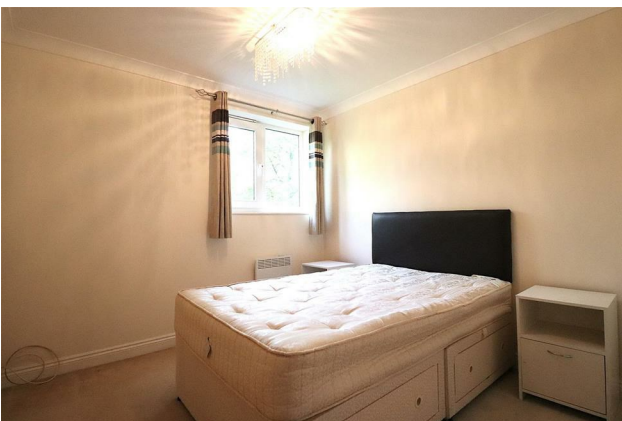
These particulars have been prepared upon information supplied by the Vendor and should be verified by your surveyors and solicitors. In accordance with the Property Misdescriptions Act 1991 we have prepared these sales particulars as a general guide to give a broad description of the property. They are not intended to constitute part of an offer or contract. We have not carried out a structural survey and the services, appliances and specific fittings have not been tested. All photographs, measurements, floor plans and distances referred to are given as a guide only and should not be relied upon for the purchase of carpets or any other fixtures or fittings. Lease details service charge and ground rent (where applicable) are given as a guide only and should be checked and confirmed by your solicitor prior to exchange of contract

First Floor

Approx. 66.5 sq. metres (716.0 sq. feet)



Cameron



Whilst every care has been taken to ensure the accuracy of these particulars, none of the statements contained herein are to be relied upon as representations of fact. These particulars do not constitute an offer or contract.