



Keith Park Road, Uxbridge, UB10 0RQ

- Available Mid August 2025
- Built-In Wardrobe Space
- Furnished
- Viewing Highly Recommended
- Sharers Welcome
- Three Bedrooms
- Fantastic Rear Garden
- On Street Parking
- Families Welcome
- Conveniently Located Near Major Road Links

£2,000 PCM

arla | propertymark
PROTECTED

naea | propertymark
PROTECTED

Cameron Estate Agents
195 High Street,
Middlesex, Uxbridge, UB8 1LB

E: uxbridge@cameron.co
T: 01895252000

www.cameron.co

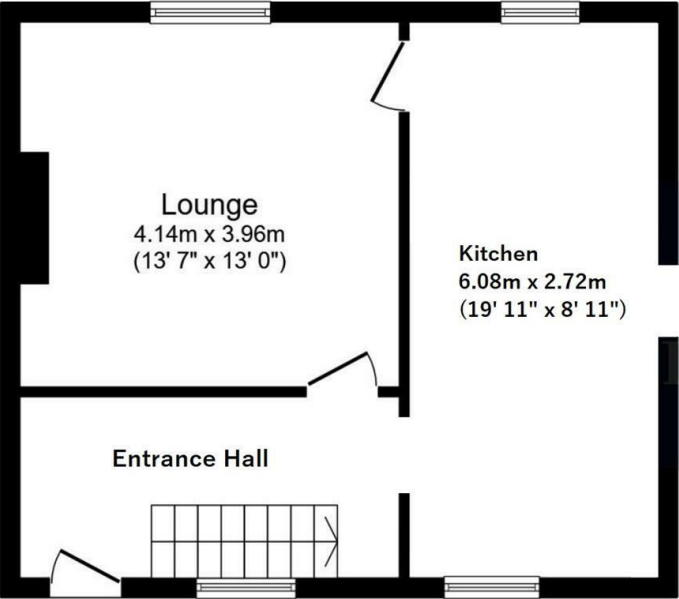
Whilst every care has been taken to ensure the accuracy of these particulars, none of the statements contained herein are to be relied upon as representations of fact. These particulars do not constitute an offer or contract.

Description

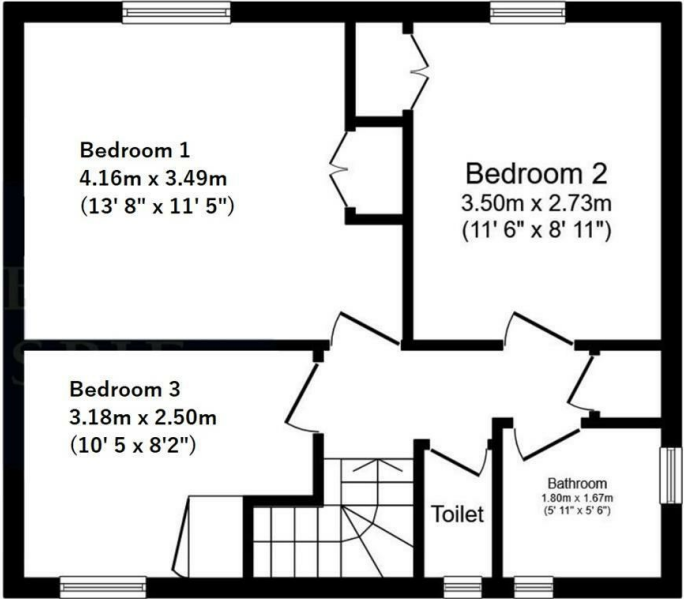
Cameron are pleased to offer this charming 3-bedroom semi-detached house located on the popular Keith Park Road in Uxbridge. This well-presented property offers spacious living throughout, including a bright and airy lounge, a modern kitchen, and a private garden. With three generous bedrooms, ample storage, and off-street parking, this home is perfect for families or professionals. Conveniently situated near local amenities, schools, and transport links, providing easy access to Uxbridge Town Centre and surrounding areas. Presented to the market FURNISHED and available to move-in from MID AUGUST 2025.

IMPORTANT NOTICE

These particulars have been prepared upon information supplied by the Vendor and should be verified by your surveyors and solicitors. In accordance with the Property Misdescriptions Act 1991 we have prepared these sales particulars as a general guide to give a broad description of the property. They are not intended to constitute part of an offer or contract. We have not carried out a structural survey and the services, appliances and specific fittings have not been tested. All photographs, measurements, floor plans and distances referred to are given as a guide only and should not be relied upon for the purchase of carpets or any other fixtures or fittings. Lease details service charge and ground rent (where applicable) are given as a guide only and should be checked and confirmed by your solicitor prior to exchange of contract

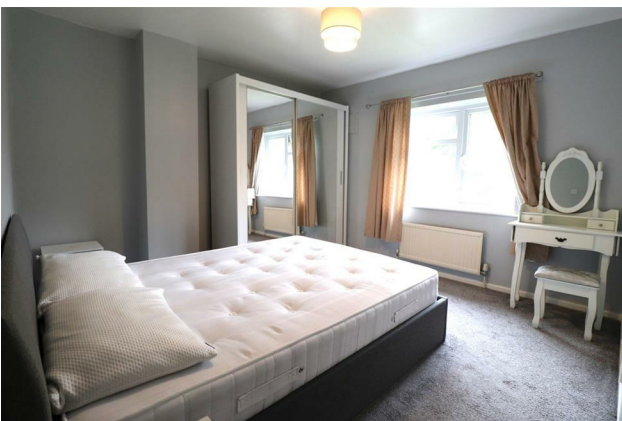
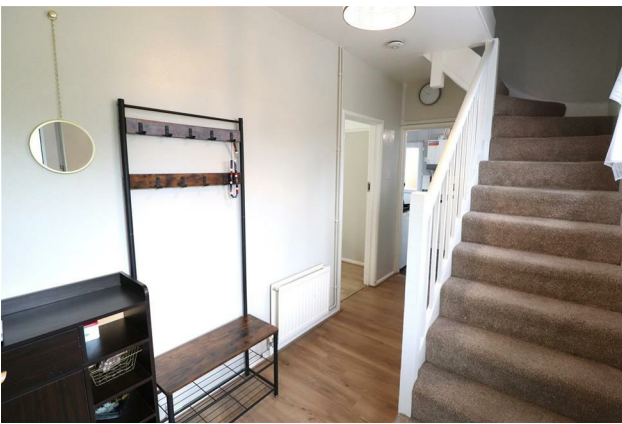


Ground Floor



First Floor

Cameron



Whilst every care has been taken to ensure the accuracy of these particulars, none of the statements contained herein are to be relied upon as representations of fact. These particulars do not constitute an offer or contract.