



Swan House, Homestead Road, Rickmansworth, WD3

- Studio Apartment
- Available Mid/End April 2025
- Modern Development
- Parking Included
- Ideal First Home
- Furnished
- Moments From Train Station
- EPC Rating - D
- Walking Distance From Rickmansworth High Street
- Integrated White Goods

£1,150 PCM



Cameron Estate Agents
195 High Street,
Middlesex, Uxbridge, UB8 1LB

E: uxbridge@cameron.co
T: 01895252000

www.cameron.co

Whilst every care has been taken to ensure the accuracy of these particulars, none of the statements contained herein are to be relied upon as representations of fact. These particulars do not constitute an offer or contract.

Description

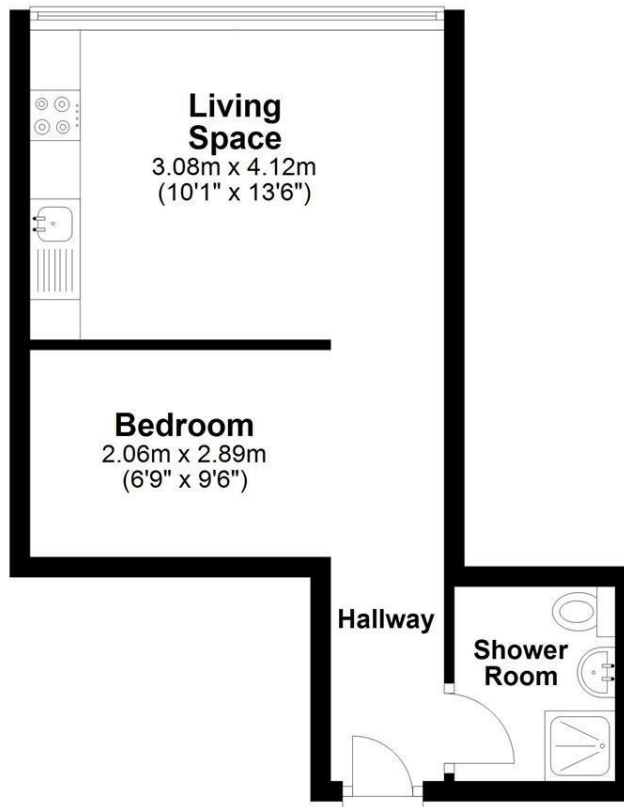
Cameron Estate Agents are delighted to offer this elegantly designed, studio apartment located in the heart of Rickmansworth. Swan House is a highly sought after and exciting collection of high specification apartments perfectly placed for a connected lifestyle. The property offers a fully fitted kitchen including appliances, fitted bathroom and secure parking. Located moments away from Rickmansworth Station which puts you less than 30 minutes away from central London. Furnished and available January 2023.

IMPORTANT NOTICE

These particulars have been prepared upon information supplied by the Vendor and should be verified by your surveyors and solicitors. In accordance with the Property Misdescriptions Act 1991 we have prepared these sales particulars as a general guide to give a broad description of the property. They are not intended to constitute part of an offer or contract. We have not carried out a structural survey and the services, appliances and specific fittings have not been tested. All photographs, measurements, floor plans and distances referred to are given as a guide only and should not be relied upon for the purchase of carpets or any other fixtures or fittings. Lease details service charge and ground rent (where applicable) are given as a guide only and should be checked and confirmed by your solicitor prior to exchange of contract

Ground Floor

Approx. 27.4 sq. metres (295.4 sq. feet)



Total area: approx. 27.4 sq. metres (295.4 sq. feet)

Cameron



Whilst every care has been taken to ensure the accuracy of these particulars, none of the statements contained herein are to be relied upon as representations of fact. These particulars do not constitute an offer or contract.