



Ivinghoe House, 23 Church Road, Cowley, UB8 3NB

- Two Bedrooms
- Furnished
- Students Welcome
- Parking
- Walking Distance To Brunel
- Two Bathrooms
- Available Mid December
- EPC Rating - C
- Amazing Location
- Viewing Recommended

£1,595 PCM



Cameron Estate Agents
195 High Street,
Middlesex, Uxbridge, UB8 1LB

E: uxbridge@cameron.co
T: 01895252000

www.cameron.co

Whilst every care has been taken to ensure the accuracy of these particulars, none of the statements contained herein are to be relied upon as representations of fact. These particulars do not constitute an offer or contract.

Description

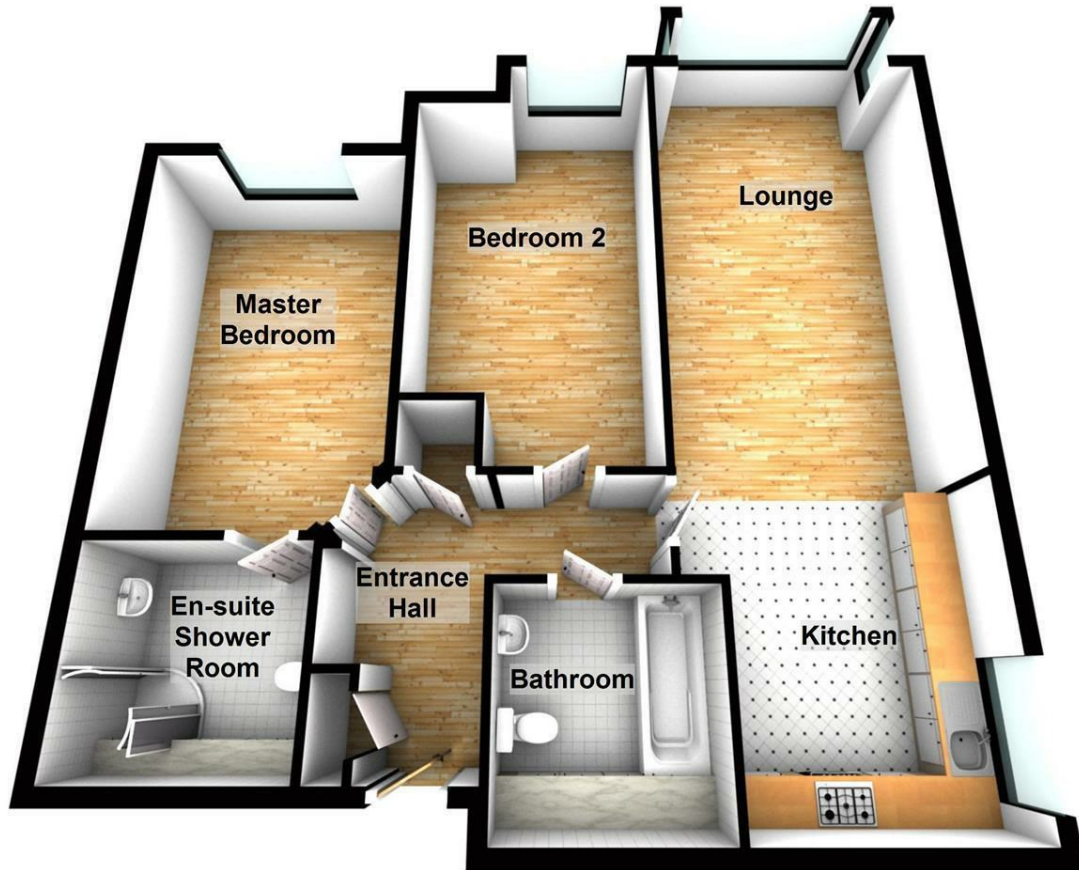
A two bedroom, two bathroom, ground floor apartment built by Howarth Homes to a high specification. The accommodation comprises entrance hall, living room, fitted kitchen, two bedrooms (one en-suite) family bathroom, gas central heating, double glazing, allocated parking space and communal gardens. Situated in a popular residential location close by to Brunel University and is just over one and a half miles from Uxbridge Town Centre with its major shopping complexes and Metropolitan/Piccadilly Line Tube Station. Available mid December and presented furnished. Students welcome.

IMPORTANT NOTICE

These particulars have been prepared upon information supplied by the Vendor and should be verified by your surveyors and solicitors. In accordance with the Property Misdescriptions Act 1991 we have prepared these sales particulars as a general guide to give a broad description of the property. They are not intended to constitute part of an offer or contract. We have not carried out a structural survey and the services, appliances and specific fittings have not been tested. All photographs, measurements, floor plans and distances referred to are given as a guide only and should not be relied upon for the purchase of carpets or any other fixtures or fittings. Lease details service charge and ground rent (where applicable) are given as a guide only and should be checked and confirmed by your solicitor prior to exchange of contract

Ground Floor

Approx. 88.7 sq. metres (955.0 sq. feet)



Total area: approx. 88.7 sq. metres (955.0 sq. feet)

Cameron



Whilst every care has been taken to ensure the accuracy of these particulars, none of the statements contained herein are to be relied upon as representations of fact. These particulars do not constitute an offer or contract.