

Cameron



Jessop Court, 3 Brindley Place, Uxbridge, UB8 2FB

- Studio Apartment
- Underfloor Heating
- Available End Of November 2024
- Ground Floor
- Close To West Drayton Elizabeth Line
- Luxury Development
- Students Welcome
- EPC Rating - B
- Bus Stop Outside Development

£1,250 PCM

arla | propertymark
PROTECTED

naea | propertymark
PROTECTED

Cameron Estate Agents
195 High Street,
Middlesex, Uxbridge, UB8 1LB

E: uxbridge@cameron.co
T: 01895252000

www.cameron.co

Whilst every care has been taken to ensure the accuracy of these particulars, none of the statements contained herein are to be relied upon as representations of fact. These particulars do not constitute an offer or contract.

Residential Sales • Lettings & Property Management • Land & Planning • New Homes

Description

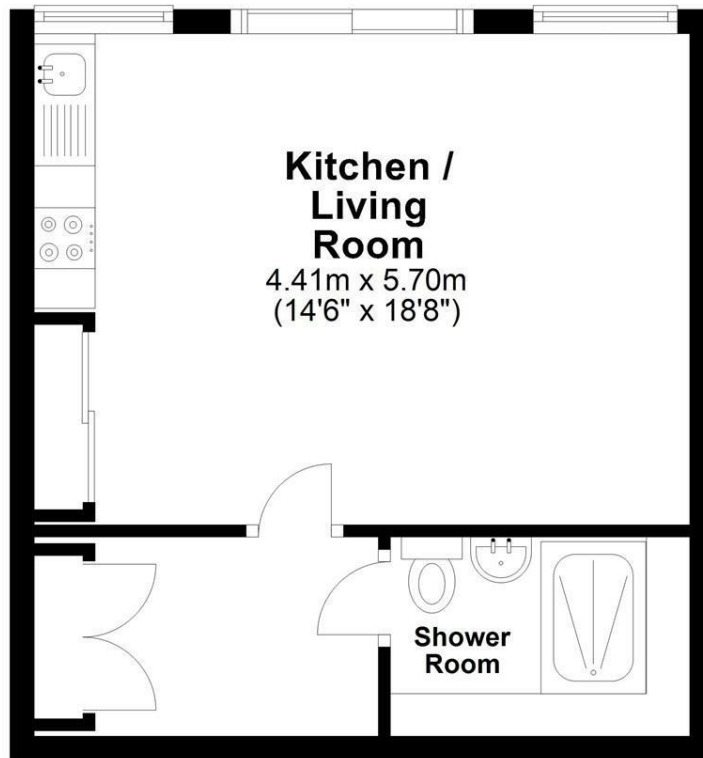
Cameron are delighted to offer this studio apartment located in this impressive development, Jessop Court. A well presented property with space well used, integrated kitchen, under-floor heating, parking, concierge and located walking distance to Brunel University and local transport links. Presented to the market furnished and available end of November 2024.

IMPORTANT NOTICE

These particulars have been prepared upon information supplied by the Vendor and should be verified by your surveyors and solicitors. In accordance with the Property Misdescriptions Act 1991 we have prepared these sales particulars as a general guide to give a broad description of the property. They are not intended to constitute part of an offer or contract. We have not carried out a structural survey and the services, appliances and specific fittings have not been tested. All photographs, measurements, floor plans and distances referred to are given as a guide only and should not be relied upon for the purchase of carpets or any other fixtures or fittings. Lease details service charge and ground rent (where applicable) are given as a guide only and should be checked and confirmed by your solicitor prior to exchange of contract

Ground Floor

Approx. 34.5 sq. metres (371.4 sq. feet)



Total area: approx. 34.5 sq. metres (371.4 sq. feet)

Cameron



Whilst every care has been taken to ensure the accuracy of these particulars, none of the statements contained herein are to be relied upon as representations of fact. These particulars do not constitute an offer or contract.